

WAAS CH 99337 W32A	APP CRS 319°	Rwy Ldg TDZE Apt Elev	5300 3851 3858
--	------------------------	-----------------------------	---

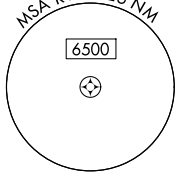
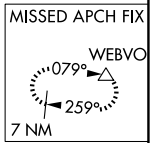
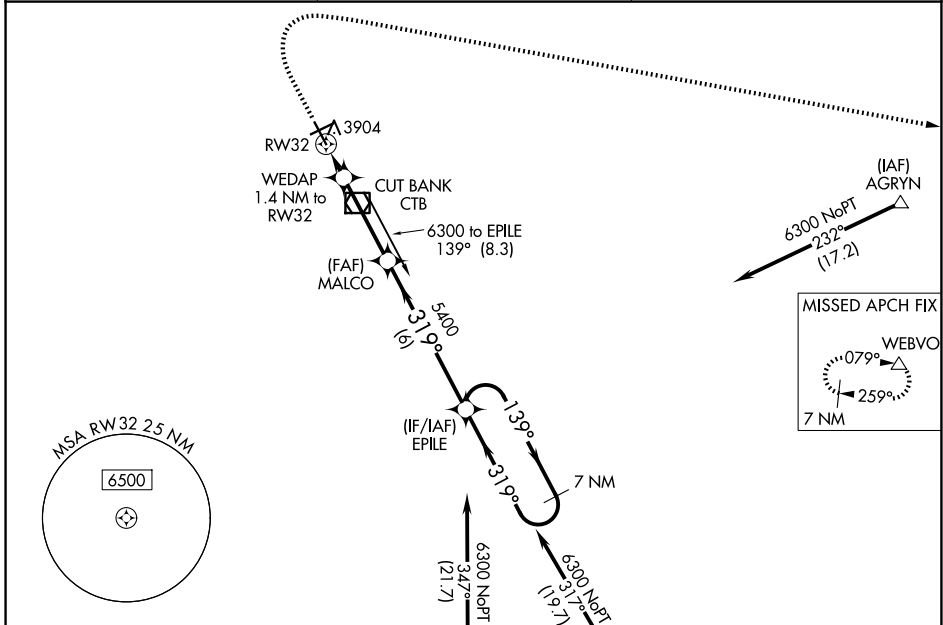
RNAV (GPS) RWY 32

CUT BANK INTL (CTB)

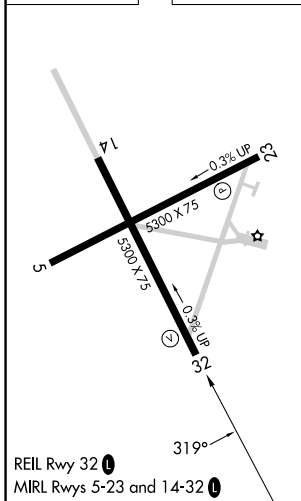
⚠ For uncompensated Baro-VNAV systems, LNAV/VNAV NA below -25°C (-13°F) or above 51°C (124°F).
❄ -28°C DME/DME RNP-0.3 NA.

MISSED APPROACH: Climb to 4400 then climbing right turn to 11000 direct WEBVO and hold.

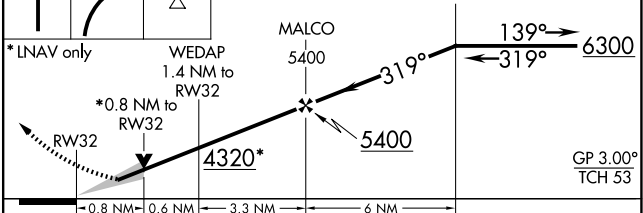
ASOS 119.025	SALT LAKE CITY CENTER 133.4 285.4	UNICOM 123.0 (CTAF) 0
------------------------	---	---------------------------------



ELEV 3858	TDZE 3851
-----------	-----------



4400 11000 WEBVO VGSI and RNAV glidepath not coincident (VGSI Angle 3.00/TCH 42). 7 NM Holding Pattern



CATEGORY	A	B	C	D
LPV DA		4051-1	200 (200-1)	
LNAV/VNAV DA		4101-1	250 (300-1)	
LNAV MDA		4160-1	309 (400-1)	
CIRCLING	4280-1 422 (500-1)	4320-1 462 (500-1)	4400-1½ 542 (600-1½)	4620-2½ 762 (800-2½)

NW-1, 11 JUN 2026 to 09 JUL 2026

NW-1, 11 JUN 2026 to 09 JUL 2026