


WAAS CH <b>63103</b> <b>W35A</b>	APP CRS <b>355°</b>	Rwy Ldg TDZE Apt Elev	<b>7299</b> <b>2885</b> <b>2891</b>
--	------------------------	-----------------------------	---

# RNAV (GPS) RWY 35

GARDEN CITY RGNL (GCK)

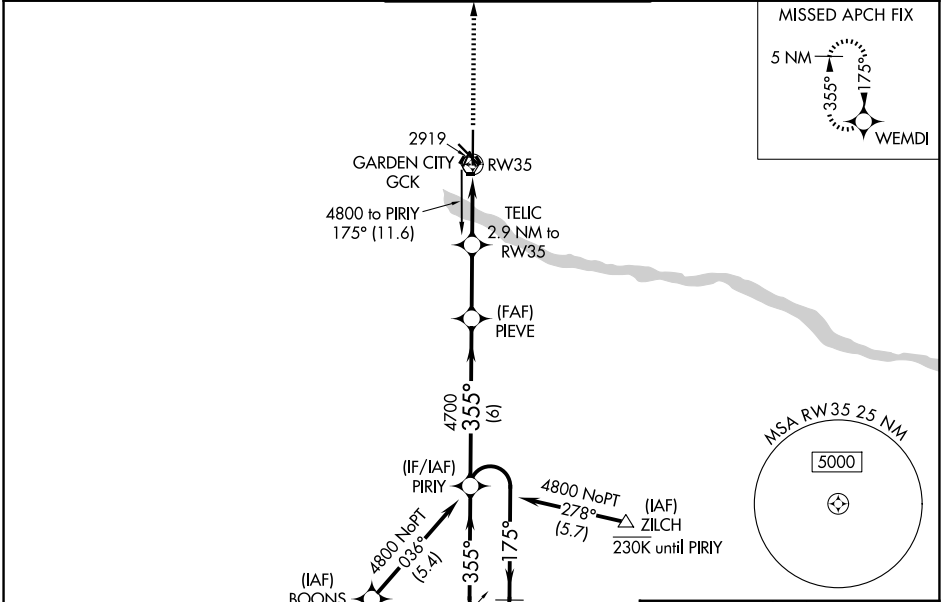
RNP APCH-GPS.

**⚠** For uncompensated Baro-VNAV systems, LNAV/VNAV NA below -20°C or above 54°C. For inop ALS, increase LNAV/VNAV Cats C/D visibility to ¾ SM, and LNAV Cats C/D visibility to ½ SM.

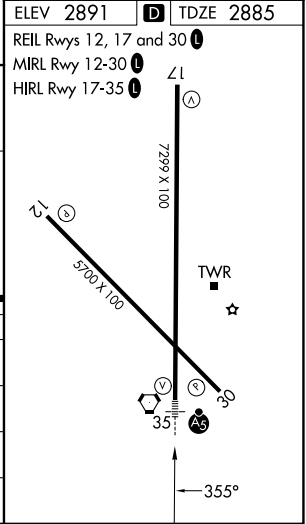
MALSR 

MISSED APPROACH: Climb to 4700 direct WEMDI and hold.

ASOS <b>121.325</b>	KANSAS CITY CENTER <b>125.2 285.425</b>	GARDEN CITY TOWER * <b>118.15 (CTAF) 0 254.4</b>	GND CON <b>119.0 254.4</b>	UNICOM <b>122.95</b>
------------------------	--	---	-------------------------------	-------------------------



5 NM Holding Pattern		VGSI and RNAV glidepath not coincident (VGSI Angle 3.00/TCH 41).		4700	WEMDI
6000	← 175°	PIRY	PIEVE	TELIC	→ RW35
4800	→ 355°		4700	2.9 NM to RW35	0.9 NM to RW35
GP 3.00°			3860		
TCH 59		6 NM	2.6 NM	2 NM	0.9 NM
CATEGORY	A	B	C	D	
LPV DA		3085-½	200 (200-½)		
LNAV/VNAV DA		3135-½	250 (300-½)		
LNAV MDA		3180-½	295 (300-½)		
CIRCLING	3320-1 429 (500-1)	3360-1 469 (500-1)	3480-1½ 589 (600-1½)	3480-2 589 (600-2)	



NC-2, 11 JUN 2026 to 09 JUL 2026

NC-2, 11 JUN 2026 to 09 JUL 2026