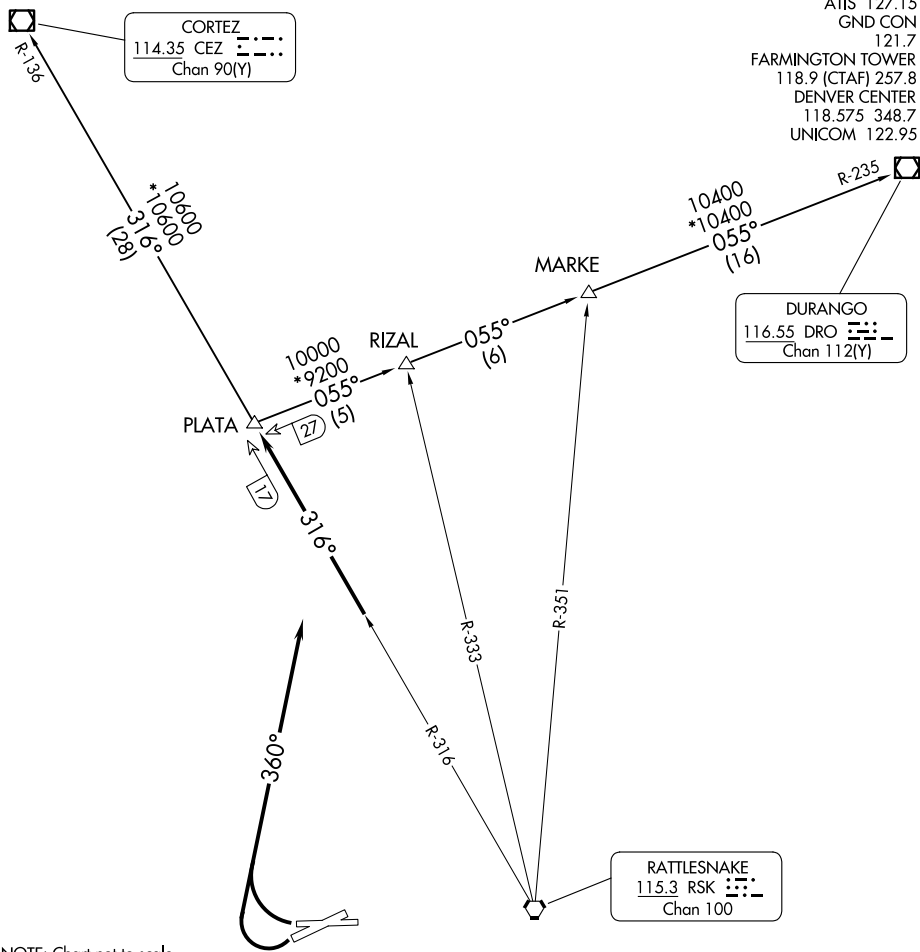


(PLATA1.PLATA) 23334

PLATA ONE DEPARTURE

AL-493 (FAA)

FOUR CORNERS RGNL (F^{MN})
FARMINGTON, NEW MEXICO



ATIS 127.15
 GND CON 121.7
 FARMINGTON TOWER 118.9 (CTAF) 257.8
 DENVER CENTER 118.575 348.7
 UNICOM 122.95

CORTEZ
 114.35 CEZ ---
 Chan 90(Y)

DURANGO
 116.55 DRO ---
 Chan 112(Y)

RATTLESNAKE
 115.3 RSK ---
 Chan 100

NOTE: Chart not to scale.



DEPARTURE ROUTE DESCRIPTION

Aircraft departure Runways 23 and 25 turn right heading 360° to intercept RSK R-316 to PLATA INT. Thence via (transition) or (assigned route).

CORTEZ TRANSITION (PLATA1.CEZ): From over PLATA INT via RSK R-316 and CEZ R-136 to CEZ VOR/DME.

DURANGO TRANSITION (PLATA1.DRO): From over PLATA INT via DRO R-235 to DRO VOR/DME.

MARKE TRANSITION (PLATA1.MARKE): From over PLATA INT via DRO R-235 to MARKE INT.

RIZAL TRANSITION (PLATA1.RIZAL): From over PLATA INT via DRO R-235 to RIZAL INT.

PLATA ONE DEPARTURE

(PLATA1.PLATA) 05DEC96

FARMINGTON, NEW MEXICO
FOUR CORNERS RGNL (F^{MN})

SW-1, 11 JUN 2026 to 09 JUL 2026

SW-1, 11 JUN 2026 to 09 JUL 2026