

WAAS CH 70714 W23A	APP CRS 233°	Rwy Ldg TDZE Apt Elev	5590 5505 5507
--	------------------------	-----------------------------	---

RNAV (GPS) RWY 23

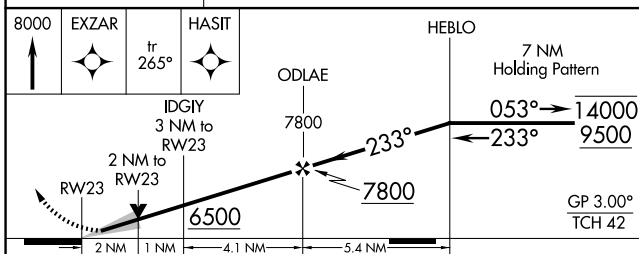
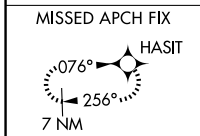
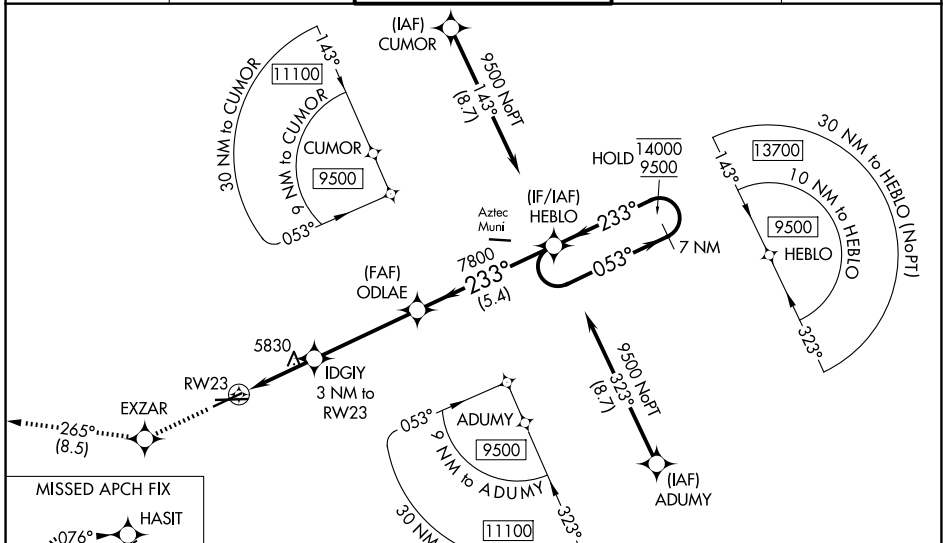
FOUR CORNERS RGNL (FMN)

RNP APCH - GPS.

⚠ Baro-VNAV and VDP NA when using Durango altimeter setting. For uncompensated Baro-VNAV systems, LNAV/VNAV NA below -16°C or above 54°C. Circling NA for Cat D southeast of Rwy 5 and south of Rwy 25. When local altimeter setting not received, use Durango altimeter setting and increase LPV DA to 5998 feet and all visibilities ½ SM. Increase LNAV/VNAV DA to 6274 feet and all visibilities 1 SM. Increase all MDAs 260 feet and LNAV visibilities Cat B ¼ SM, C/D ⅓ SM and Circling visibility Cat A/B ¼ SM and Cat C ½ SM.

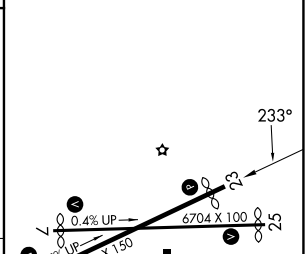
MISSED APPROACH: Climb to 8000 direct EXZAR and on track 265° to HASIT and hold.

ATIS 127.15	DENVER CENTER 118.575 348.7	FARMINGTON TOWER* 118.9 (CTAF) 257.8	GND CON 121.7	UNICOM 122.95
-----------------------	---------------------------------------	--	-------------------------	-------------------------



ELEV 5507	D TDZE 5505
-----------	--------------------

CATEGORY	A	B	C	D
LPV DA		5755-¾	250 (300-¾)	
LNAV/VNAV DA		6031-1½	526 (600-1½)	
LNAV MDA	6080-1	575 (600-1)	6080-1½	575 (600-1½)
CIRCLING	6100-1 593 (600-1)	6140-1 633 (700-1)	6380-2½ 873 (900-2½)	6400-3 893 (900-3)



REIL Rws 23 and 25 **Ⓛ**
MIRL Rws 5-23 and 7-25 **Ⓛ**

SW-1, 11 JUN 2026 to 09 JUL 2026

SW-1, 11 JUN 2026 to 09 JUL 2026