

VORTAC RSK 115.3 Chan 100	APP CRS 252°	Rwy Ldg TDZE Apt Elev 6248 5507 5507
---	------------------------	--

VOR RWY 25

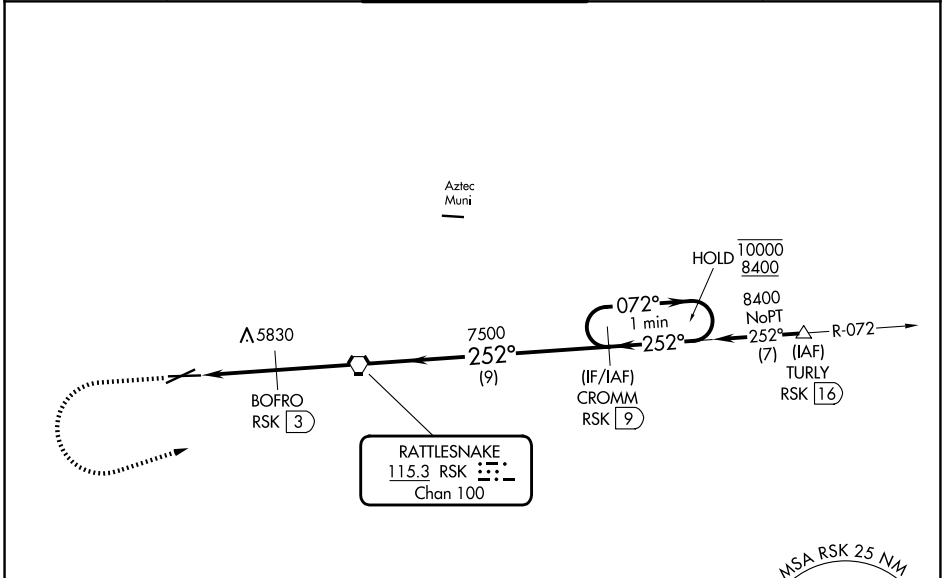
FOUR CORNERS RGNL (FMN)

DME required.

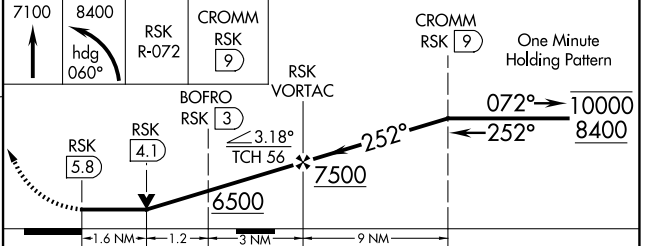
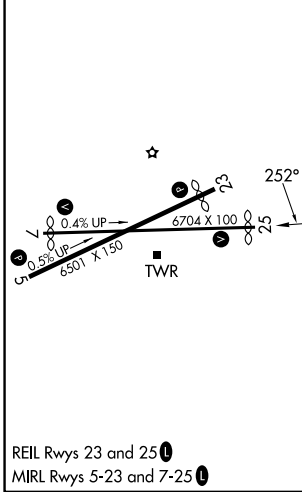
⚠ VDP NA when using Durango-La Plata County altimeter setting. Circling NA for Cat D southeast of Rwy 5 and south of Rwy 25. When local altimeter setting not received, use Durango-La Plata County altimeter setting and increase all MDAs 260 feet; increase S-25 visibility Cat B/C/D 7/8 SM and Circling visibility Cat A/B/C 1/2 SM.

MISSED APPROACH: Climb to 7100 then climbing left turn to 8400 on heading 060° and on RSK VORTAC R-072 to CROMM/9 DME and hold.

ATIS 127.15	DENVER CENTER 118.575 348.7	FARMINGTON TOWER★ 118.9 (CTAF) 0 257.8	GND CON 121.7	UNICOM 122.95
-----------------------	---------------------------------------	--	-------------------------	-------------------------



ELEV 5507	D	TDZE 5507
-----------	----------	-----------



CATEGORY	A	B	C	D
S-25	6080-1	573 (600-1)	6080-1½	573 (600-1½)
CIRCLING	6080-1 573 (600-1)	6140-1 633 (700-1)	6380-2½ 873 (900-2½)	6460-3 953 (1000-3)

SW-1, 11 JUN 2026 to 09 JUL 2026

SW-1, 11 JUN 2026 to 09 JUL 2026