

VORTAC RSK 115.3 Chan 100	APP CRS 072°	Rwy Ldg TDZE 5502 Apt Elev 5507
---	------------------------	---

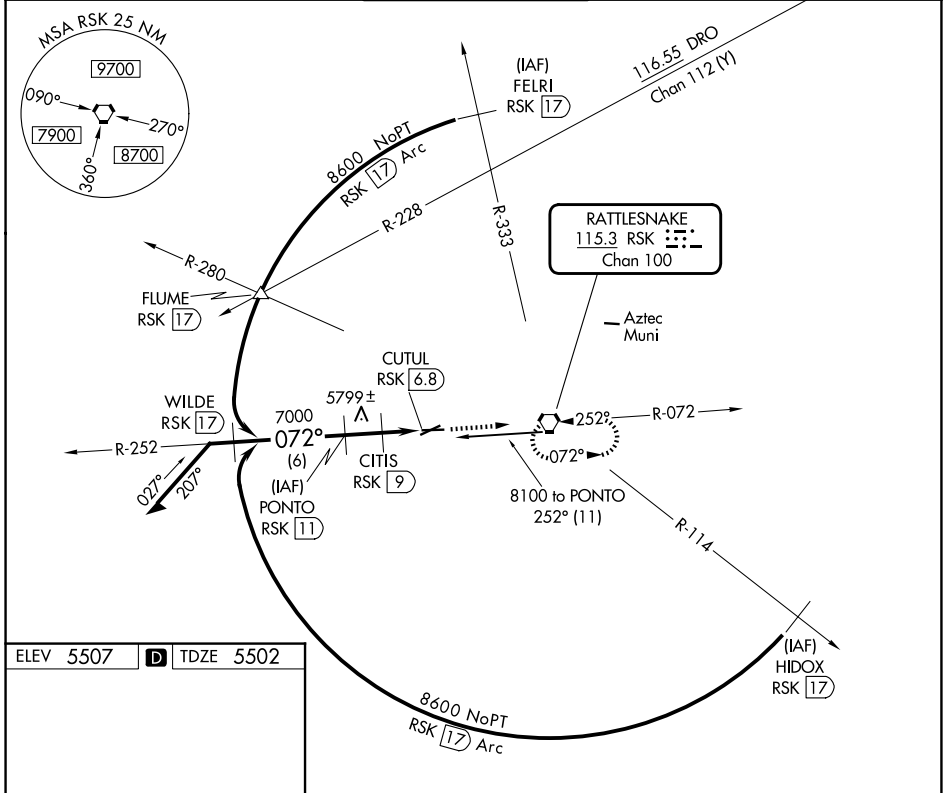
VOR/DME RWY 7

FOUR CORNERS RGNL (FMN)

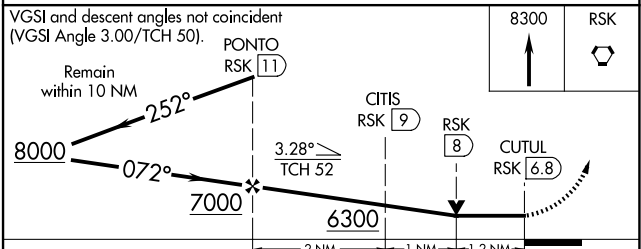
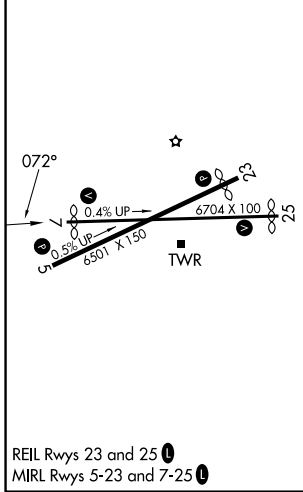
⚠ Circling NA for Cat D southeast of Rwy 5 and south of Rwy 25. VDP NA when using Durango altimeter setting. When local altimeter not received, use Durango altimeter setting and increase all MDAs 260 feet and visibility S-7 Cat C/D and Circling Cats A/B/C ¾ SM.

MISSED APPROACH: Climb to 8300 direct RSK VORTAC and hold.

ATIS 127.15	DENVER CENTER 118.575 348.7	FARMINGTON TOWER★ 118.9 (CTAF) 0 257.8	GND CON 121.7	UNICOM 122.95
-----------------------	---------------------------------------	---	-------------------------	-------------------------



ELEV 5507	D	TDZE 5502
-----------	----------	-----------



CATEGORY	A	B	C	D
S-7	5920-1	418 (500-1)	5920-1½	418 (500-1½)
CIRCLING	6100-1 593 (600-1)	6180-1 673 (700-1)	6380-2½ 873 (900-2½)	6460-3 953 (1000-3)

SW-1, 11 JUN 2026 to 09 JUL 2026

SW-1, 11 JUN 2026 to 09 JUL 2026