

KNOB NOSTER, MISSOURI

# HI-ILS or LOC Z RWY 1

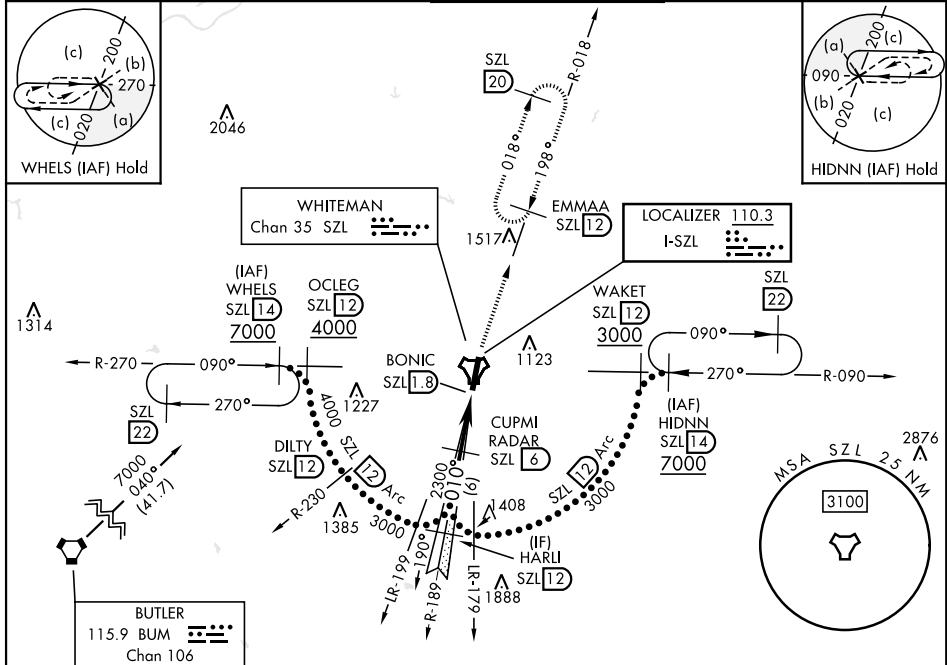
LOC I-SZL <b>110.3</b>	APCH CRS <b>010°</b>	Rwy Idg <b>12,400</b> TDZE <b>837</b> Arprt Elev <b>871</b>	[USAF]	WHITEMAN AFB (KSZL)
---------------------------	-------------------------	---	--------	---------------------

RADAR or DME required.

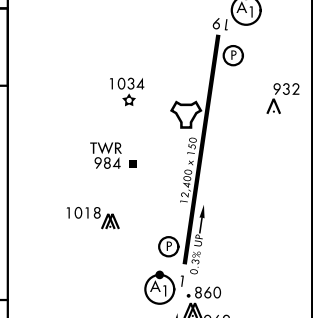
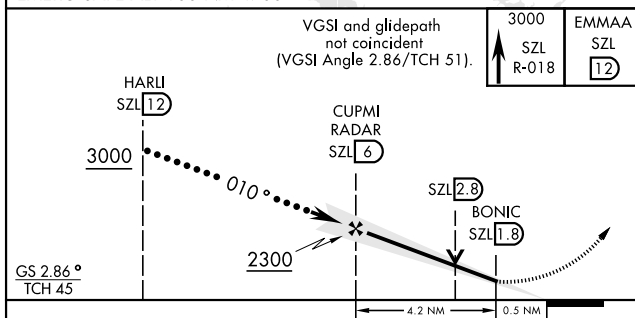
ALSF-1  
A1

MISSED APPROACH: Climb to 3000 via SZL TACAN R-018 to EMMAA and hold.

ATIS ★ <b>118.725 239.025</b>	APP CON ★ <b>127.45 284.0</b>	TOWER ★ <b>132.4 318.8</b>	GND CON ★ <b>119.125 275.8</b>	ASR
----------------------------------	----------------------------------	-------------------------------	-----------------------------------	-----



EMERG SAFE ALT 100 NM 4700	ELEV 871	TDZE 837
----------------------------	----------	----------



CATEGORY	C		D	E	HIRL Rwy 1-19
	1037/24	1340/55	503	(500-1)	
S-ILS 1*	1037/24		200	(200-½)	FAF to MAP 4.2 NM Knots: 120 140 160 180 200 Min:Sec: 2:06 1:48 1:35 1:24 1:16
S-LOC 1**	1340-1½		1440-2	1460-2	
CIRCLING***	469 (500-1½)	569 (600-2)	589 (600-2)		

KNOB NOSTER, MISSOURI 38°44'N-93°33'W WHITEMAN AFB (KSZL)

# HI-ILS or LOC Z RWY 1

NC-3, 11 JUN 2026 to 09 JUL 2026

NC-3, 11 JUN 2026 to 09 JUL 2026

