

KNOB NOSTER, MISSOURI

ILS or LOC Y RWY 1

LOC I-SZL 110.3	APCH CRS 010°	Rwy ldg TDZE Arprt Elev	12,400 837 871
---------------------------	-------------------------	-------------------------------	---

(USAF)

WHITEMAN AFB (KSZL)

RADAR or DME required

ALSF-1

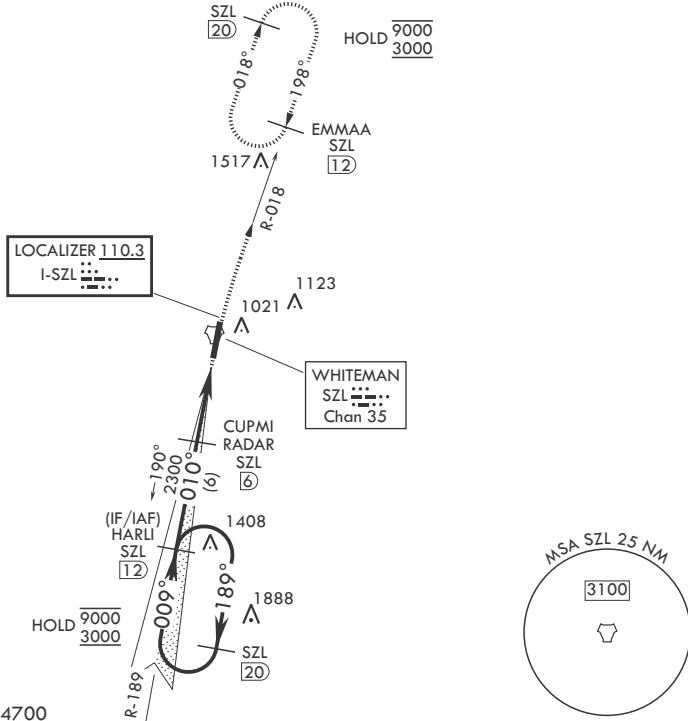
MISSED APPROACH: Climb to 3000 via SZL TACAN R-018 to EMMAA and hold.

- ▼ * When ALS inop, increase CAT ABCDE RVR to 40, vis to 3/4 mile.
- ** When ALS inop, increase CAT AB RVR to 55, vis to 1 mile; CAT CDE vis to 1 3/8 miles.
- *** Circling not authorized W of Rwy 1-19.

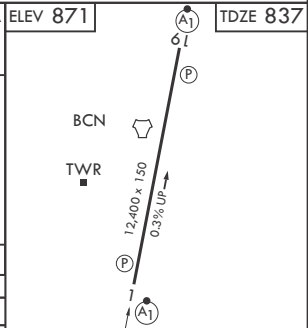
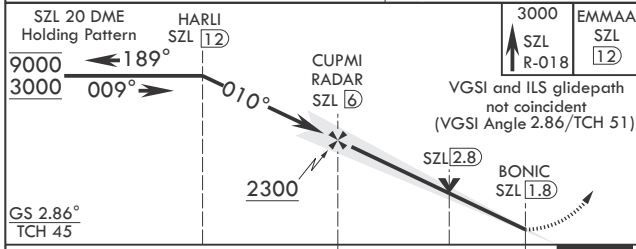


ATIS★ 118.725 239.025	APP CON★ 127.45 284.0	TOWER★ 132.4 318.8	GND CON★ 119.125 275.8	ASR
---------------------------------	---------------------------------	------------------------------	----------------------------------	-----

*** Circling not authorized W of Rwy 1-19.



EMERG SAFE ALT 100 NM 4700



CATEGORY	A	B	C	D	E
S-ILS 1*	1037/24		200	(200-½)	
S-LOC 1**	1340/24	503 (500-½)	1340/55	503	(500-1)
CIRCLING***	1340-1	469 (500-1)	1340-1½ 469 (500-1½)	1440-2 569 (600-2)	1460-2 589 (600-2)

FAF to MAP 4.2 NM					
Knots	60	90	120	150	180
Min:Sec	4:12	2:48	2:06	1:41	1:24

KNOB NOSTER, MISSOURI

38°44'N - 93°33'W

WHITEMAN AFB (KSZL)

Amdt 2 25DEC25

ILS or LOC Y RWY 1

NC-3, 11 JUN 2026 to 09 JUL 2026

NC-3, 11 JUN 2026 to 09 JUL 2026