

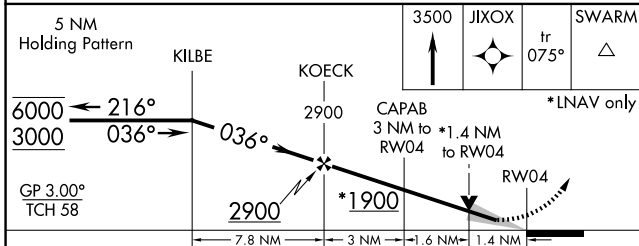
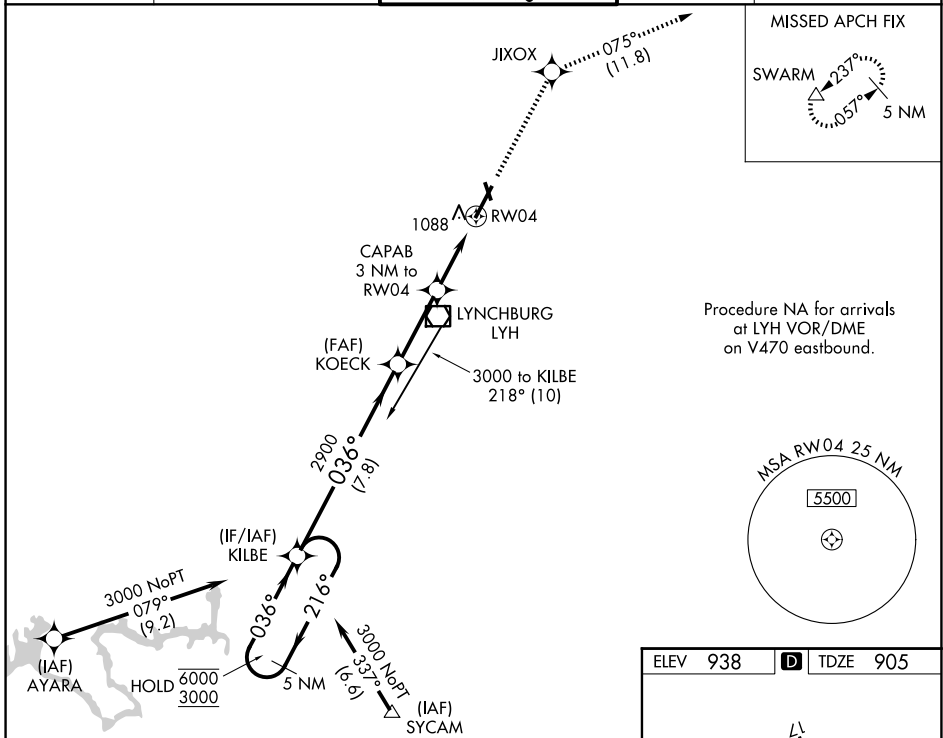
WAAS CH 58205 W04A	APP CRS 036°	Rwy Ldg TDZE Apt Elev	6800 905 938
--	------------------------	-----------------------------	---

RNAV (GPS) RWY 4

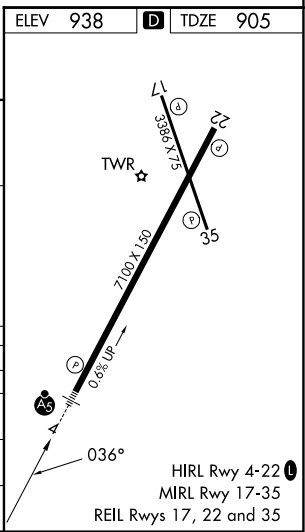
LYNCHBURG RGNL/PRESTON GLENN FLD (LYH)

RNP APCH.	MALSR	MISSED APPROACH: Climb to 3500 direct JIXOX and track 075° to SWARM and hold.
⚠ For uncompensated Baro-VNAV systems, LNAV/VNAV NA below -16°C or above 47°C. For inop ALS, increase LNAV Cat A and B visibility to RVR 5000. ⚠ Circling Rwy 17 NA at night.		

ATIS 119.8	ROANOKE APP CON 135.0 254.325	LYNCHBURG TOWER ★ 127.65 (CTAF) 0 257.8	GND CON 121.9	UNICOM 122.95
----------------------	---	---	-------------------------	-------------------------



ELEV 938	TDZE 905
3500 JIXOX SWARM ↑ ⬠ tr 075° △	
*LNAV only	
CATEGORY	A B C D
LPV DA	1175/40 270 (300-¾)
LNAV/VNAV DA	1394/60 489 (500-1½)
LNAV MDA	1400/40 495 (500-¾) 1400/50 495 (500-1)
CIRCLING	1660-1 1780-1¼ 1800-2½ 1800-2¾ 722 (800-1) 842 (900-1¼) 862 (900-2½) 862 (900-2¾)



NE-3, 11 JUN 2026 to 09 JUL 2026

NE-3, 11 JUN 2026 to 09 JUL 2026

RNAV (GPS) RWY 4