

APP CRS	Rwy Ldg	4205
183°	TDZE	1082
	Apt Elev	1084

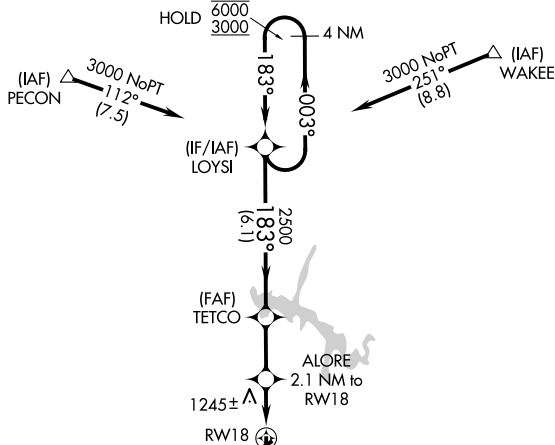
RNAV (GPS) RWY 18

TULLAHOMA RGNL/WM NORTHERN FLD (THA)

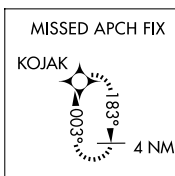
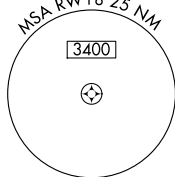
RNP APCH - GPS.		MISSED APPROACH: Climb to 3400 direct KOJAK and hold.
⚠	Rwy 18 helicopter visibility reduction below 1 SM NA. Circling NA to Rwys 9 and 27. ⚠ Straight-in Rwy 18 NA at night, Circling Rwy 18, 36 NA at night.	

AWOS-3 128.325	MEMPHIS CENTER 128.15 323.125	UNICOM 123.0 (CTAF) 📻
--------------------------	---	--

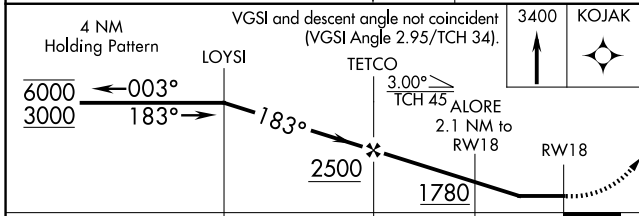
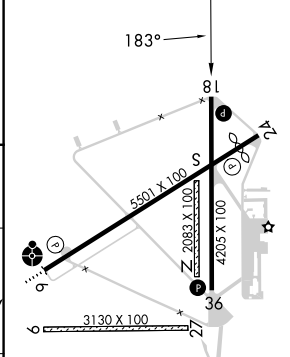
Procedure NA for arrivals at PECON on V321 southwest bound.



Procedure NA for arrivals at WAKEE on V16 eastbound.



ELEV 1084	TDZE 1082
-----------	-----------



CATEGORY	A	B	C	D
LNVA MDA	1500-1	418 (500-1)	1500-1 $\frac{1}{8}$	418 (500-1 $\frac{1}{8}$)
CIRCLING	1540-1 456 (500-1)	1580-1 496 (500-1)	1620-1 $\frac{1}{2}$ 536 (600-1 $\frac{1}{2}$)	1640-2 556 (600-2)

MIRL Rws 6-24 and 18-36 **📻**
REIL Rws 6, 18, 24 and 36

SE-1, 11 JUN 2026 to 09 JUL 2026

SE-1, 11 JUN 2026 to 09 JUL 2026