

LOC/DME I-LEI 108.5 Chan 22	APP CRS 234°	Rwy Ldg 7500 TDZE 435 Apt Elev 435
---	------------------------	---

ILS or LOC RWY 23L

RALEIGH-DURHAM INTL (RDU)

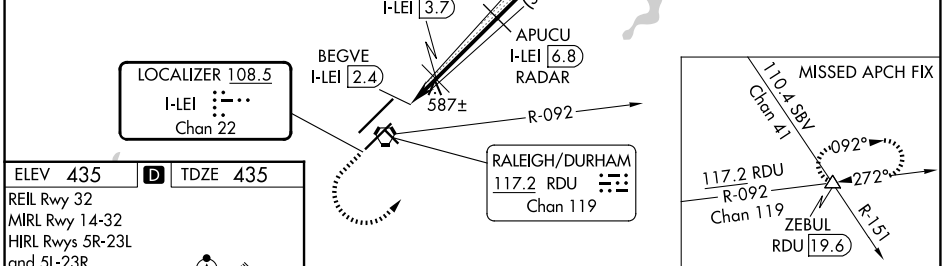
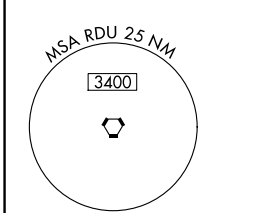
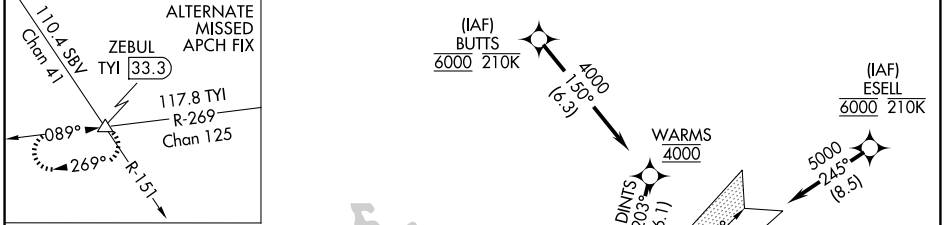
RNAV 1-DME/DME/IRU or GPS or RADAR required for procedure entry.
DME required for LOC only.

⚠ Simultaneous approach authorized. For inop ALS, increase S-ILS 23L all Cats visibility to RVR 5500. Localizer unusable for coupled approaches below 1100 or within 2 NM of threshold.

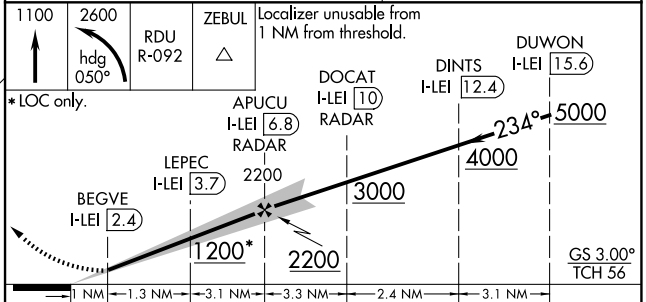
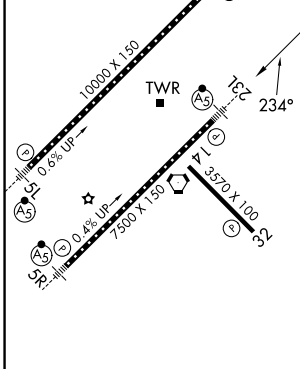


MISSED APPROACH: Climb to 1100 then climbing left turn to 2600 on heading 050° and RDU VORTAC R-092 to ZEBUL INT and hold.

D-ATIS 123.8	RALEIGH APP CON 127.675 307.9	RALEIGH TOWER 127.45 257.8	GND CON 121.9 348.6	CLNC DEL 120.1	CPDLC
------------------------	---	---	-------------------------------	--------------------------	-------



ELEV 435	D	TDZE 435
REIL Rwy 32		
MIRL Rwy 14-32		
HIRL Rwys 5R-23L and 5L-23R		
TDZ/CL Rwys 23R, 23L and 5L		



CATEGORY	A	B	C	D
S-ILS 23L		806/35	371 (400- ⁵ / ₈)	
S-LOC 23L		840/40	405 (500- ³ / ₄)	
CIRCLING	960-1 ¹ / ₄	525 (600-1 ¹ / ₄)	1020-1 ¹ / ₂ 585 (600-1 ¹ / ₂)	1180-2 ¹ / ₂ 745 (800-2 ¹ / ₂)

SE-2, 11 JUN 2026 to 09 JUL 2026

SE-2, 11 JUN 2026 to 09 JUL 2026