

APP CRS	Rwy Ldg	7500
234°	TDZE	435
	Apt Elev	435

RNAV (RNP) Z RWY 23L

RALEIGH-DURHAM INTL (RDU)

RNP AR APCH-GPS.

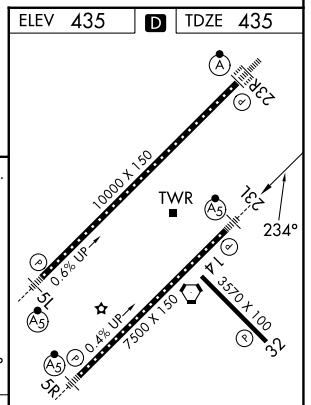
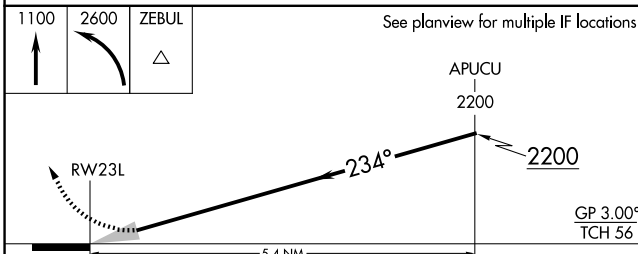
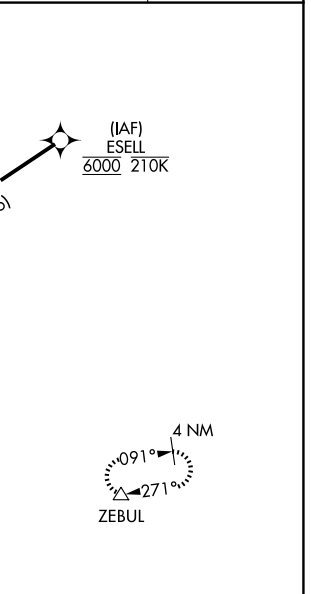
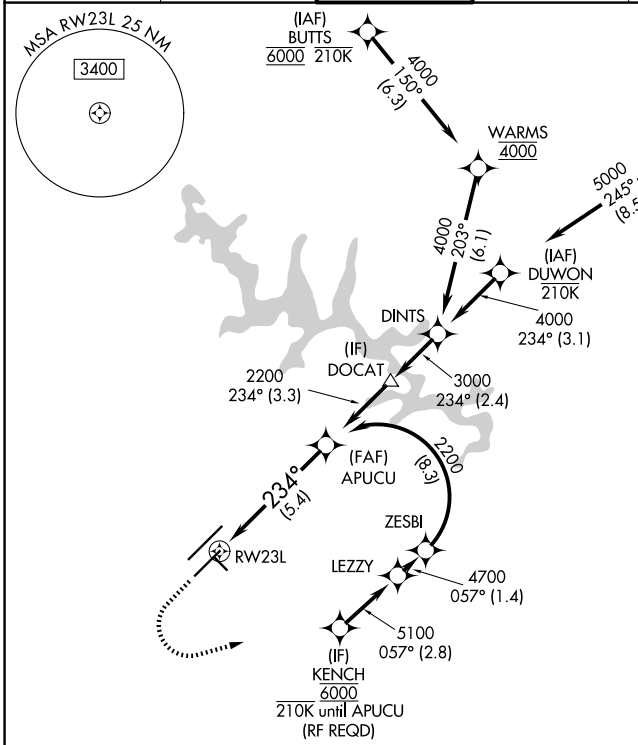
▼ For uncompensated Baro-VNAV systems, procedure NA below -12°C or above 54°C. Simultaneous approach authorized, except for arrivals at KENCH. For inop ALS, increase RNP 0.10 all Cats visibility to RVR 5500.

MALSR



MISSED APPROACH: Climb to 1100 then climbing left turn to 2600 direct ZEBUL and hold.

D-ATIS 123.8	RALEIGH APP CON 127.675 307.9	RALEIGH TOWER 127.45 257.8	GND CON 121.9 348.6	CLNC DEL 120.1	CPDLC
------------------------	---	--------------------------------------	-------------------------------	--------------------------	-------



CATEGORY	A	B	C	D
RNP 0.10 DA		776/30	341 (400-%)	
RNP 0.30 DA		826/35	391 (400-%)	

AUTHORIZATION REQUIRED

REIL Rwy 32
MIRL Rwy 14-32
HIRL Rwys 5R-23L and 5L-23R
TDZ/CL Rwys 5L, 23L, and 23R

SE-2, 11 JUN 2026 to 09 JUL 2026

SE-2, 11 JUN 2026 to 09 JUL 2026