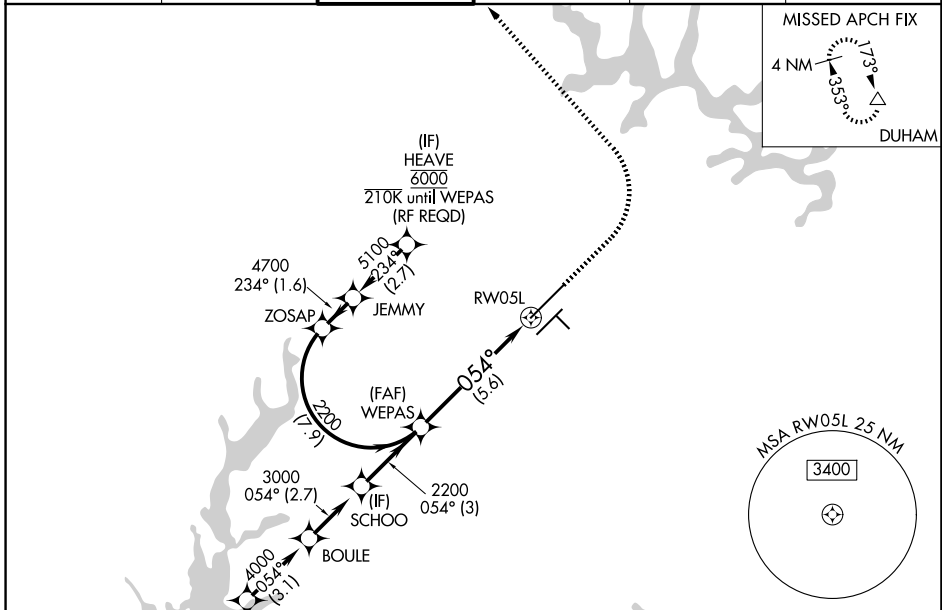


| | |
|------------------------|--|
| APP CRS 054° | Rwy Ldg 10000 TDZE 384 Apt Elev 435 |
|------------------------|--|

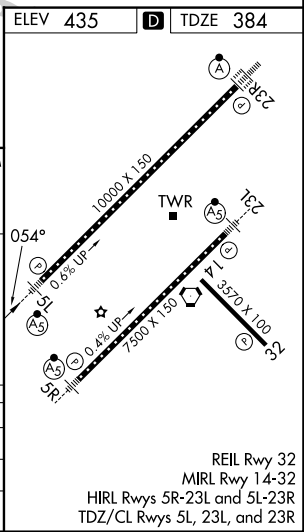
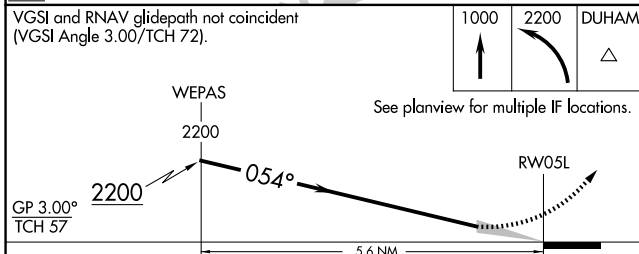
RNAV (RNP) Z RWY 5L

RALEIGH-DURHAM INTL (RDU)

| | | | | | |
|---|---|--------------------------------------|-------------------------------|--|-------|
| RNP AR APCH-GPS. | | | MALSR | MISSED APPROACH: Climb to 1000 then climbing left turn to 2200 direct DUHAM and hold. | |
| ▼ For uncompensated Baro-VNAV systems, procedure NA below -12°C or above 54°C. Simultaneous approach authorized, except for arrivals at HEAVE. For inop ALS, increase RNP 0.10 all Cats visibility to RVR 4500. | | | | | |
| D-ATIS 123.8 | RALEIGH APP CON 127.675 307.9 | RALEIGH TOWER 127.45 257.8 | GND CON 121.9 348.6 | CLNC DEL 120.1 | CPDLC |



(IAF) OTTOS 6000 210K
 VGSi and RNAV glidepath not coincident (VGSi Angle 3.00/TCH 72).
 1000 2200 DUHAM
 See planview for multiple IF locations.



| CATEGORY | A | B | C | D |
|-------------|---|--------|---------------|---|
| RNP 0.10 DA | | 684/24 | 300 (300-1/2) | |
| RNP 0.30 DA | | 780/35 | 396 (400-5/8) | |

AUTHORIZATION REQUIRED

SE-2, 11 JUN 2026 to 09 JUL 2026

SE-2, 11 JUN 2026 to 09 JUL 2026