

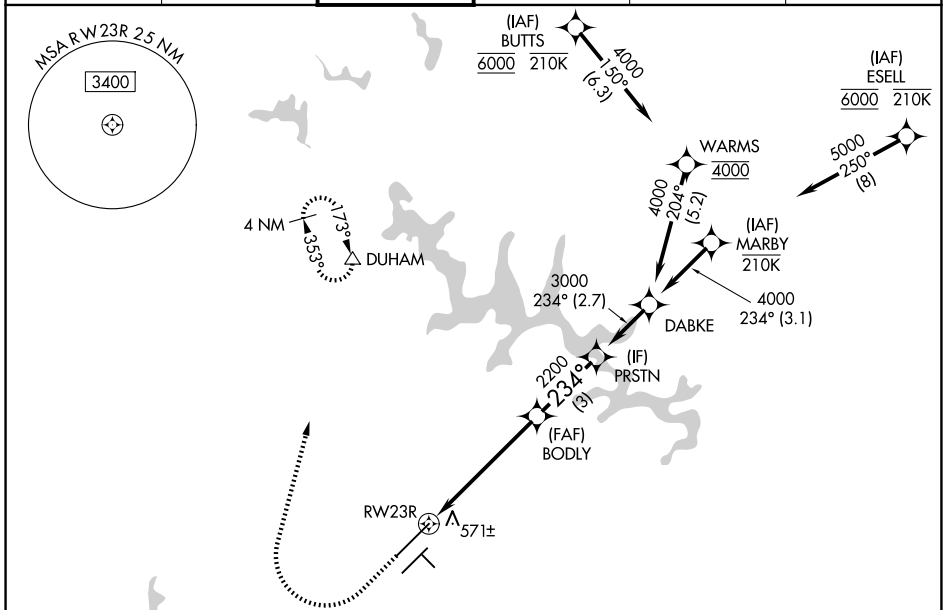
WAAS CH 45613 W23A	APP CRS 234°	Rwy Ldg 10000 TDZE 409 Apt Elev 435
--	------------------------	--

RNAV (GPS) Y RWY 23R

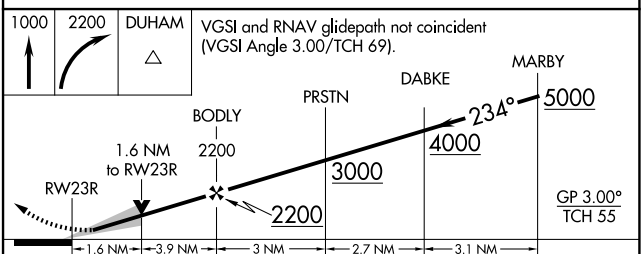
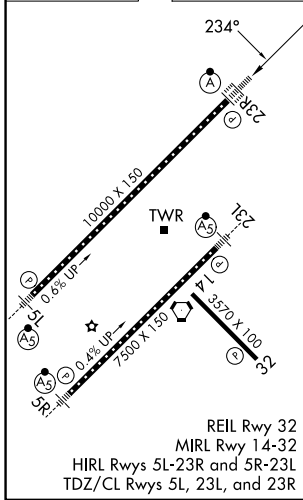
RALEIGH-DURHAM INTL (RDU)

RNP APCH - GPS		ALSF-2	MISSED APPROACH: Climb to 1000 then climbing right turn to 2200 direct DUHAM and hold.
Simultaneous approach authorized. LNAV procedure NA during simultaneous operations. Use of FD or AP providing RNAV track guidance required during simultaneous operations. For uncompensated Baro-VNAV systems, LNAV/VNAV NA below -12°C or above 54°C. For inop ALS, increase LNAV/VNAV all Cats visibility to RVR 6000 and LNAV Cat C/D visibility to 1½ NM.			

D-ATIS 123.8	RALEIGH APP CON 127.675 307.9	RALEIGH TOWER 127.45 257.8	GND CON 121.9 348.6	CLNC DEL 120.1	CPDLC
------------------------	---	---	-------------------------------	--------------------------	-------



ELEV 435	D	TDZE 409
-----------------	----------	-----------------



	A	B	C	D
LPV DA	DA	609/18	200 (200-½)	
LNAV/VNAV DA	DA	826/40	417 (400-¾)	
LNAV MDA	980/24	571 (600-½)	980-1¼	571 (600-1¼)
CIRCLING	980-1	545 (600-1)	1020-1½ 585 (600-1½)	1180-2½ 745 (800-2½)

SE-2, 11 JUN 2026 to 09 JUL 2026

SE-2, 11 JUN 2026 to 09 JUL 2026