

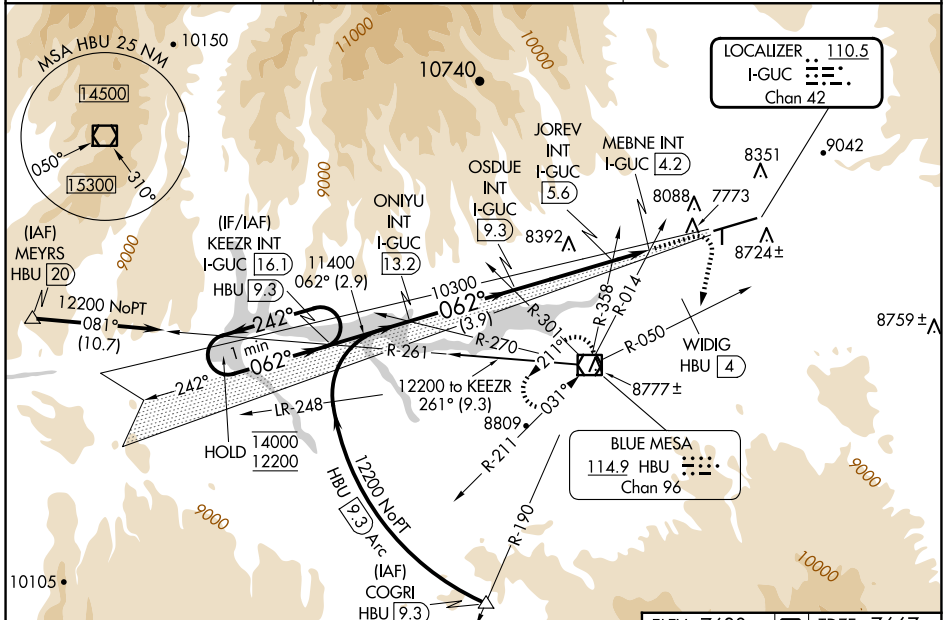
LOC/DME I-GUC <b>110.5</b> Chan <b>42</b>	APP CRS <b>062°</b>	Rwy Ldg TDZE <b>9400</b> <b>7667</b> Apt Elev <b>7680</b>
---	------------------------	---

# ILS or LOC RWY 6

GUNNISON-CRESTED BUTTE RGNL (GUC)

DME required.	MALSF	MISSED APPROACH: Climb to 10000 then climbing right turn to 12000 on heading 180° and HBU VOR/DME R-050 to WIDIG/HBU 4. DME continue on HBU VOR/DME R-050 to HBU VOR/DME and hold.
<p>▼ Rwy 6 helicopter visibility reduction below 3/4 SM NA. Inop table does not apply. Procedure NA when airport closed except by prior arrangement.</p> <p>⚠ -25°C Circling NA to Rwy's 17 and 35.</p>		

AWOS-3PT <b>135.075</b>	DENVER CENTER <b>124.5 350.25</b>	UNICOM <b>122.7 (CTAF)</b>
----------------------------	--------------------------------------	-------------------------------



<p>One Minute Holding Pattern</p> <p>14000 ← 242°</p> <p>12200 062° →</p> <p>GS 3.20° TCH 49</p>	<p>KEZZR INT I-GUC 16.1</p> <p>ONIYU INT I-GUC 13.2</p> <p>OSDUE INT I-GUC 9.3</p> <p>JOREV INT I-GUC 5.6</p> <p>MEBNE INT I-GUC 4.2</p>	<p>10000</p> <p>12000</p> <p>hdg 180°</p>	<p>HBU R-050</p> <p>WIDIG HBU 4</p> <p>HBU R-050</p>	<p>HBU</p>
CATEGORY	A	B	C	D
S-ILS 6	8698-3 1031 (1100-3)			NA
S-LOC 6	9020-3 1353 (1400-3)			
CIRCLING	9260-3 1580 (1600-3)	9540-3 1860 (1900-3)		10040-3 2360 (2400-3)
JOREV FIX MINIMUMS				
S-LOC 6	8640-3 973 (1000-3)			
CIRCLING	9260-3 1580 (1600-3)	9540-3 1860 (1900-3)		10040-3 2360 (2400-3)

ELEV 7680	TDZE 7667
<p>HIRL Rwy 6-24</p> <p>REIL Rwy 24</p> <p>FAF to MAP 5.1 NM</p>	
Knots	60 90 120 150 180
Min:Sec	5:06 3:24 2:33 2:02 1:42

SW-1, 11 JUN 2026 to 09 JUL 2026

SW-1, 11 JUN 2026 to 09 JUL 2026