

APP CRS	Rwy Ldg	9400
242°	TDZE	7680
	Apt Elev	7680

RNAV (RNP) RWY 24

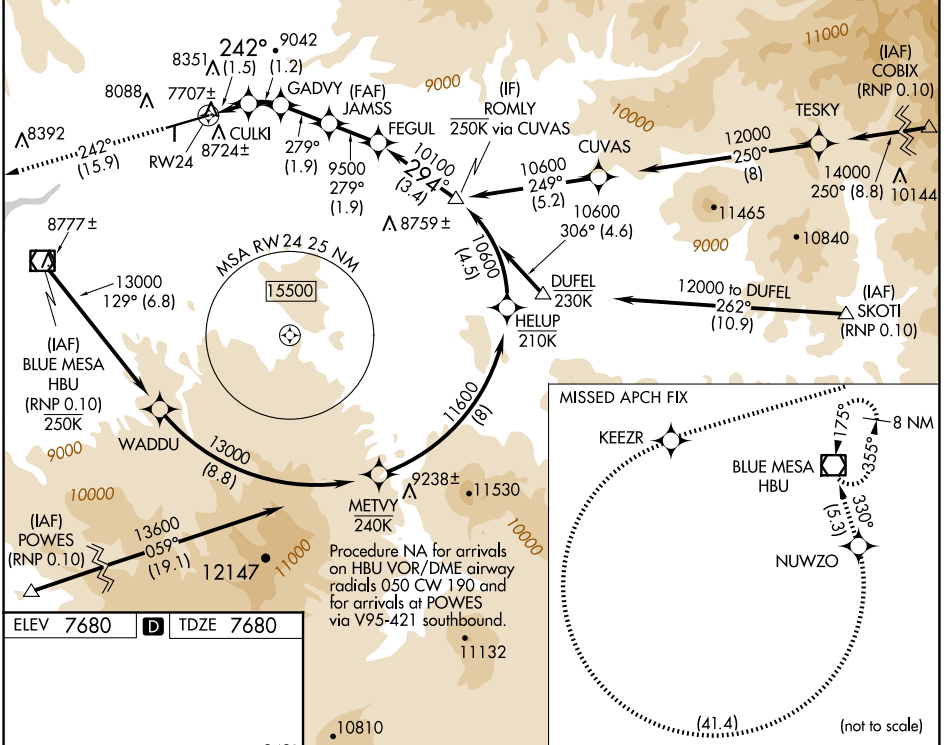
GUNNISON-CRESTED BUTTE RGNL (GUC)

RNP AR APCH - GPS, RF, min RNP 0.10. Authorization required.

▼ When local altimeter setting not received, procedure NA.
❄ -25°C Procedure NA for aircraft with wingspan greater than 136 feet. For uncompensated Baro-VNAV systems, procedure NA below -29°C or above 24°C.

MISSED APPROACH: Climb to 14000 on track 242° to KEEZR, and left turn to NUWZO, and on track 330° to HBU VOR/DME and hold.
 Missed approach requires minimum climb of 425 feet per NM to 9000.

AWOS-3PT 135.075	DENVER CENTER 124.5 350.25	UNICOM 122.7 (CTAF) 0
----------------------------	--------------------------------------	---------------------------------



ELEV **7680** **D** TDZE **7680**

HIRL Rwy 6-24
REIL Rwy 24

14000
tr 242°

9400 X 1.50
0.3% UP

2081 X 1.500
0.3% UP
35

242°

14000	KEEZR	NUWZO	VGSI and RNAV glidepath not coincident (VGSI Angle 3.60/TCH 71).		ROMLY
tr 242°			JAMSS	FEGUL	
	CULKI	GADVY	9500	10100	10600
	8320	8776	279°	294°	Procedure Turn NA GP 3.60° TCH 65
	RW24		9500		
			1.5 NM	1.2 NM	1.9 NM
1.9 NM	3.4 NM				
CATEGORY	A	B	C	D	
RNP 0.10 DA	8029-1 349 (400-1)			NA	
AUTHORIZATION REQUIRED					

SW-1, 11 JUN 2026 to 09 JUL 2026

SW-1, 11 JUN 2026 to 09 JUL 2026