

APP CRS	Rwy Ldg	<b>9400</b>
<b>061°</b>	TDZE	<b>7667</b>
	Apt Elev	<b>7680</b>

# RNAV (RNP) RWY 6

GUNNISON-CRESTED BUTTE RGNL (GUC)

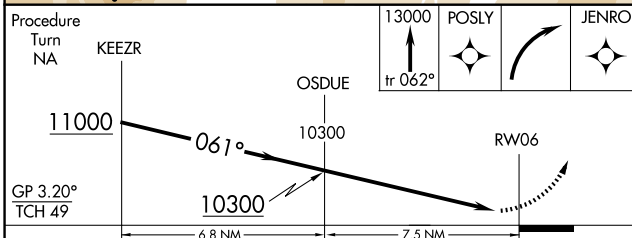
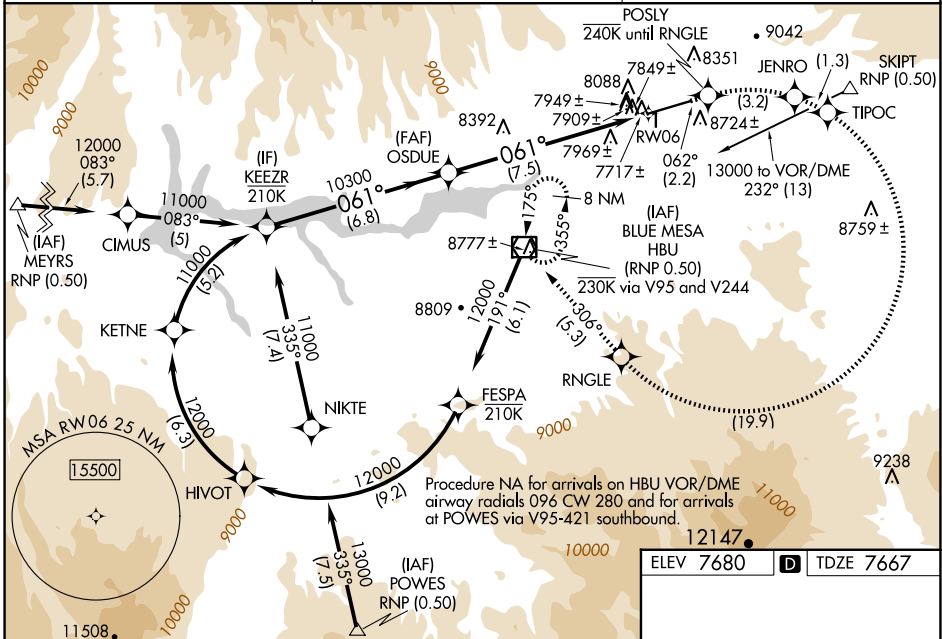
RF and GPS required. When local altimeter setting not received, procedure NA. For uncompensated Baro-VNAV systems, procedure NA below -29°C (-20°F) or above 54°C (130°F). When VGSi inoperative, procedure NA at night. Visibility reduction by helicopters NA. Missed approach requires RNP less than 1.0.

\* Missed approach requires minimum climb of 310 feet per NM to 9000.  
 # Missed approach requires minimum climb of 260 feet per NM to 9000.  
 † Missed approach requires minimum climb of 230 feet per NM to 9000.

For inoperative MALSF, increase RNP 0.11\* visibility to 1½, RNP 0.20 # to 1¼, RNP 0.26 † to 2, and RNP 0.30 to 2¼.

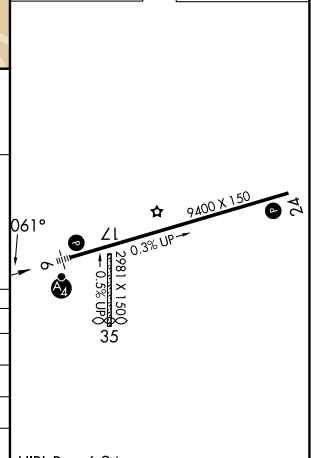
**MISSED APPROACH:** (Do not exceed 240 KIAS until RNGLE) Climb to 13000 via track 062° to POSLY, and via right turn to JENRO, and via right turn to TIPOC, and via right turn to RNGLE, and via track 306° to HBU VOR/DME and hold.

AWOS-3PT <b>135.075</b>	DENVER CENTER <b>124.5 350.25</b>	UNICOM <b>122.7 (CTAF)</b>
----------------------------	--------------------------------------	-------------------------------



CATEGORY	A	B	C	D
RNP 0.11 DA*	NA	8125-1¼	458 (500-1¼)	NA
RNP 0.20 DA#	NA	8219-1½	552 (600-1½)	NA
RNP 0.26 DA†	NA	8294-1¾	627 (700-1¾)	NA
RNP 0.30 DA	NA	8354-2	687 (700-2)	NA

ELEV 7680	TDZE 7667
-----------	-----------



## AUTHORIZATION REQUIRED

HIRL Rwy 6-24  
REIL Rwy 24

SW-1, 11 JUN 2026 to 09 JUL 2026

SW-1, 11 JUN 2026 to 09 JUL 2026