

WAAS CH <b>66017</b> <b>W30A</b>	APP CRS <b>298°</b>	Rwy Ldg TDZE Apt Elev	<b>6516</b> <b>828</b> <b>828</b>
--	------------------------	-----------------------------	---

# RNAV (GPS) RWY 30

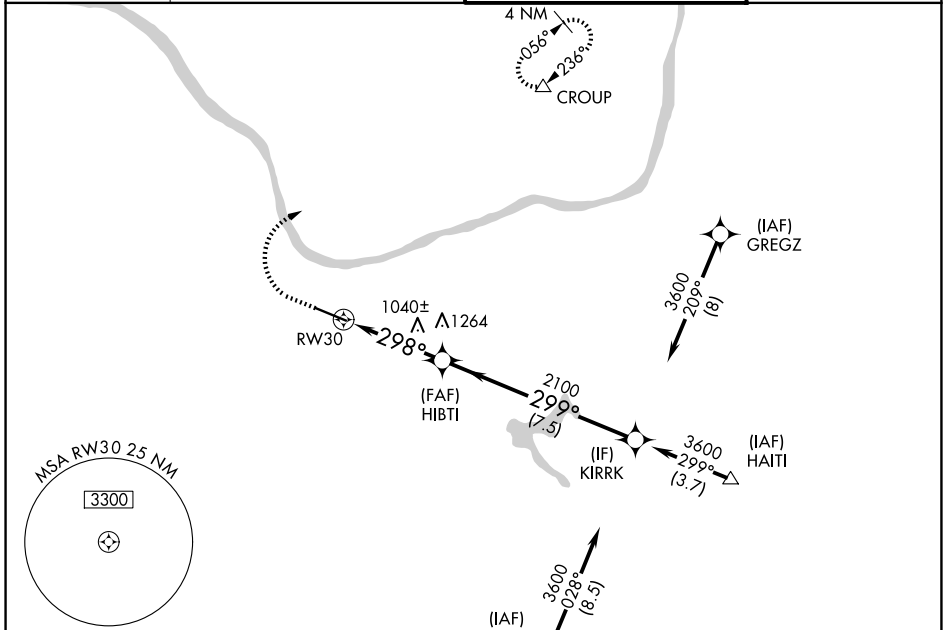
TRI-STATE/MILTON J FERGUSON FLD (HTS)

RNP APCH - GPS.

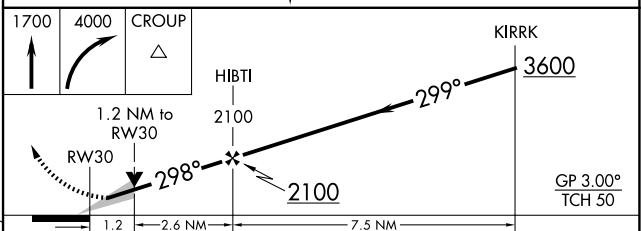
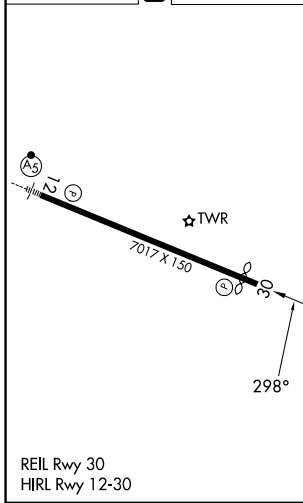
⚠ For uncompensated Baro-VNAV systems, LNAV/VNAV NA below -14°C or above 54°C.

MISSED APPROACH: Climb to 1700 then climbing right turn to 4000 direct CROUP and hold, continue climb-in-hold to 4000.

ATIS <b>125.2</b>	HUNTINGTON APP CON <b>119.75 270.1</b>	HUNTINGTON TOWER <b>118.5 270.1</b>	GND CON <b>121.9</b>
----------------------	---	--	-------------------------



ELEV 828	<b>D</b>	TDZE 828
----------	----------	----------



CATEGORY	A	B	C	D
LPV DA		1028- <sup>3</sup> / <sub>4</sub>	200 (200- <sup>3</sup> / <sub>4</sub> )	
LNAV/VNAV DA		1146- <sup>7</sup> / <sub>8</sub>	318 (400- <sup>7</sup> / <sub>8</sub> )	
LNAV MDA	1260-1	432 (500-1)	1260-1 <sup>1</sup> / <sub>4</sub>	432 (500-1 <sup>1</sup> / <sub>4</sub> )
CIRCLING	1300-1 472 (500-1)	1380-1 552 (600-1)	1520-2 692 (700-2)	1740-3 912 (1000-3)

NE-4, 11 JUN 2026 to 09 JUL 2026

NE-4, 11 JUN 2026 to 09 JUL 2026