

DALHART, TEXAS

AL-537 (FAA)

20002

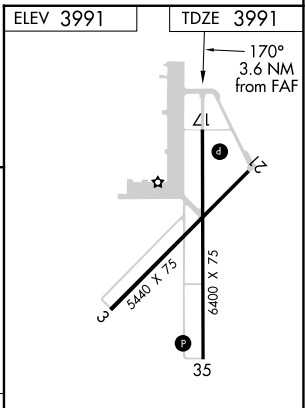
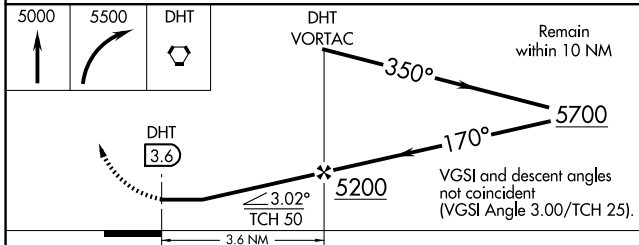
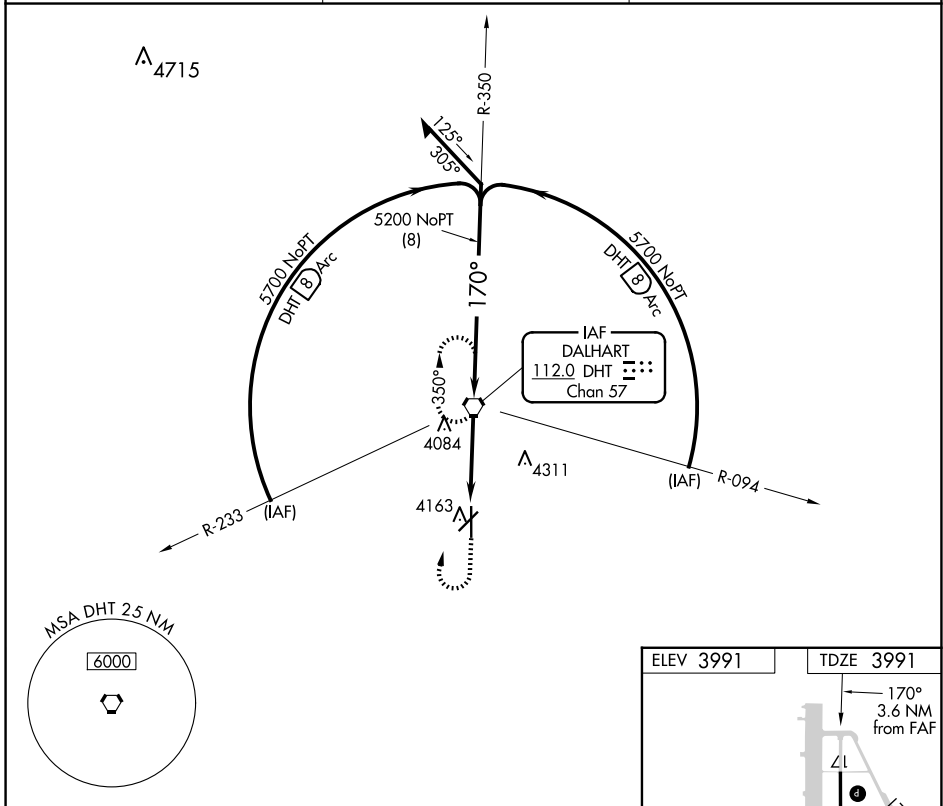
VORTAC DHT 112.0 Chan 57	APP CRS 170°	Rwy Idg TDZE Apt Elev	6400 3991 3991
---------------------------------------	------------------------	-----------------------------	---

VOR RWY 17

DALHART MUNI (DHT)

⚠ Circling NA west of Rwy 17-35. MISSED APPROACH: Climb to 5000 then climbing right turn to 5500 direct DHT VORTAC and hold.

ASOS 134.075	ALBUQUERQUE CENTER 127.85 285.475	UNICOM 122.95 (CTAF) 0
------------------------	---	---



CATEGORY	A	B	C	D
S-17	4520-1 529 (600-1)	4520-1½ 529 (600-1½)	4520-1¾ 529 (600-1¾)	4520-2 529 (600-2)
C CIRCLING	4520-1 529 (600-1)	4660-1 669 (700-1)	4660-1¾ 669 (700-1¾)	4660-2 669 (700-2)

REIL Rwy 17 and 35					
MRL Rwy 3-21 and 17-35 0					
FAF to MAP 3.6 NM					
Knots	60	90	120	150	180
Min:Sec	3:36	2:24	1:48	1:26	1:12

DALHART, TEXAS
Amdt 12E 02JAN20

36°01'N-102°33'W

DALHART MUNI (DHT)

VOR RWY 17

SC-2, 11 JUN 2026 to 09 JUL 2026

SC-2, 11 JUN 2026 to 09 JUL 2026