

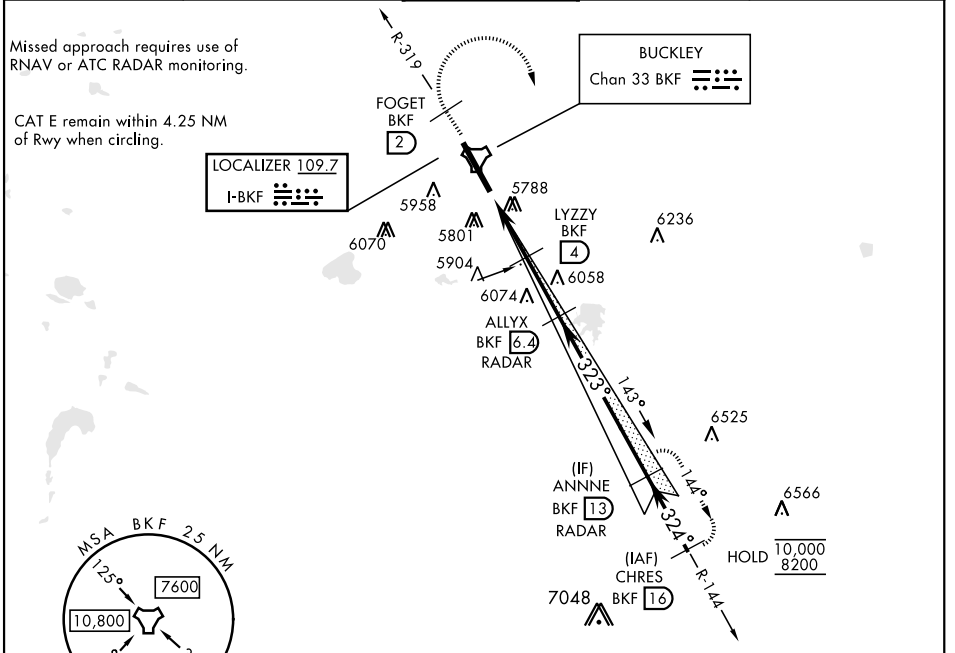
AURORA, COLORADO

# ILS or LOC/DME RWY 32

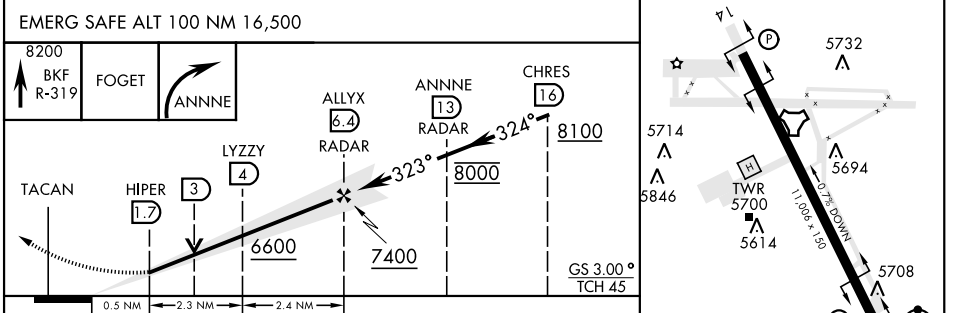
LOC I-BKF <b>109.7</b>	APCH CRS <b>323°</b>	Rwy Ldg <b>11,006</b> TDZE <b>5663</b> Arprt Elev <b>5663</b>	AL-538 [USAF]	BUCKLEY SFB (KBKF)
---------------------------	-------------------------	---	---------------	--------------------

▼ \* When ALS inop, increase RVR to 40 and vis to ¼ miles.  
 \*\* When ALS inop, increase CAT AB RVR to 55 and vis to 1 mile, CAT CDE vis to 1 ½ miles.  
 \*\*\* Circling NA East of Rwy 14-32.

ATIS ★ <b>119.675 259.3</b>	DENVER APP CON <b>128.45 251.075</b>	TOWER ★ <b>121.0 291.675</b>	GND CON <b>121.6 275.8</b>	CLNC DEL <b>121.6 275.8</b>
--------------------------------	---	---------------------------------	-------------------------------	--------------------------------



ELEV 5663	TDZE 5663
-----------	-----------



CATEGORY	A	B	C	D	E
S-ILS 32 *	5863/24		200	(200-½)	
S-LOC 32 **	6280/24 617 (700-½)		6280-1¾	617	(700-1¾)
CIRCLING ***	6280-1 617 (700-1)		6360-2 697 (700-2)	6400-2¼ 737 (800-2¼)	6420-2¾ 757 (800-2¾)

HIRL Rwy 14-32  
 REIL Rwy 14

AURORA, COLORADO 39°42'N-104°45'W BUCKLEY SFB (KBKF)

# ILS or LOC/DME RWY 32

SW-1, 11 JUN 2026 to 09 JUL 2026

SW-1, 11 JUN 2026 to 09 JUL 2026