

PIKES THREE DEPARTURE

AL-538 (FAA)

BUCKLEY SPACE FORCE BASE (KBKF)
AURORA, COLORADO

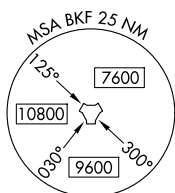
DENVER DEP CON
128.45 251.075
ATIS
119.675 259.3
CLNC DEL
121.6 275.8

RADAR required.

**TOP ALTITUDE:
ASSIGNED BY ATC**

TAKEOFF MINIMUMS

All Rwys: Standard.



BUCKLEY
Chan 33
BKF (109.6)

DENVER
117.9 DEN Chan 126

HUGO
112.1 HGO Chan 58

SOLAR

ADANE

BLACK FOREST
112.5 BRK Chan 72

DRAKE

TEHEV

MOCA 14300 for
ALAMOSA Transition.

BINKE

PUEBLO
116.7 PUB Chan 114

ALAMOSA
113.9 ALS Chan 86

NOTE: Chart not to scale.

DEPARTURE ROUTE DESCRIPTION

TAKEOFF ALL RUNWAYS: Fly assigned heading and altitude for RADAR vectors to assigned route. Expect filed altitude 10 minutes after departure.

LOST COMMUNICATIONS: If no transmissions are received within one minute after departure, maintain assigned heading until 7000, then climb to filed altitude direct to DEN VOR/DME, then on assigned route. If filed altitude is above 10000, cross DEN VOR/DME at or above 11000.

ALAMOSA TRANSITION (PIKES3.ALS): From over DEN VOR/DME on DEN R-197 to TEHEV, then on ALS R-002 to ALS VORTAC.

BINKE TRANSITION (PIKES3.BINKE): From over DEN VOR/DME on DEN R-197 to TEHEV, then on ALS R-002 to BINKE.

PUEBLO TRANSITION (PIKES3.PUB): From over DEN VOR/DME on DEN R-159 to ADANE, then on PUB R-354 to PUB VORTAC.

PIKES THREE DEPARTURE

(PIKES3.DEN) 12JUN25

AURORA, COLORADO
BUCKLEY SPACE FORCE BASE (KBKF)

SW-1, 11 JUN 2026 to 09 JUL 2026

SW-1, 11 JUN 2026 to 09 JUL 2026