

RADAR required.

(YELLOW5 DEN) 25219  
YELLOWSTONE FIVE DEPARTURE

BUCKLEY SPACE FORCE BASE (KBKF)  
AURORA, COLORADO  
AL-538 (FAA)

DENVER DEP CON  
128.45 251.075  
ATIS  
119.675 259.3  
CLINC DEL  
121.6 275.8

MEDICINE BOW  
116.85 MBW  
Chan 115(Y)

RAPID CITY  
112.3 RAP  
Chan 70

SCOTTSDLUFF  
112.6 BFF  
Chan 73

CHEYENNE  
113.1 CYS  
Chan 78

LARAMIE  
117.6 LAR  
Chan 123

NATTI

HANKI

TOP ALTITUDE:  
ASSIGNED BY ATC

YAMMI  
12000 (For MEDICINE BOW  
transition only)

YALES

COPLA

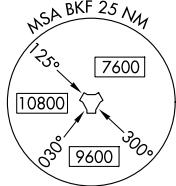
YOKES

GILL  
114.2 GLL  
Chan 89

BUCKLEY  
Chan 33  
BKF  
(109.6)

DENVER  
117.9 DEN  
Chan 126

MOCA 7900 for SCOTTSDLUFF Transition.



TAKEOFF MINIMUMS  
All Rwy's: Standard.

NOTE: Chart not to scale.

(CONTINUED ON FOLLOWING PAGE)

YELLOWSTONE FIVE DEPARTURE  
(YELLOW5 DEN) 12JUN25

BUCKLEY SPACE FORCE BASE (KBKF)  
AURORA, COLORADO



DEPARTURE ROUTE DESCRIPTION

TAKEOFF ALL RUNWAYS: Fly assigned heading and altitude for RADAR vectors to assigned route. Expect filed altitude 10 minutes after departure.

LOST COMMUNICATIONS: If no transmissions are received within one minute after departure, maintain assigned heading until 7000, then climb to filed altitude direct to DEN VOR/DME, then on assigned route. If filed altitude is above 10000, cross DEN VOR/DME at or above 11000.

CHEYENNE TRANSITION (YELLOW5.CYS): From over DEN VOR/DME on DEN R-349 and CYS R-163 to CYS VORTAC.

HANKI TRANSITION (YELLOW5.HANKI): From over DEN VOR/DME on DEN R-015 and GLL R-034 to HANKI.

LARAMIE TRANSITION (YELLOW5.LAR): From over DEN VOR/DME on DEN R-334 and LAR R-125 to LAR VOR/DME.

MEDICINE BOW TRANSITION (YELLOW5.MBW): From over DEN VOR/DME on DEN R-334 and MBW R-133 to MBW VOR/DME.

NATTI TRANSITION (YELLOW5.NATTI): From over DEN VOR/DME on DEN R-334 and LAR R-125 to LAR VOR/DME, then on LAR R-273 to NATTI.

RAPID CITY TRANSITION (YELLOW5.RAP): From over DEN VOR/DME on DEN R-359 and GLL R-174 to GLL VOR/DME, then on GLL R-005 and RAP R-186 to RAP VORTAC.

SCOTTSBLUFF TRANSITION (YELLOW5.BFF): From over DEN VOR/DME on DEN R-015 and BFF R-191 to BFF VORTAC.

SW-1, 11 JUN 2026 to 09 JUL 2026

SW-1, 11 JUN 2026 to 09 JUL 2026