

HI-ILS or LOC Z RWY 31

LOC I-OFF 109.5	APCH CRS 307°	Rwy ldg 10,612 TDZE 991 Arprt Elev 1048
---------------------------	-------------------------	--

[USAF]

OFFUTT AFB (KOFF)

RADAR or DME required

- ▼ * When ALS inop, increase CAT CDE RVR to 40 and vis to 3/4 mile.
- ** When ALS inop, increase CAT CDE RVR to 55 and vis to 1 mile.
- *** Circling not authorized N of Rwy 13-31.

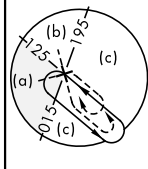
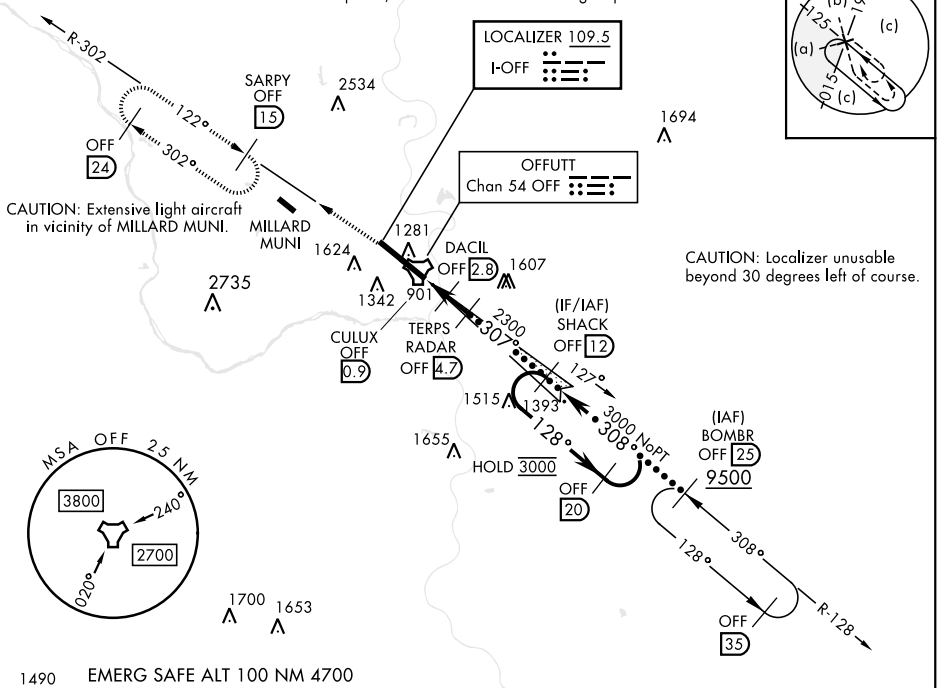


MISSED APPROACH: Climb to 3000 via OFF TACAN R-302 to SARPY and hold.

ATIS 126.025 273.5	OMAHA APP CON 124.5 263.0 (E) 135.875 354.05 (W)	TOWER 123.7 279.625	GND CON 121.7 289.4
------------------------------	--	-------------------------------	-------------------------------

RVR 1800 authorized with use of FD or AP or HUD to DA.

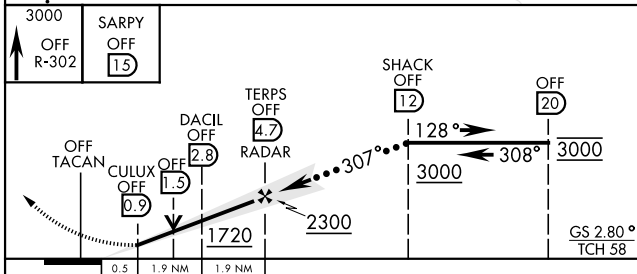
CAUTION: When circling to Rwy 13 at night, operational VGSI required, remain on or above VGSI glidepath until threshold.



CAUTION: Localizer unusable beyond 30 degrees left of course.

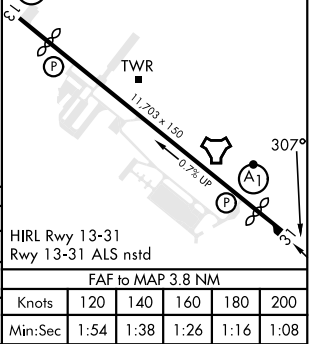
NC-2, 11 JUN 2026 to 09 JUL 2026

NC-2, 11 JUN 2026 to 09 JUL 2026



ELEV	1048	TDZE	991
Rwy 13 ldg 10,695'		Rwy 31 ldg 10,612'	

CATEGORY	C	D	E
S-ILS 31*	1192/24	200	(200-1/2)
S-LOC 31**	1360/35	368	(400-3/4)
*** CIRCLING	1660-13/4 612 (700-13/4)	1940-3	892 (900-3)



OMAHA, NEBRASKA 41°07'N-95°54'W OFFUTT AFB (KOFF)

Adm 1 22FEB24

HI-ILS or LOC Z RWY 31