

# ILS or LOC RWY 13

LOC I-ATB <b>111.7</b>	APCH CRS <b>127°</b>	Rwy ldg <b>10,695</b> TDZE <b>1048</b> Arpt Elev <b>1048</b>
---------------------------	-------------------------	--

[USAF]

OFFUTT AFB (KOFF)

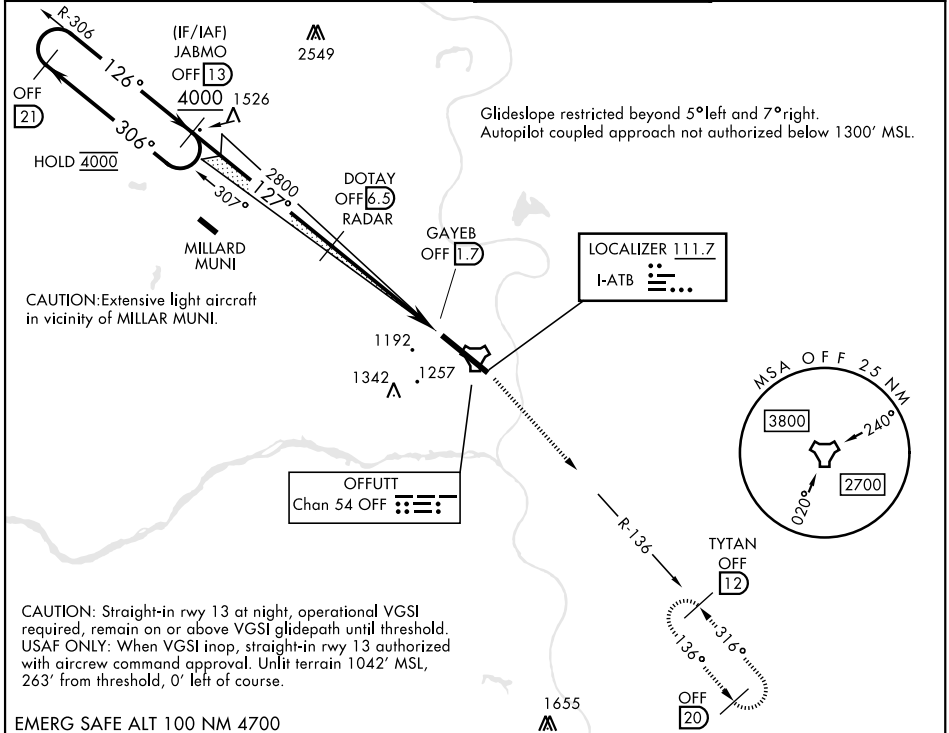
RADAR or DME required

ALSF-1 (A1)

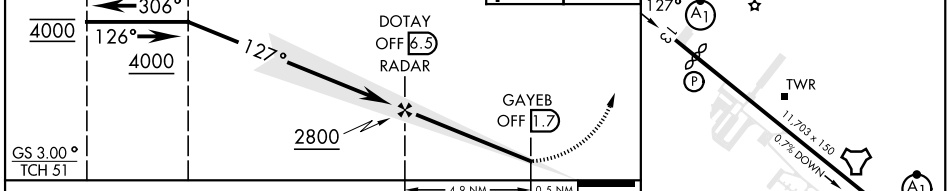
MISSED APPROACH: Climb to 3000 via OFF TACAN R-136 to TYTAN and hold.

\* When ALS inop, increase CAT AB RVR to 55, vis to 1 mile; CAT CDE vis to 1/8 miles.  
\*\* Circling not authorized N of Rwy 13-31.

ATIS <b>126.025 273.5</b>	OMAHA APP CON <b>124.5 263.0 (E)</b> <b>135.875 354.05 (W)</b>	TOWER <b>123.7 279.625</b>	GND CON <b>121.7 289.4</b>
------------------------------	--	-------------------------------	-------------------------------



OFF 21	JABMO OFF 13	3000 OFF R-136	TYTAN OFF 12	ELEV 1048	TDZE 1048
--------	--------------	----------------	--------------	-----------	-----------



CATEGORY	A	B	C	D	E	HIRL Rwy 13-31 Rwy 13-31 ALS nstd FAF to MAP 4.9 NM
S-ILS 13		1298/50	250	(300-1)		
S-LOC 13*	1560/50	512 (600-1)	1560/55	512 (600-1)		Knots: 60 90 120 150 180 Min:Sec: 4:54 3:16 2:27 1:58 1:38
CIRCLING**	1560-1	512 (600-1)	1660-1 3/4 612 (700-13/4)	1940-3	892 (900-3)	

# ILS or LOC RWY 13

NC-2, 11 JUN 2026 to 09 JUL 2026

NC-2, 11 JUN 2026 to 09 JUL 2026