

VORTAC SAF <b>110.6</b> Chan <b>43</b>	APP CRS <b>158°</b>	Rwy Ldg TDZE Apt Elev <b>6349</b>	<b>N/A</b> <b>N/A</b> <b>6349</b>
--	------------------------	--------------------------------------	---

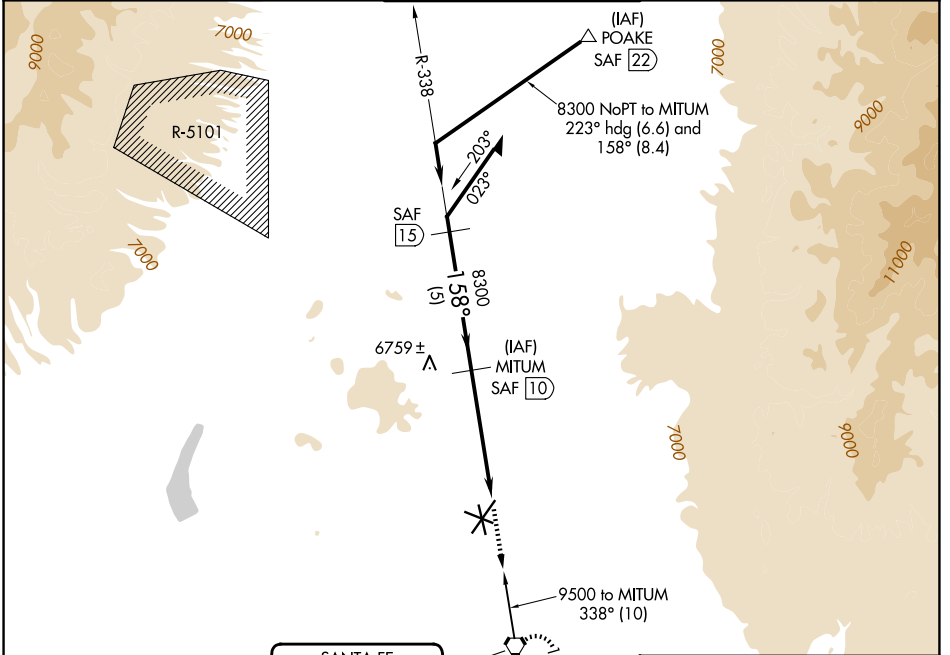
# VOR/DME-A

## SANTA FE RGNL (SAF)

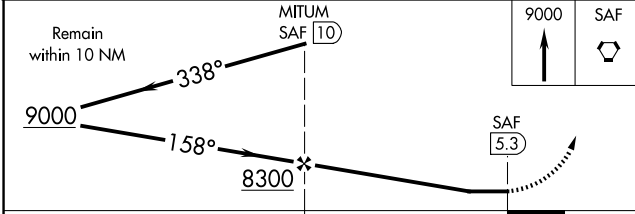
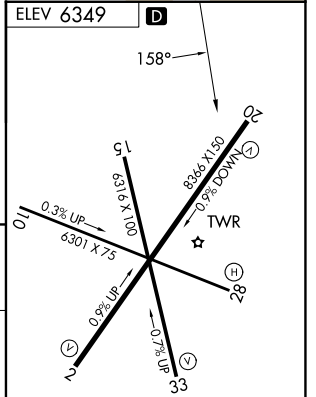
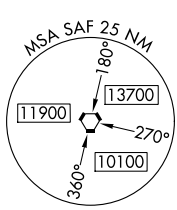
**⚠** When control tower closed, obtain local altimeter setting on UNICOM; when not received, use Los Alamos altimeter setting: increase all MDAs 160 feet.

**MISSED APPROACH:** Climb to 9000 direct SAF VORTAC and hold, continue climb-in-hold to 9000.

ATIS <b>128.55</b>	ALBUQUERQUE CENTER <b>132.8 346.35</b>	<b>SANTA FE TOWER ★</b> <b>119.5 (CTAF) 239.3</b>	GND CON <b>121.7</b>	UNICOM <b>122.95</b>
-----------------------	---	--	-------------------------	-------------------------



**SANTA FE**  
110.6 SAF  
Chan 43



CATEGORY	A	B	C	D	REIL Rwy 10, 15, 20 and 33 MIRL Rwy 2-20 and 15-33
CIRCLING	6960-1	611 (700-1)	7340-3 991 (1000-3)	7660-3 1311 (1400-3)	

SW-1, 11 JUN 2026 to 09 JUL 2026

SW-1, 11 JUN 2026 to 09 JUL 2026