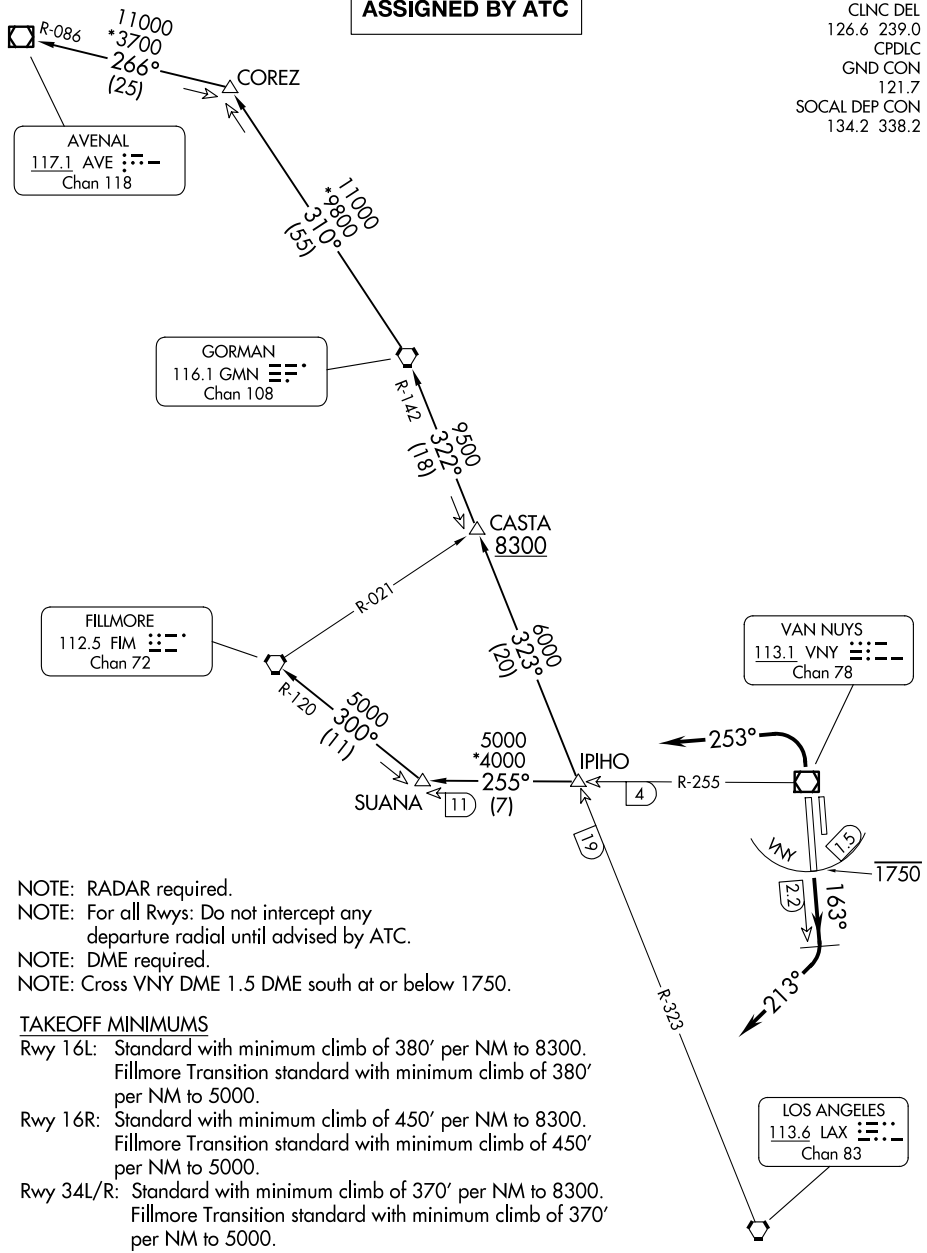


**TOP ALTITUDE:
ASSIGNED BY ATC**

ATIS
127.55
CLNC DEL
126.6 239.0
CPDLC
GND CON
121.7
SOCAL DEP CON
134.2 338.2



SW-3, 11 JUN 2026 to 09 JUL 2026

SW-3, 11 JUN 2026 to 09 JUL 2026

NOTE: RADAR required.
NOTE: For all Rwy's: Do not intercept any departure radial until advised by ATC.
NOTE: DME required.
NOTE: Cross VNY DME 1.5 DME south at or below 1750.

TAKEOFF MINIMUMS
Rwy 16L: Standard with minimum climb of 380' per NM to 8300. Fillmore Transition standard with minimum climb of 380' per NM to 5000.
Rwy 16R: Standard with minimum climb of 450' per NM to 8300. Fillmore Transition standard with minimum climb of 450' per NM to 5000.
Rwy 34L/R: Standard with minimum climb of 370' per NM to 8300. Fillmore Transition standard with minimum climb of 370' per NM to 5000.

NOTE: Chart not to scale. (CONTINUED ON FOLLOWING PAGE)



DEPARTURE ROUTE DESCRIPTION

TAKEOFF RUNWAYS 16L/R: Climb on heading 163° until VNY 2.2 DME, then climbing right turn heading 213°, FOR RADAR VECTORS to IPIHO, thence . . .

TAKEOFF RUNWAYS 34L/R: Climbing left turn heading 253°, FOR RADAR VECTORS to IPIHO, thence . . .

. . . on (transition) or (assigned route). Maintain ATC assigned altitude, expect filed altitude/flight level 10 minutes after departure.

LOST COMMUNICATIONS: If not in contact with departure control within 3 NM:

Rwys 16L/R intercept the LAX R-323 and GMN R-142. Then as assigned.

Rwys 34L/R intercept VNY R-255. Then as assigned.

AVENAL TRANSITION (CANOG3.AVE): From over IPIHO on LAX R-323 and GMN R-142 to CASTA, then on GMN R-142 to GMN VORTAC, then on GMN R-310 to COREZ, then on AVE R-086 to AVE VOR/DME.

FILLMORE TRANSITION (CANOG3.FIM): From over IPIHO on VNY R-255 to SUANA, then on FIM VORTAC R-120 to FIM VORTAC.

GORMAN TRANSITION (CANOG3.GMN): From over IPIHO on LAX R-323 and GMN R-142 to CASTA, then on GMN R-142 to GMN VORTAC.

SW-3, 11 JUN 2026 to 09 JUL 2026

SW-3, 11 JUN 2026 to 09 JUL 2026