

LOC/DME I-VNK 110.5 Chan 42	APP CRS 175°	Rwy Ldg TDZE 492 Apt Elev 542
---	------------------------	---

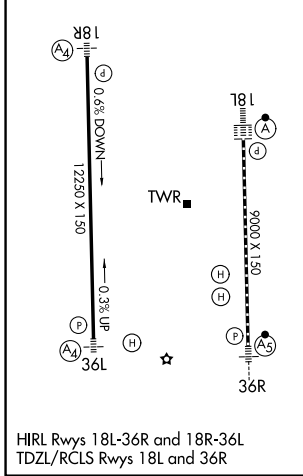
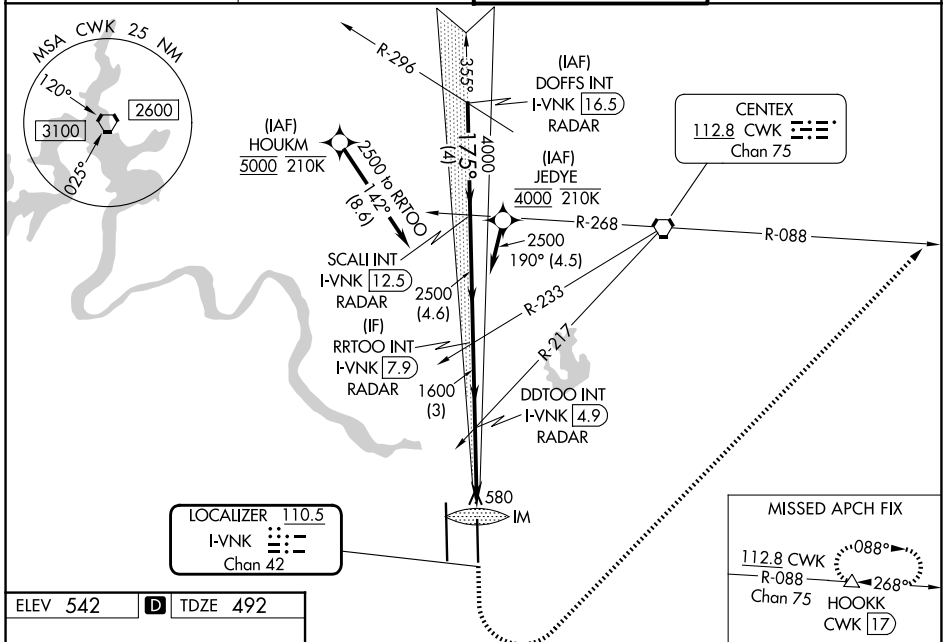
ILS RWY 18L (CAT II & III)

AUSTIN-BERGSTROM INTL (AUS)

RNP APCH-GPS. From HOUKM or JEDYE.
RADAR required for procedure entry from DOFFS. DME required.
Simultaneous approach authorized.

ALSF-2
MISSED APPROACH: Climb to 1000 then climbing left turn to 3000 on heading 040° and CWK VORTAC R-088 to HOOKK/CWK 17 DME and hold.

D-ATIS 124.4	AUSTIN APP CON 127.225 317.65 (E) 120.875 270.25 (S) 119.0 370.85 (W)	AUSTIN TOWER 121.0 281.5	GND CON 121.9 348.6
------------------------	---	------------------------------------	-------------------------------



VGSI and ILS glidepath not coincident (VGSI Angle 3.00/TCH 74).		1000	3000	HOOKK
DOFFS INT I-VNK 16.5 RADAR	SCALI INT I-VNK 12.5 RADAR	RRTOO INT I-VNK 7.9 RADAR	DDTOO INT I-VNK 4.9 RADAR	HOOKK R-088
5000	4000	2500	1600	IM
GS 3.00° TCH 61	175°	4000	1600	592
4 NM	4.6 NM	3 NM	3.3 NM	1201'
CATEGORY	A	B	C	D
S-ILS 18L	CAT II RA 105/12 100 DA 592			
S-ILS 18L	CAT III RVR 06			

CATEGORY II & III ILS - SPECIAL AIRCREW & AIRCRAFT CERTIFICATION REQUIRED

SC-3, 11 JUN 2026 to 09 JUL 2026

SC-3, 11 JUN 2026 to 09 JUL 2026