

RNAV (RNP) Z RWY 18R

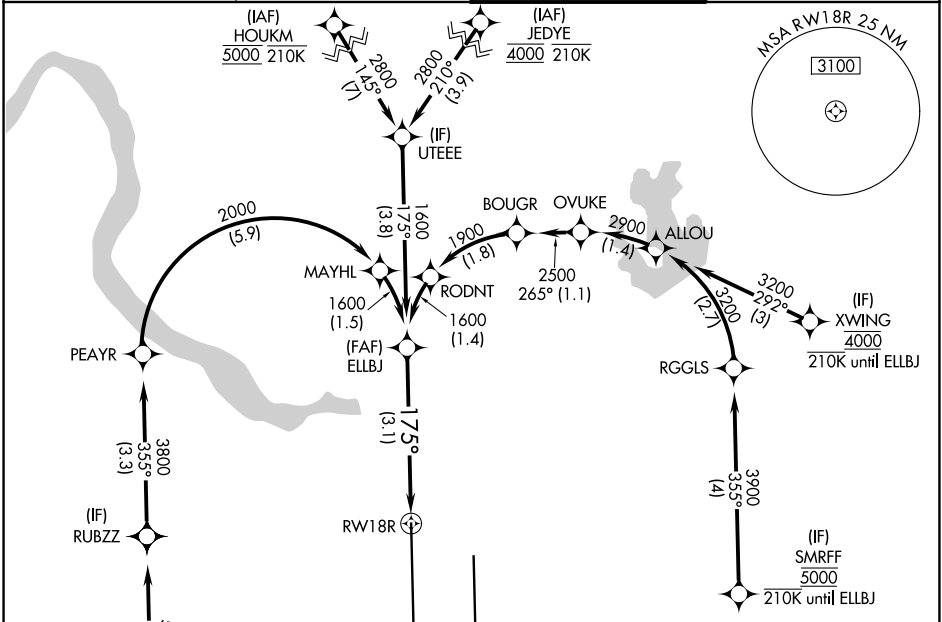
AUSTIN-BERGSTROM INTL (AUS)

APP CRS **175°**
Rwy Ldg **12250**
TDZE **542**
Apt Elev **542**

RNP AR APCH-GPS. RADAR required.
Simultaneous approach authorized. For uncompensated Baro-VNAV systems, procedure NA below -5°C or above 54°C.

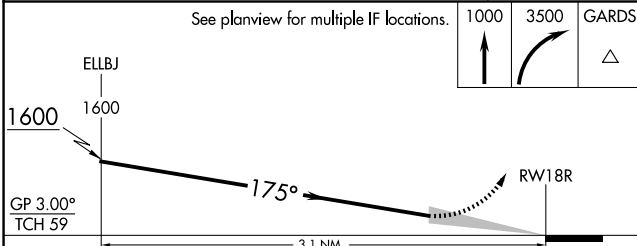
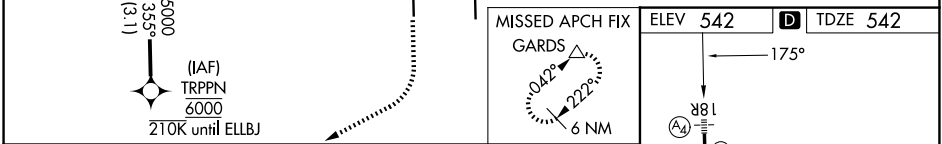
MALS
MISSED APPROACH: Climb to 1000 then climbing right turn to 3500 direct GARDS and hold.

D-ATIS 124.4	AUSTIN APP CON 127.225 317.65 (E) 120.875 270.25 (S) 119.0 370.85 (W)	AUSTIN TOWER 121.0 281.5	GND CON 121.9 348.6
------------------------	---	------------------------------------	-------------------------------



SC-3, 11 JUN 2026 to 09 JUL 2026

SC-3, 11 JUN 2026 to 09 JUL 2026



CATEGORY	A	B	C	D
RNP 0.30 DA		883/40	341 (400-3/4)	

AUTHORIZATION REQUIRED

