

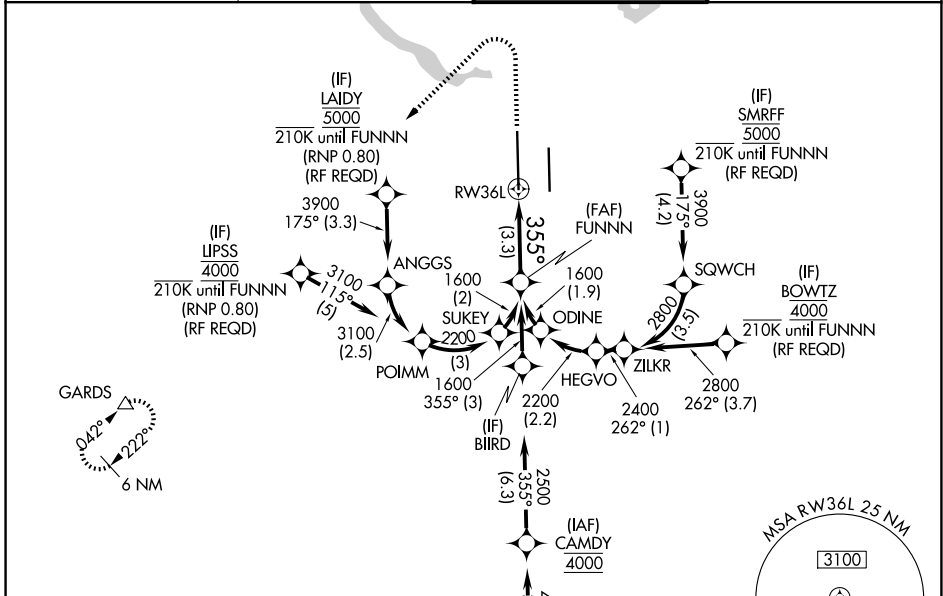
APP CRS	Rwy Ldg	12250
355°	TDZE	496
	Apt Elev	542

RNAV (RNP) Z RWY 36L

AUSTIN-BERGSTROM INTL (AUS)

RNP AR APCH. RADAR required.		MALS	MISSED APPROACH: Climb to 1700 then climbing left turn to 3500 direct GARDS and hold.
▼ Simultaneous approach authorized. For uncompensated Baro-VNAV systems, procedure NA below -5°C or above 54°C. For inop ALS, increase RNP 0.11 all Cats visibility to RVR 4500 and RNP 0.30 all Cats visibility to RVR 5500.			

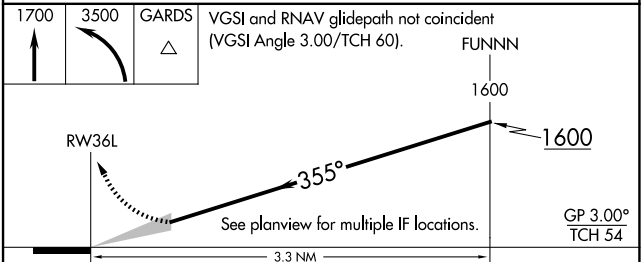
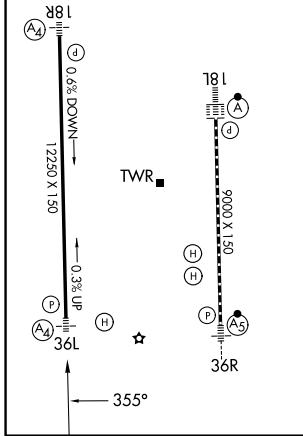
D-ATIS	AUSTIN APP CON	AUSTIN TOWER	GND CON
124.4	127.225 317.65 (E) 120.875 270.25 (S) 119.0 370.85 (W)	121.0 281.5	121.9 348.6



SC-3, 11 JUN 2026 to 09 JUL 2026

SC-3, 11 JUN 2026 to 09 JUL 2026

ELEV	542	D	TDZE	496
HIRL Rwy 18L-36R and 18R-36L TDZL/RCLS Rwy 18L and 36R				



CATEGORY	A	B	C	D
RNP 0.11 DA		758/40	262 (300-¾)	
RNP 0.30 DA		858/40	362 (400-¾)	

AUTHORIZATION REQUIRED