

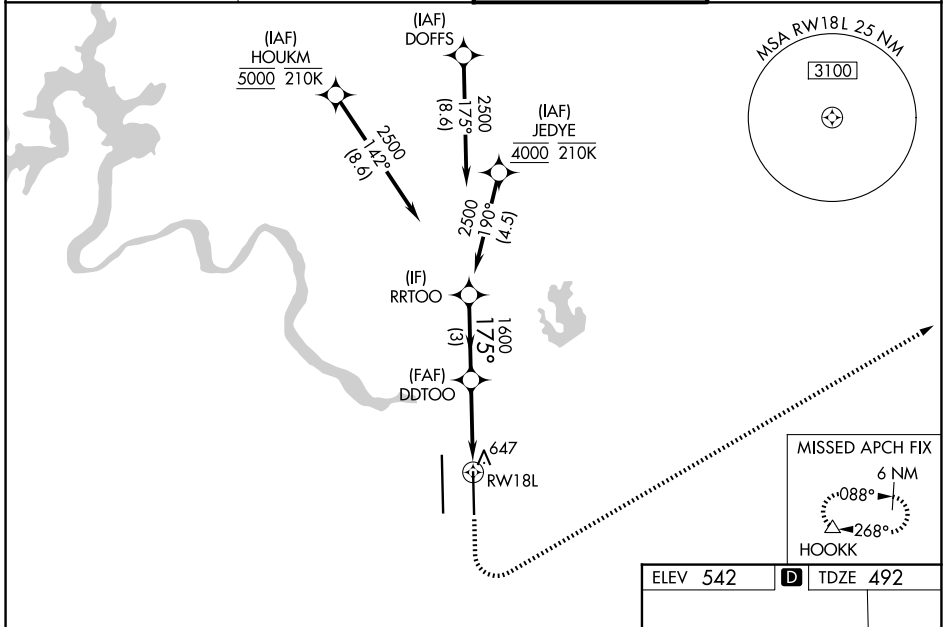
WAAS CH <b>62829</b> <b>W18A</b>	APP CRS <b>175°</b>	Rwy Ldg TDZE <b>492</b> Apt Elev <b>542</b>	<b>9000</b>
--	------------------------	---	-------------

# RNAV (GPS) Y RWY 18L

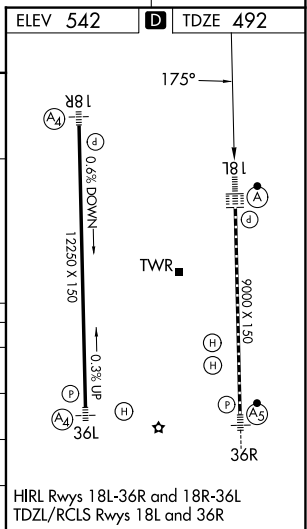
AUSTIN-BERGSTROM INTL (AUS)

RNP APCH-GPS.	ALSF-2 	MISSED APPROACH: Climb to 1000 then climbing left turn to 3000 direct HOOKK and hold.
Simultaneous approach authorized. LNAV procedure NA during simultaneous operations. For uncompensated Baro-VNAV systems, LNAV/VNAV NA below -5°C or above 54°C. Use of FD or AP required during simultaneous operations. For inop ALS, increase LPV Cat E visibility to RVR 4000, LNAV/VNAV visibility all Cats to RVR 6000, and LNAV visibility Cats C, D, and E to RVR 6000.		

D-ATIS <b>124.4</b>	AUSTIN APP CON <b>127.225 317.65 (E)</b> <b>120.875 270.25 (S)</b> <b>119.0 370.85 (W)</b>	AUSTIN TOWER <b>121.0 281.5</b>	GND CON <b>121.9 348.6</b>
------------------------	---	------------------------------------	-------------------------------



RRTOO VGSi and RNAV glidepath not coincident (VGSi Angle 3.00/TCH 74). GP 3.00° TCH 61 2500 175° 1600 3 NM 2.2 NM 1.1 NM RW18L 1.1 NM to RW18L	1000	3000	HOOKK		
	↑	↻	△		
CATEGORY	A	B	C	D	E
LPV DA	692/18		200 (200-½)		
LNAV/VNAV DA	906/40		414 (400-¾)		
LNAV MDA	900/24	408 (400-½)	900/40		408 (400-¾)
CIRCLING	1040-1 498 (500-1)	1120-1 578 (600-1)	1200-1¾ 658 (700-1¾)	1200-2 658 (700-2)	NA



SC-3, 11 JUN 2026 to 09 JUL 2026

SC-3, 11 JUN 2026 to 09 JUL 2026