

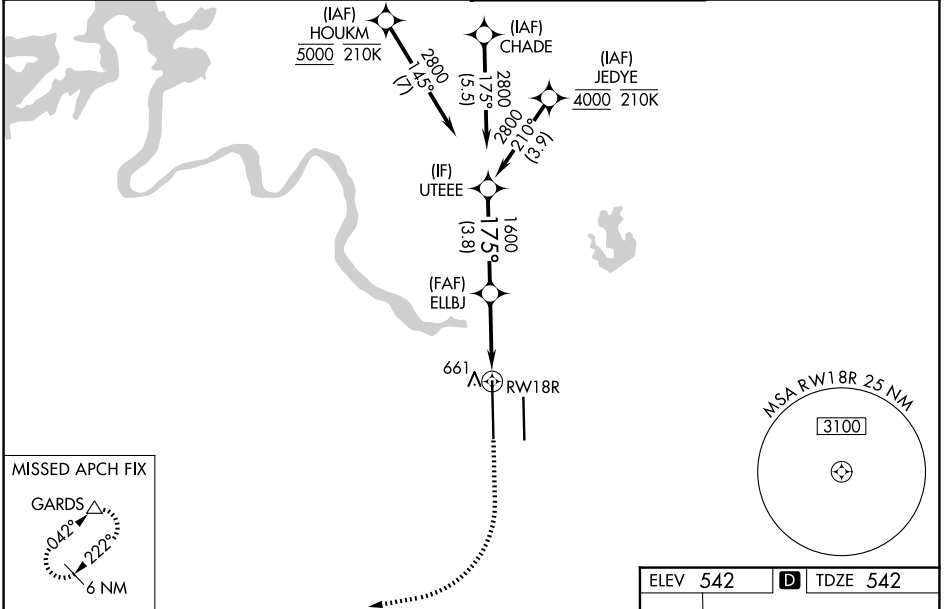
WAAS CH <b>77530</b> <b>W18B</b>	APP CRS <b>175°</b>	Rwy Ldg <b>12250</b> TDZE <b>542</b> Apt Elev <b>542</b>
--	------------------------	--

# RNAV (GPS) Y RWY 18R

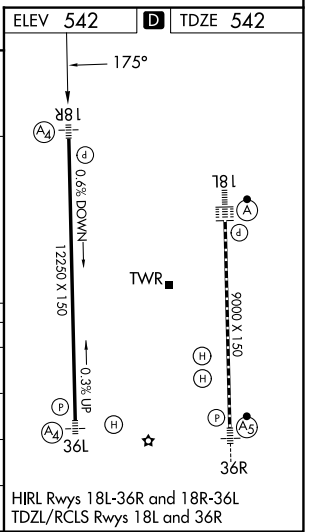
AUSTIN-BERGSTROM INTL (AUS)

RNP APCH-GPS.	MALS	MISSED APPROACH: Climb to 1000 then climbing right turn to 3500 direct GARDS and hold.
<p>Simultaneous approach authorized. LNAV procedure NA during simultaneous operations. For uncompensated Baro-VNAV systems, LNAV/VNAV NA below -5°C or above 54°C. Use of FD or AP required during simultaneous operations. Inop table does not apply to LPV. For inop ALS, increase LNAV/VNAV all Cats visibility to RVR 4500; increase LNAV Cat E visibility to RVR 5500.</p>		

D-ATIS <b>124.4</b>	AUSTIN APP CON <b>127.225 317.65 (E)</b> <b>120.875 270.25 (S)</b> <b>119.0 370.85 (W)</b>	AUSTIN TOWER <b>121.0 281.5</b>	GND CON <b>121.9 348.6</b>
------------------------	---	------------------------------------	-------------------------------



UTEEE	ELLBJ	1000	3500	GARDS	
2800	1600	↑	↷	△	
GP 3.00° TCH 59	1600	0.9 NM to RWY 18R			
← 3.8 NM	← 2.2 NM	← 0.9 NM			
CATEGORY	A	B	C	D	E
LPV DA	742/40		200 (200-¾)		
LNAV/VNAV DA	834/40		292 (300-¾)		
LNAV MDA	900/40		358 (400-¾)		
CIRCLING	1040-1 498 (500-1)	1120-1 578 (600-1)	1200-1¾ 658 (700-1¾)	1200-2 658 (700-2)	NA



SC-3, 11 JUN 2026 to 09 JUL 2026

SC-3, 11 JUN 2026 to 09 JUL 2026