

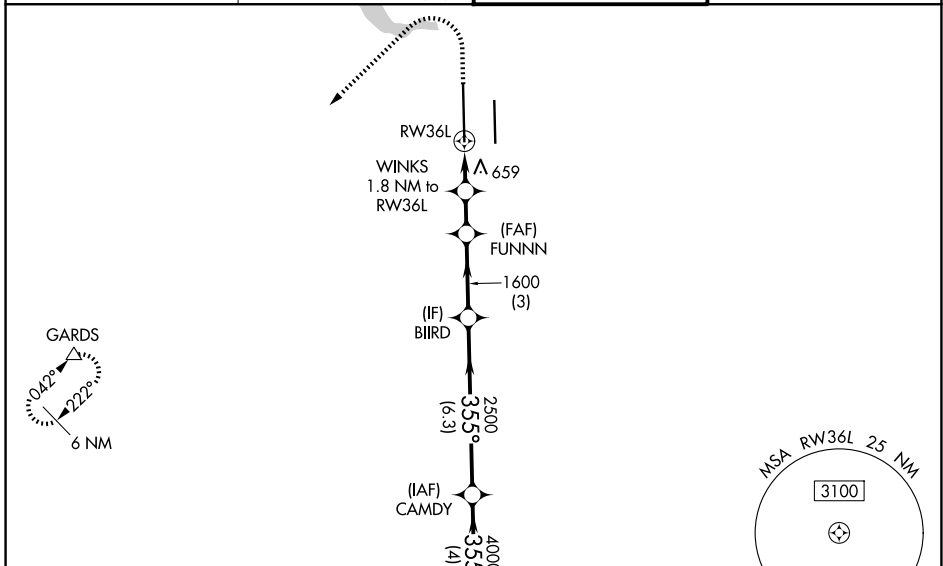
WAAS CH 90229 W36A	APP CRS 355°	Rwy Ldg 12250 TDZE 496 Apt Elev 542
--	------------------------	--

RNAV (GPS) Y RWY 36L

AUSTIN-BERGSTROM INTL (AUS)

RNP APCH-GPS.	MALS ④	MISSED APPROACH: Climb to 1700 then climbing left turn to 3500 direct GARDS and hold.
<p>Simultaneous approach authorized. Use of FD or AP required during simultaneous operations. LNAV procedure NA during simultaneous operations. For uncompensated Baro-VNAV systems, LNAV/VNAV NA below -5°C or above 54°C. Inop table does not apply to LPV all Cats. For inop ALS, increase LNAV/VNAV Cat E visibility to 1 3/8 SM, LNAV Cat E visibility to 1 1/4 SM.</p>		

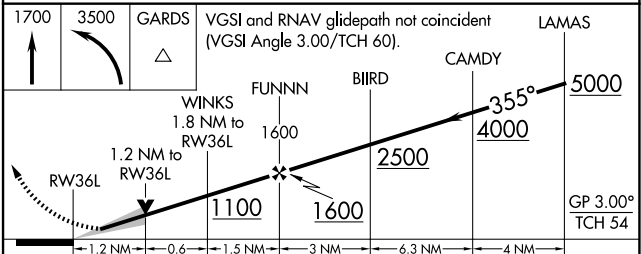
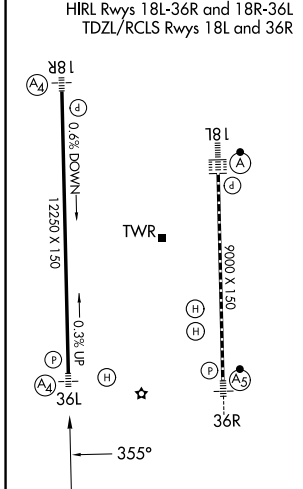
D-ATIS 124.4	AUSTIN APP CON 127.225 317.65 (E) 120.875 270.25 (S) 119.0 370.85 (W)	AUSTIN TOWER 121.0 281.5	GND CON 121.9 348.6
------------------------	---	------------------------------------	-------------------------------



SC-3, 11 JUN 2026 to 09 JUL 2026

SC-3, 11 JUN 2026 to 09 JUL 2026

ELEV 542	D	TDZE 496
-----------------	----------	-----------------



CATEGORY	A	B	C	D	E
LPV DA		696/40		200 (200-3/4)	
LNAV/VNAV DA		970/60		474 (500-1 1/4)	
LNAV MDA	920/40	424 (400-3/4)	920/50		424 (400-1)
CIRCLING	1040-1 498 (500-1)	1120-1 578 (600-1)	1200-1 3/4 658 (700-1 3/4)	1200-2 658 (700-2)	NA