

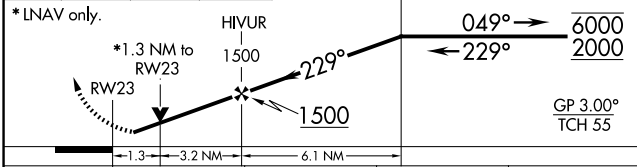
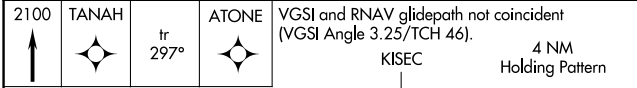
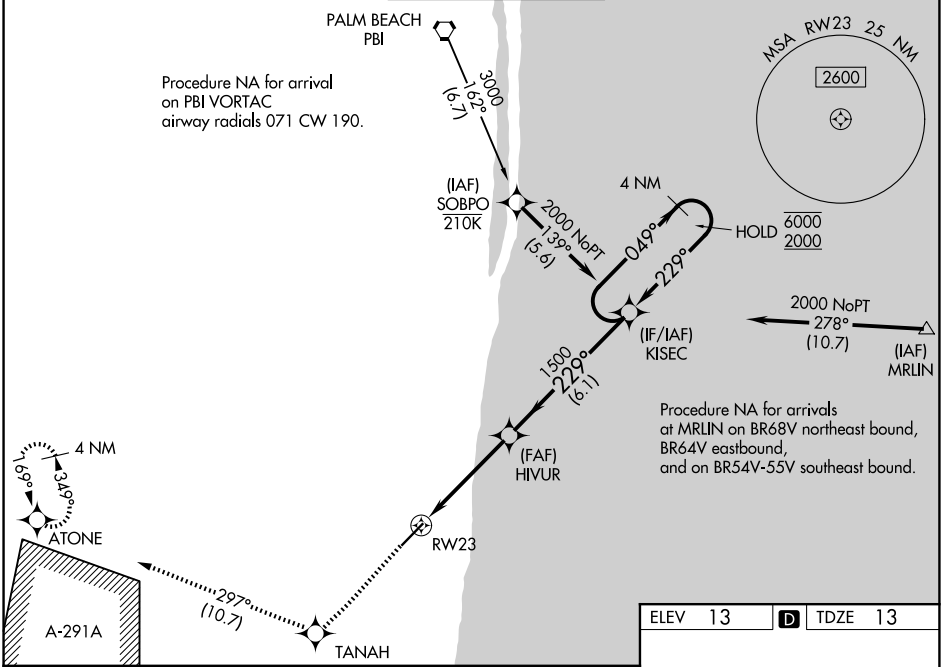
WAAS CH 42801 W23A	APP CRS 229°	Rwy Ldg TDZE Apt Elev	5898 13 13
--	------------------------	-----------------------------	---------------------------------------

RNAV (GPS) Y RWY 23

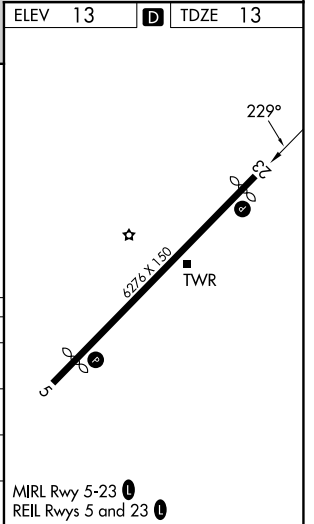
BOCA RATON (BCT)

RNP APCH.	<p>⚠ Rwy 23 helicopter visibility reduction below $\frac{3}{4}$ SM NA. For uncompensated Baro-VNAV systems, procedure NA below -15°C or above 54°C. In minimum visibility conditions, bright lights on highway $\frac{1}{4}$ mile north of airport may be mistaken as runway lights.</p>	MISSED APPROACH: Climb to 2100 direct TANAH and on track 297° to ATONE and hold.

D-ATIS 121.125	PALM BEACH APP CON 127.35 343.6	BOCA RATON TOWER ★ 118.425 (CTAF) 0	GND CON 121.8	GCO 127.35
--------------------------	---	---	-------------------------	----------------------



CATEGORY	A	B	C	D
LPV DA	263- $\frac{7}{8}$		250 (300- $\frac{7}{8}$)	
LNAV/VNAV DA	357-1 $\frac{1}{8}$		344 (400-1 $\frac{1}{8}$)	
LNAV MDA	480-1	467 (500-1)	480-1 $\frac{3}{8}$	467 (500-1 $\frac{3}{8}$)
CIRCLING	680-1	667 (700-1)	680-1 $\frac{3}{4}$ 667 (700-1 $\frac{3}{4}$)	880-2 $\frac{3}{4}$ 867 (900-2 $\frac{3}{4}$)



SE-3, 11 JUN 2026 to 09 JUL 2026

SE-3, 11 JUN 2026 to 09 JUL 2026