

# CAMP SPRINGS ONE DEPARTURE (CAMP1.ADW) [USAF] CAMP SPRINGS, MARYLAND

ATIS 133.675 251.05  
 CPDLC  
 GND CON 121.8 275.8  
 ANDREWS TOWER 118.4 349.0  
 POTOMAC TRACON DEP CON (E) 125.65 348.725 (W) 118.95 257.2

RADAR required  
 554'

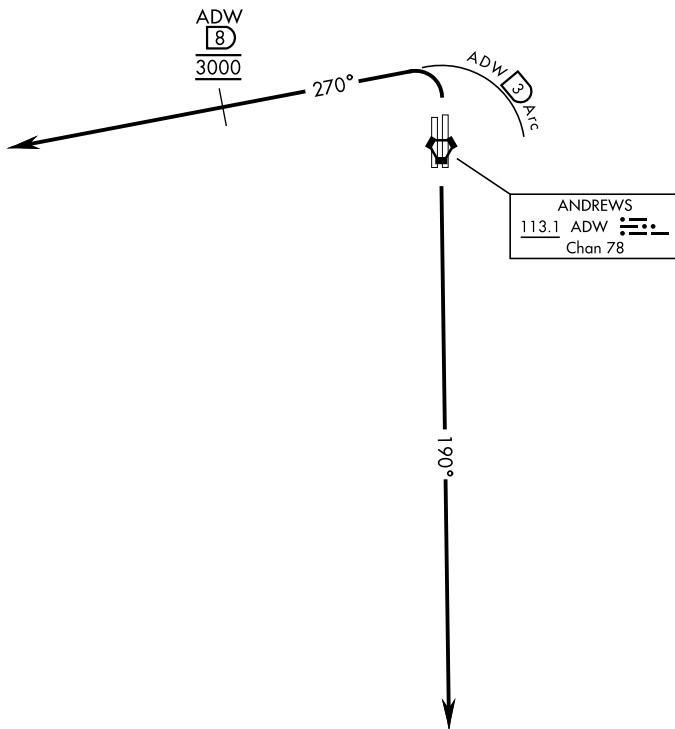
| Rwy  | Knots    | 60  | 120 | 180  | 240  | 300  | 360  |
|------|----------|-----|-----|------|------|------|------|
| 1L/R | V/V(fpm) | 380 | 760 | 1140 | 1520 | 1900 | 2280 |

ATC Climb Rate to 3000

If unable to make published climb gradient advise ATC prior to departure.

1149  
A

## RADAR VECTORS REQUIRED WITHIN 10 NM FROM DEPARTURE



NE-3, 11 JUN 2026 to 09 JUL 2026

NE-3, 11 JUN 2026 to 09 JUL 2026

### DEPARTURE ROUTE DESCRIPTION

TAKEOFF RWY 1L/1R: Turn left climb on heading 270° within 3 DME of ADW VORTAC, cross ADW 8 DME at 3000. Expect radar vectors.

TAKEOFF RWY 19R/19L: Climb on heading 190° to 3000. Expect radar vectors to the west.