

CAMP SPRINGS, MARYLAND

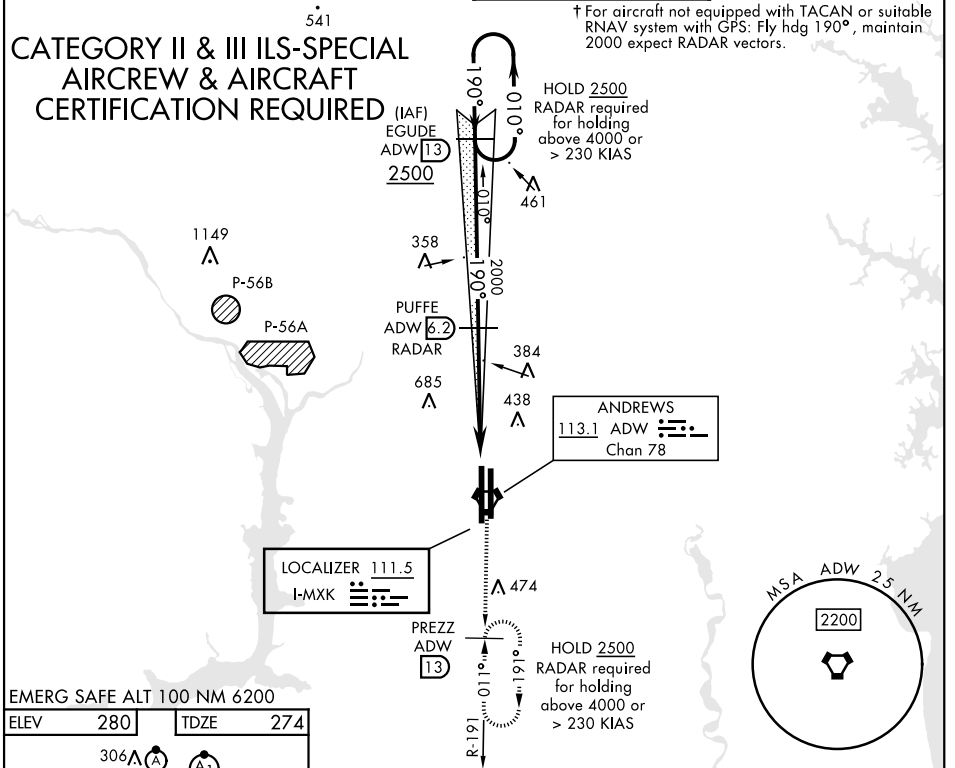
ILS RWY 19R (CAT II & III)

LOC I-MXK 111.5	APCH CRS 190°	Rwy Idg TDZE Arpt Elev	10,309 274 280
---------------------------	-------------------------	------------------------------	---

[USAF] JOINT BASE ANDREWS (ANDREWS AFB) (KADW)

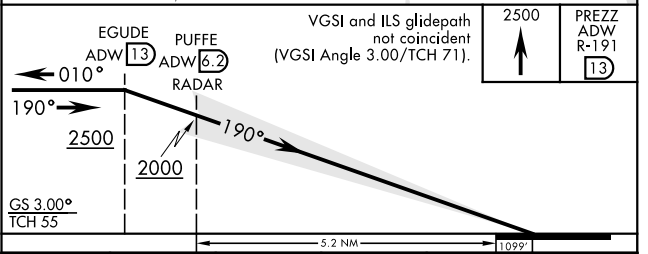
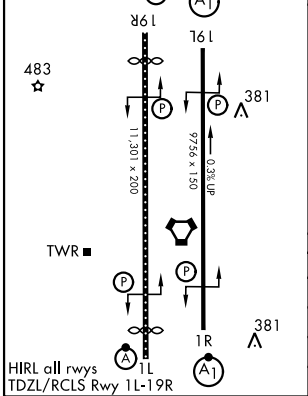
RADAR or DME required		ALSF-2 	† MISSED APPROACH: Climbing to 2500, intercept ADW VORTAC R-191 to PREZZ and hold.
-----------------------	--	------------	--

ATIS 133.675 251.05	POTOMAC APP CON 128.0 335.5	TOWER 118.4 349.0	GND CON 121.8 275.8
-------------------------------	---------------------------------------	-----------------------------	-------------------------------



EMERG SAFE ALT 100 NM 6200

ELEV	280	TDZE	274
------	-----	------	-----



CATEGORY	A	B	C	D	E
S-ILS 19R	CAT II	RA 99/12	100	DA 374	
S-ILS 19R		CAT IIIa	RVR 07		
S-ILS 19R		CAT IIIb	RVR 06		
S-ILS 19R		CAT IIIc	NA		

CAMP SPRINGS, MARYLAND 38°49'N-76°52'W JOINT BASE ANDREWS (ANDREWS AFB) (KADW)

Orig 06OCT22

ILS RWY 19R (CAT II & III)

NE-3, 11 JUN 2026 to 09 JUL 2026

NE-3, 11 JUN 2026 to 09 JUL 2026