

CAMP SPRINGS, MARYLAND

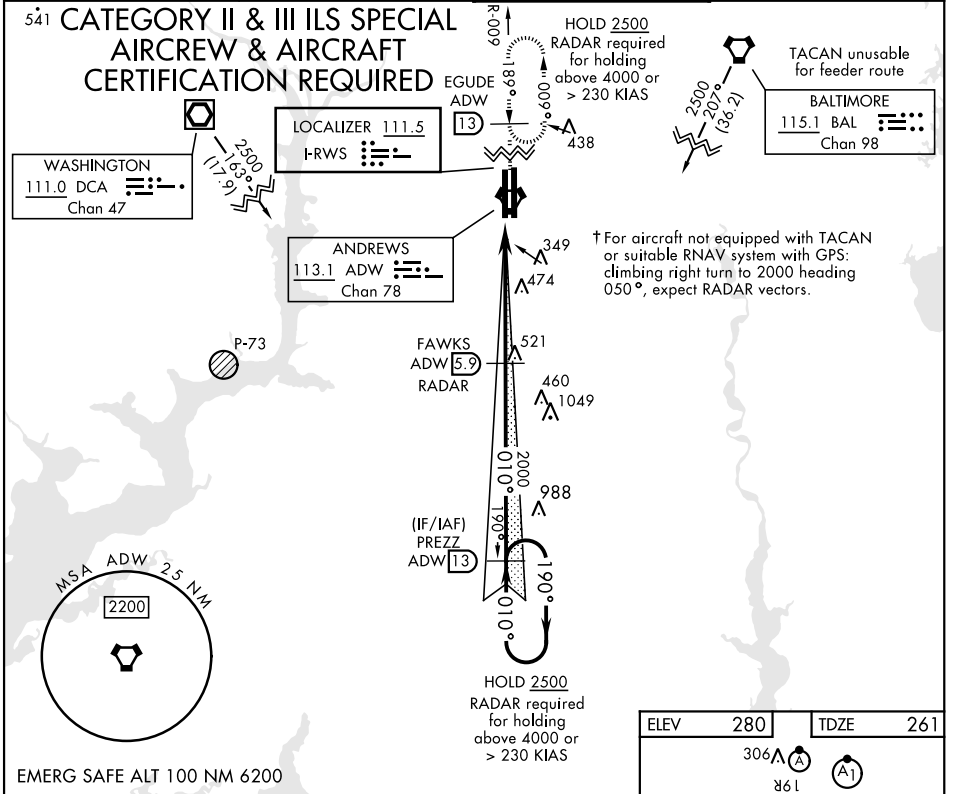
ILS RWY 1L (CAT II & III)

LOC I-RWS 111.5	APCH CRS 010°	Rwy Idg 10,310
		TDZE 261
		Arprt Elev 280

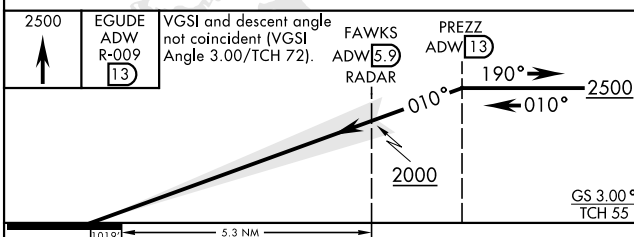
[USAF] JOINT BASE ANDREWS (ANDREWS AFB) (KADW)

RADAR or DME required		ALSF-2 	† MISSED APPROACH: Climbing to 2500, intercept ADW VORTAC R-009 to EGUDE and hold.
-----------------------	--	------------	--

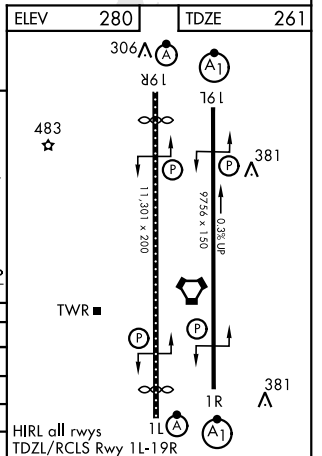
ATIS 133.675 251.05	POTOMAC APP CON 128.0 335.5	TOWER 118.4 349.0	GND CON 121.8 275.8
-------------------------------	---------------------------------------	-----------------------------	-------------------------------



EMERG SAFE ALT 100 NM 6200



CATEGORY	A	B	C	D	E
S-ILS 1L	CAT II		RA 108/12	100	DA 361
S-ILS 1L	CAT IIIa		RVR 07		
S-ILS 1L	CAT IIIb		RVR 06		
S-ILS 1L	CAT IIIc		NA		



NE-3, 11 JUN 2026 to 09 JUL 2026

NE-3, 11 JUN 2026 to 09 JUL 2026

CAMP SPRINGS, MARYLAND

38°49'N-76°52'W

JOINT BASE ANDREWS (ANDREWS AFB) (KADW)

Orig 06OCT22

ILS RWY 1L (CAT II & III)