

CAMP SPRINGS, MARYLAND

ILS or LOC RWY 19L

LOC I-GQZ 110.5	APCH CRS 190°	Rwy ldg TDZE 9756 Arprt Elev 280
---------------------------	-------------------------	---

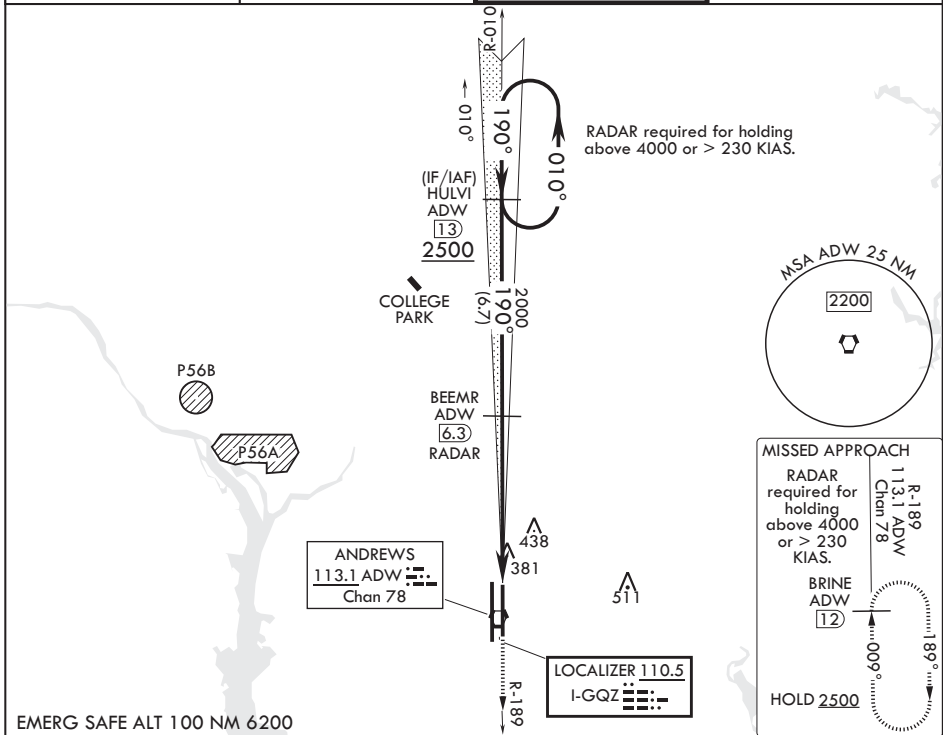
(USAF) JOINT BASE ANDREWS (ANDREWS AFB) (KADW)

RADAR or DME required at FAF

▼ * When ALS inop, increase RVR to 40, vis to 3/4.
** When ALS inop, increase CAT AB RVR to 55, vis to 1 mile; CAT CDE RVR to 60, vis to 1 1/8 mile.
*** Circling not authorized W of Rwy 1L-19R.

ALS-1
MISSED APPROACH: Climb to 2500 via ADW R-189 to BRINE/ADW 12 DME and hold.

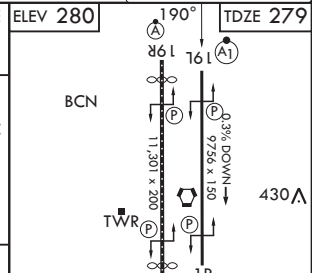
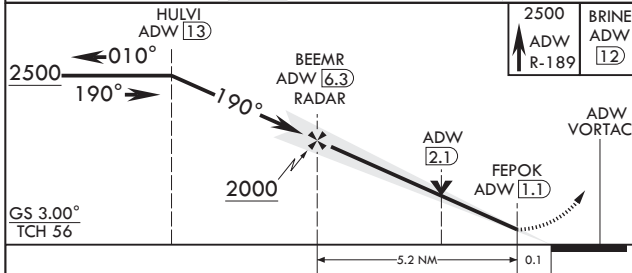
ATIS 133.675 251.05	POTOMAC APP CON 128.0 335.5	TOWER 118.4 349.0	GND CON 121.8 275.8
-------------------------------	---------------------------------------	-----------------------------	-------------------------------



NE-3, 11 JUN 2026 to 09 JUL 2026

NE-3, 11 JUN 2026 to 09 JUL 2026

EMERG SAFE ALT 100 NM 6200



CATEGORY	A	B	C	D	E
S-ILS 19L*	479/24		200	(200-1/2)	
S-LOC 19L**	680/24	401 (400-1/2)	680/40	401	(400-3/4)
CIRCLING***	780-1	500 (500-1)	780-1 1/2 500 (500-1 1/2)	840-2	560 (600-2)

HIRL all rwy's
TDZL/CL Rwy's 1L and 19R

FAF to MAP 5.2 NM					
Knots	60	90	120	150	180
Min:Sec	5:12	3:28	2:36	2:05	1:44

CAMP SPRINGS, MARYLAND

38°49'N - 76°52'W JOINT BASE ANDREWS (ANDREWS AFB) (KADW)

Amdt 1 18MAY23

ILS or LOC RWY 19L