

CAMP SPRINGS, MARYLAND

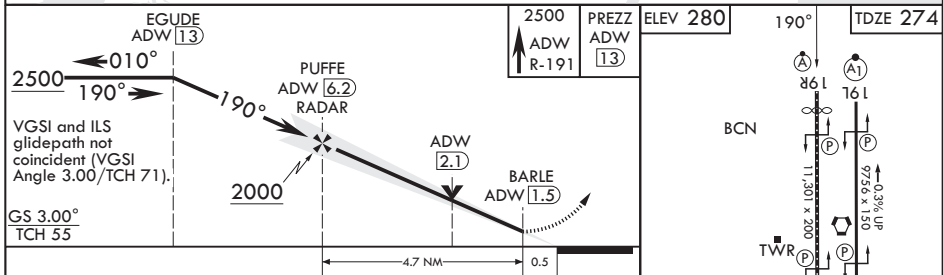
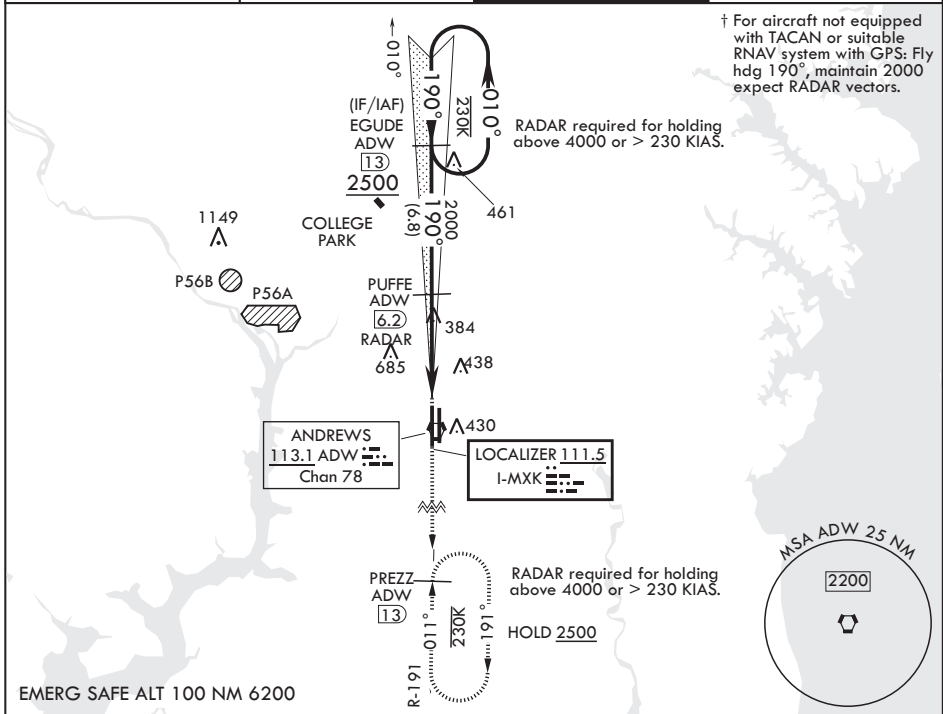
ILS or LOC RWY 19R

LOC I-MXK 111.5	APCH CRS 190°	Rwy Idg TDZE Arpt Elev	10,309 274 280
---------------------------	-------------------------	------------------------------	---

(USAF) JOINT BASE ANDREWS (ANDREWS AFB) (KADW)

RADAR or DME required		ALSIF-2 A	† MISSED APPROACH: Climb to 2500, intercept ADW VORTAC R-191 to PREZZ and hold.
▼ * When ALS inop, increase RVR to 40, vis to 3/4 mile. When TDZL/CL inop, increase RVR to 24. ** When ALS inop, increase CAT AB RVR to 55, vis to 1 mile, CAT CDE RVR to 60, vis to 1 1/8 miles. *** Circling NA West of Rwy 1L-19R.			

ATIS 133.675 251.05	POTOMAC APP CON 128.0 335.5	TOWER 118.4 349.0	GND CON 121.8 275.8
-------------------------------	---------------------------------------	-----------------------------	-------------------------------



	ELEV 280		190°		TDZE 274
	2500 ADW R-191		PREZZ ADW 13		
CATEGORY	A	B	C	D	E
S-ILS 19R*	474/18		200	(200-1/2)	
S-LOC 19R**	660/24	386 (400-1/2)	660/35	386	(400-3/8)
CIRCLING***	780-1	500 (500-1)	780-1 1/2	500 (500-1 1/2)	840-2 560 (600-2)
HIRL all rwys TDZL/CL Rwy 1L and 19R					
FAF to MAP 4.7 NM					
Knots 60 90 120 150 180					
Min:Sec 4:42 3:08 2:21 1:53 1:34					

CAMP SPRINGS, MARYLAND 38°49'N - 76°52'W JOINT BASE ANDREWS (ANDREWS AFB) (KADW)

ILS or LOC RWY 19R

Amdt 4 06OCT22

NE-3, 11 JUN 2026 to 09 JUL 2026

NE-3, 11 JUN 2026 to 09 JUL 2026