

25219

JEFSN TWO DEPARTURE (RNAV) (JEFSN2.JEFSN)

JOINT BASE ANDREWS (ANDREWS AFB) (KADW)
CAMP SPRINGS, MARYLAND

ATIS 133.675 251.05

RNAV1-GPS

[USAF]

TOP ALTITUDE:

RADAR required

3000

GND CON
121.8 275.8

ANDREWS TOWER

118.4 349.0

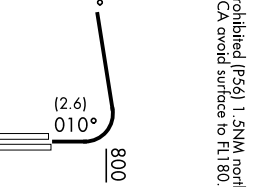
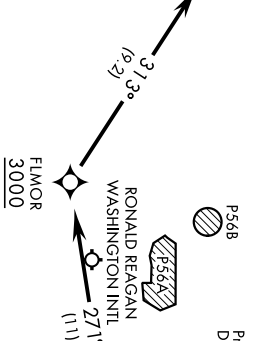
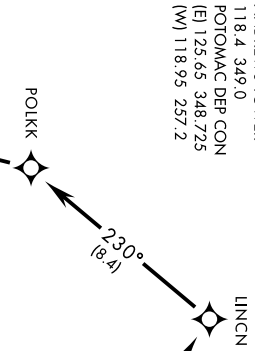
POTOMAC DEP CON
(E) 125.65 348.725

(W) 118.95 257.2



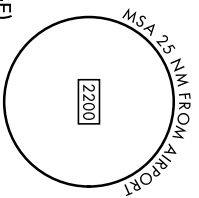
P568

Max 250 KIAS until JEFSN
Prohibited (P56) 1.5NM north of
DCA avoid surface to FL800.



TURBOJET ONLY

(Page 1 of 2)
(TRANSITIONS CONTINUED ON THE FOLLOWING PAGE)



DEPARTURE ROUTE DESCRIPTION

▶ TAKEOFF RWY 1L/R: Climb on heading 010° to 800, then climbing left turn to 3000 direct FLMOR. Then via depicted route to JEFNSN, hence...

TAKEOFF RWY 19L/R: Climb direct TYLER then via depicted route to JEFNSN, hence...

... on assigned transition. Maintain 3000, expect further clearance to filed alt within ten (10) minutes after departure.

- FLASK TRANSITION (JEFSN2.FLASK)
- GLANC TRANSITION (JEFSN2.GLANC)
- MAULS TRANSITION (JEFSN2.MAULS)
- MELTN TRANSITION (JEFSN2.MELTN)
- RRSIN TRANSITION (JEFSN2.RRSIN)

JEFSN TWO DEPARTURE (RNAV) (JEFSN2.JEFSN)

Orig 31OCT24

CAMP SPRINGS, MARYLAND
JOINT BASE ANDREWS (ANDREWS AFB) (KADW)

25219

JEFSN TWO DEPARTURE (RNAV) (JEFSN2.JEFSN)

JOINT BASE ANDREWS (ANDREWS AFB) (KADW)
CAMP SPRINGS, MARYLAND

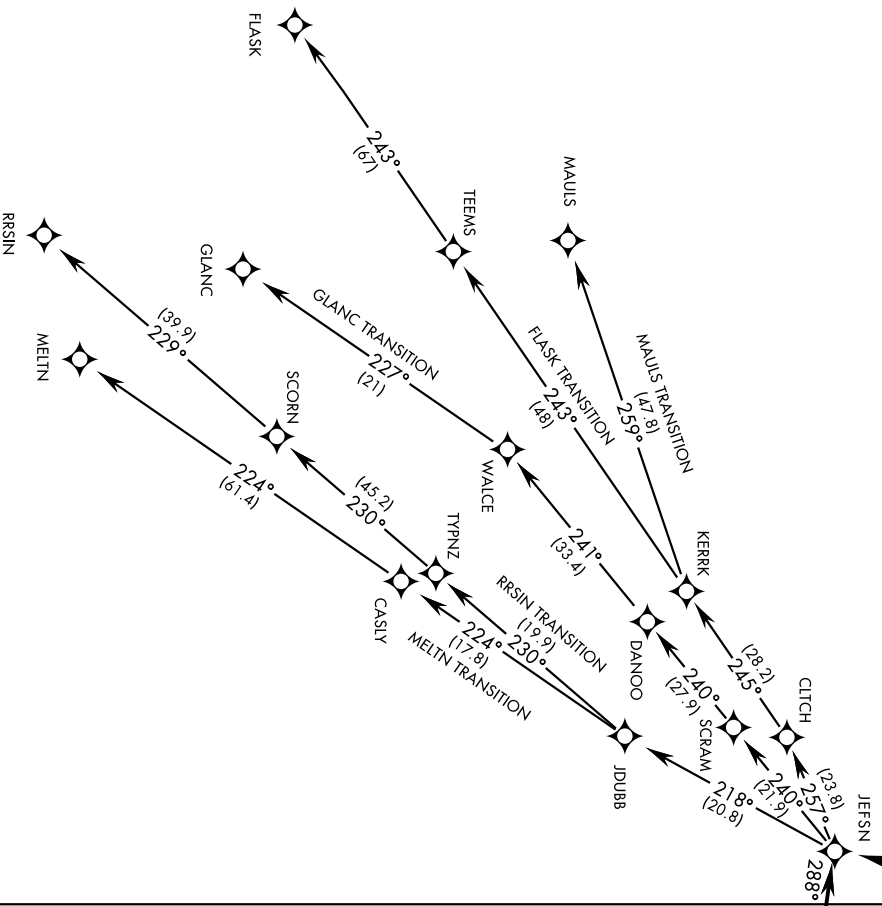
TOP ALTITUDE:

3000

RNAV-GPS

RADAR required

[USAF]



NE-3, 11 JUN 2026 to 09 JUL 2026

(Page 2 of 2)

NOTE: Chart not to scale

TURBOJET ONLY

JEFSN TWO DEPARTURE (RNAV) (JEFSN2.JEFSN)

Orig 31OCT24

CAMP SPRINGS, MARYLAND
JOINT BASE ANDREWS (ANDREWS AFB) (KADW)