

CAMP SPRINGS, MARYLAND

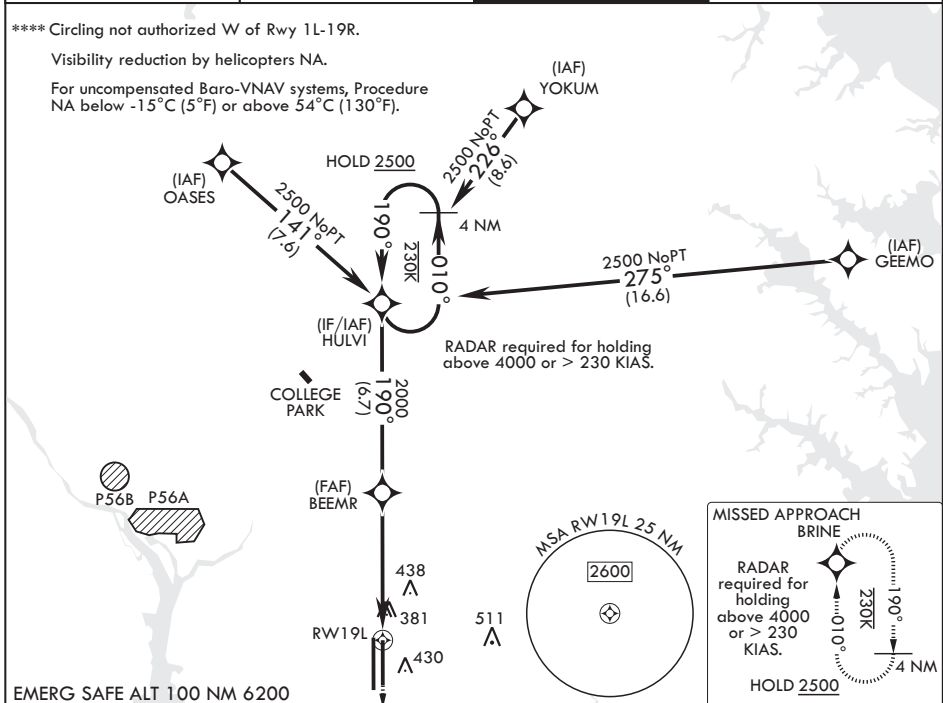
RNAV (GPS) RWY 19L

(USAF) JOINT BASE ANDREWS (ANDREWS AFB) (KADW)

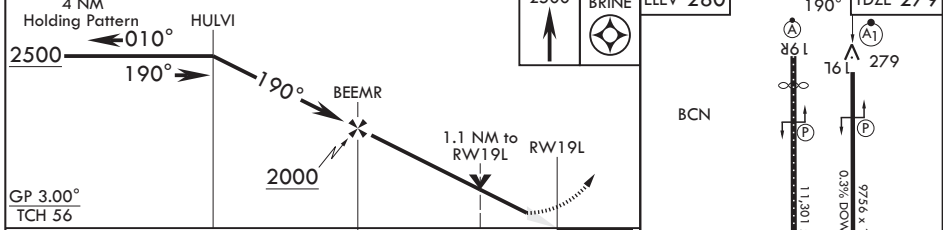
WAAS CH 52203 W19A	APCH CRS 190°	Rwy ldg TDZE Arprt Elev	9756 279 280
--------------------------	------------------	-------------------------------	--------------------

DME/DME RNP-0.3 NA	ALSIF-1	MISSED APPROACH: Climb to 2500 direct BRINE and hold.
<p>▼ * When ALS inop, increase RVR to 40, vis to 3/4 mile.</p> <p>** When ALS inop, increase RVR to 60, vis to 1 1/8 miles.</p> <p>*** When ALS inop, increase CAT AB RVR to 55, vis to 1 mile; CAT CDE RVR to 60, vis to 1 1/8 miles.</p>	(A1)	

ATIS 133.675 251.05	POTOMAC APP CON 128.0 335.5	TOWER 118.4 349.0	GND CON 121.8 275.8
------------------------	--------------------------------	----------------------	------------------------



EMERG SAFE ALT 100 NM 6200



CATEGORY	A	B	C	D	E
LPV DA*	479/24		200	(200-1/2)	
LNAV/VNAV DA**	680/40		401	(400-3/4)	
LNAV MDA***	680/24	401 (400-1/2)	680/40	401	(400-3/4)
CIRCLING****	780-1	500 (500-1)	780-1 1/2 500 (500-1 1/2)	840-2	560 (600-2)

HIRL all rwys TDZL/CL Rws 11L and 19R

CAMP SPRINGS, MARYLAND 38°49'N - 76°52'W JOINT BASE ANDREWS (ANDREWS AFB) (KADW)

Amdt 1 18MAY23

RNAV (GPS) RWY 19L

NE-3, 11 JUN 2026 to 09 JUL 2026

NE-3, 11 JUN 2026 to 09 JUL 2026