

CAMP SPRINGS, MARYLAND

# RNAV (GPS) RWY 1R

(USAF) JOINT BASE ANDREWS (ANDREWS AFB) (KADW)

WAAS CH 52206 W01B	APCH CRS 010°	Rwy ldg TDZE 265 Arprt Elev 280
--------------------------	------------------	---------------------------------------

DME/DME RNP-0.3 NA

\* When ALS inop increase RVR to 40, vis to 3/4 mile.  
 \*\* When ALS inop, increase RVR to 60, vis to 1 1/8 miles.  
 \*\*\* When ALS inop, increase CAT AB RVR to 55, vis to 1 mile;  
 CAT CDE RVR to 60, vis to 1 1/8 miles.

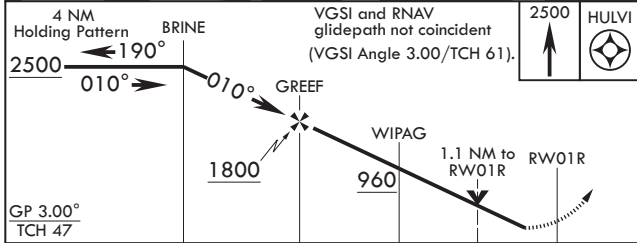
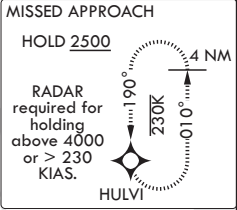
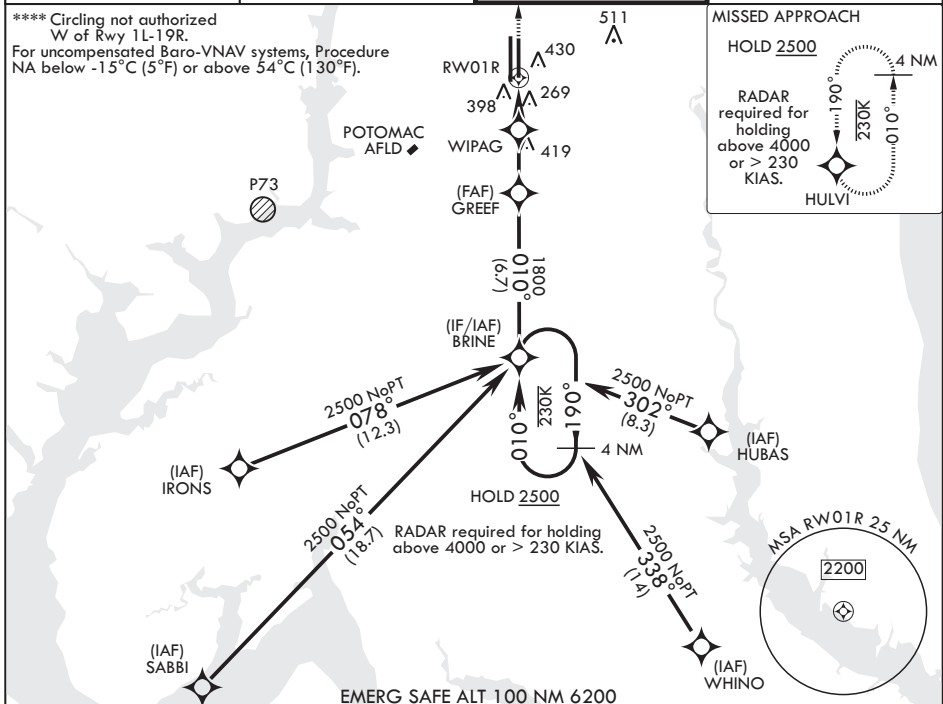
ALSF-1



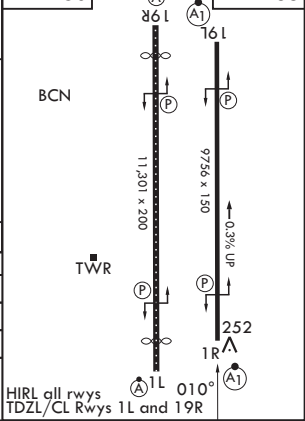
MISSED APPROACH: Climb to 2500 direct HULVI and hold.

ATIS 133.675 251.05	POTOMAC APP CON 128.0 335.5	TOWER 118.4 349.0	GND CON 121.8 275.8
------------------------	--------------------------------	----------------------	------------------------

\*\*\*\* Circling not authorized  
 W of Rwy 1L-19R.  
 For uncompensated Baro-VNAV systems, Procedure  
 NA below -15°C (5°F) or above 54°C (130°F).



ELEV 280



CATEGORY	A	B	C	D	E
LPV DA*	465/24		200	(200-½)	
LNAV/VNAV DA**	660/35		395	(400-%)	
LNAV MDA***	660/24	395 (400-½)	660/35	395	(400-%)
CIRCLING****	780-1	500 (500-1)	780-1½ 500 (500-1½)	840-2	560 (600-2)

HIRL all rwys TDZL/CL Rwys 1L and 19R

CAMP SPRINGS, MARYLAND

38°49'N - 76°52'W JOINT BASE ANDREWS (ANDREWS AFB) (KADW)

Amdt 3 18MAY23

# RNAV (GPS) RWY 1R

NE-3, 11 JUN 2026 to 09 JUL 2026

NE-3, 11 JUN 2026 to 09 JUL 2026