

CAMP SPRINGS, MARYLAND

# RNAV (RNP) Y RWY 1L

(USAF) JOINT BASE ANDREWS (ANDREWS AFB) (KADW)

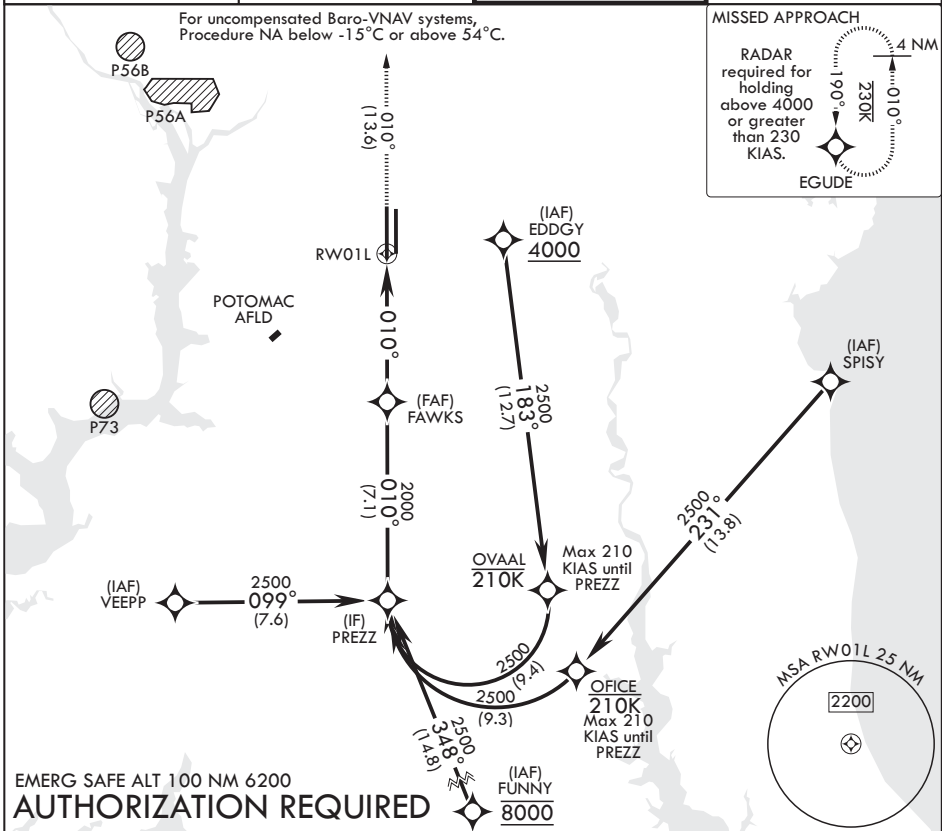
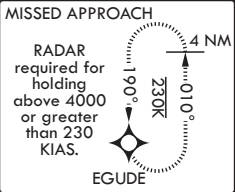
APCH CRS	Rwy Idg	10,310
010°	TDZE	261
	Arprt Elev	280

RNP AR APCH. From SPISY, EDDGY: RF.  
 \* When ALS inop, increase RVR to 55, vis to 1 mile.  
 \*\* When ALS inop, increase vis to 1 3/8 miles.

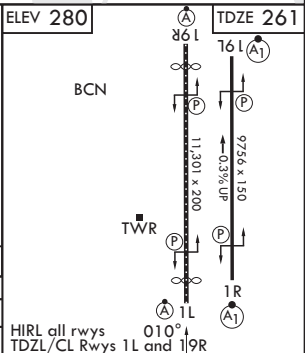
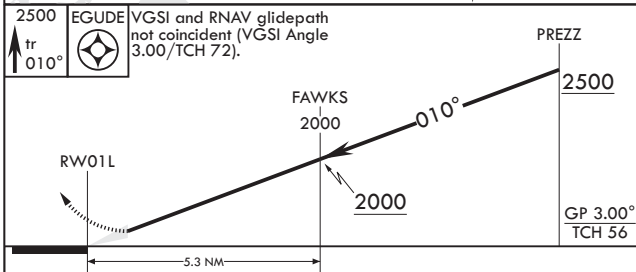
ALSF-2 MISSED APPROACH: Climb to 2500 on track 010° to EGUDE and hold.

ATIS 133.675 251.05	POTOMAC APP CON 128.0 335.5	TOWER 118.4 349.0	GND CON 121.8 275.8
------------------------	--------------------------------	----------------------	------------------------

For uncompensated Baro-VNAV systems, Procedure NA below -15°C or above 54°C.



EMERG SAFE ALT 100 NM 6200  
**AUTHORIZATION REQUIRED**



CATEGORY	A	B	C	D
RNP 0.15 DA*	641/35	380	(400-5%)	
RNP 0.30 DA**	717/45	456	(500-7%)	

HIRL all rwwys 010°  
 TDZL/CL Rwwys 1L and 19R

CAMP SPRINGS, MARYLAND

38°49'N - 76°52'W JOINT BASE ANDREWS (ANDREWS AFB) (KADW)

Amdt 2 18MAY23

# RNAV (RNP) Y RWY 1L

NE-3, 11 JUN 2026 to 09 JUL 2026

NE-3, 11 JUN 2026 to 09 JUL 2026