

CAMP SPRINGS, MARYLAND

TACAN RWY 19L

VORTAC ADW 113.1 Chan 78	APCH CRS 195°	Rwy Idg TDZE Arprt Elev	9756 279 280
--------------------------------	------------------	----------------------------	--------------------

(USAF) JOINT BASE ANDREWS (ANDREWS AFB) (KADW)

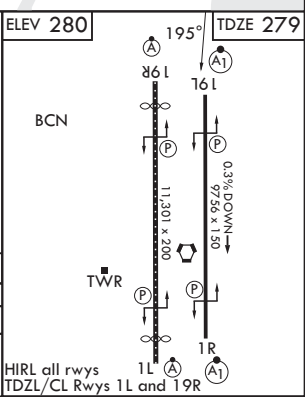
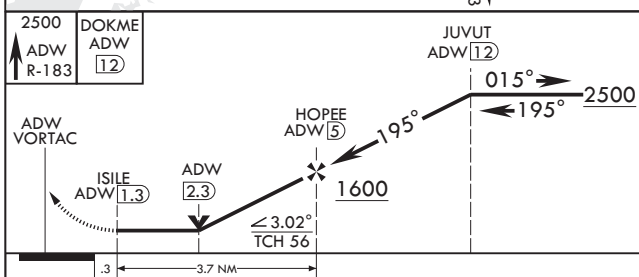
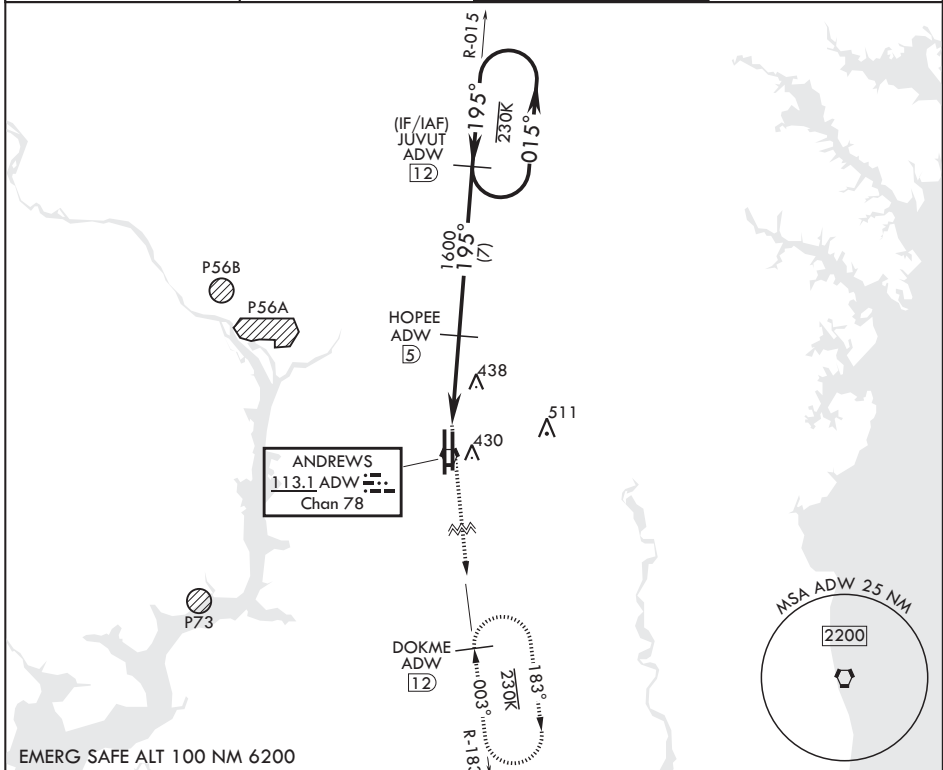
RADAR required

⚠ * When ALS inop, increase CAT AB RVR to 55, vis to 1 mile, CAT CDE vis to 1 3/8 miles.
** Circling not authorized W of Rwy 1L-19R.

ALSF-1

MISSED APPROACH: Climbing to 2500 via ADW VORTAC R-183 to DOKME and hold.

ATIS 133.675 251.05	POTOMAC APP CON 128.0 335.5	TOWER 118.4 349.0	GND CON 121.8 275.8
------------------------	--------------------------------	----------------------	------------------------



CATEGORY	A	B	C	D	E
S-19L*	740/24	461 (500-½)	740/50	461	(500-1)
CIRCLING**	780-1	501 (600-1)	780-1½ 501 (600-1½)	840-2	561 (600-2)

CAMP SPRINGS, MARYLAND 38°49'N - 76°52'W JOINT BASE ANDREWS (ANDREWS AFB) (KADW)

Amdt 3 18MAY23

TACAN RWY 19L

NE-3, 11 JUN 2026 to 09 JUL 2026

NE-3, 11 JUN 2026 to 09 JUL 2026