

CAMP SPRINGS, MARYLAND

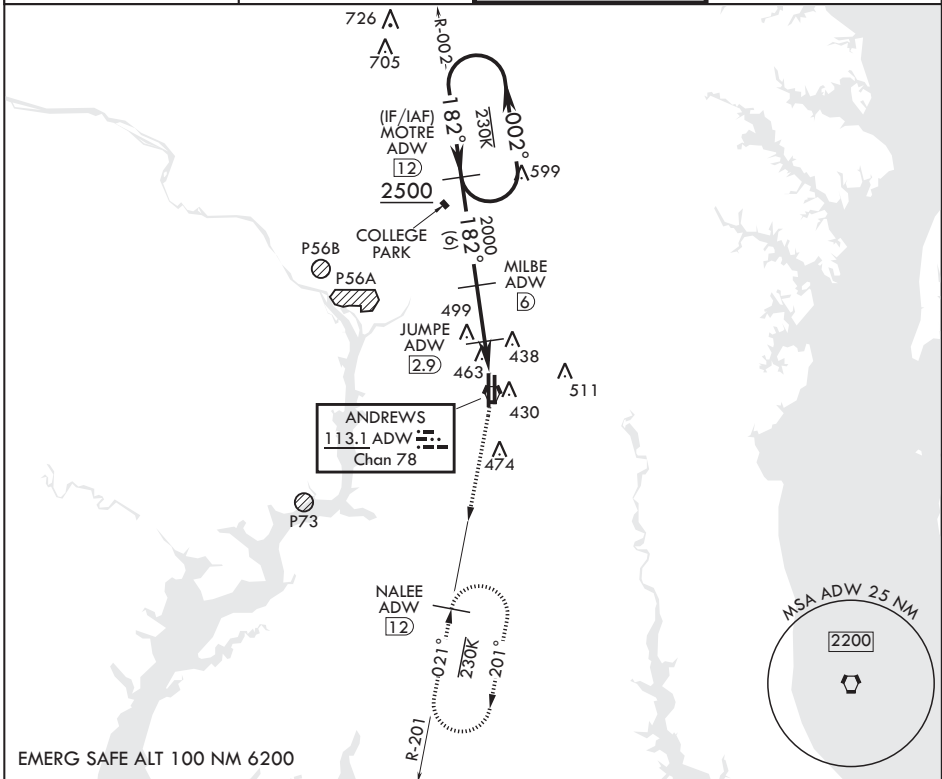
TACAN RWY 19R

VORTAC ADW 113.1 Chan 78	APCH CRS 182°	Rwy ldg TDZE Arpt Elev 10,309 280
--------------------------------	------------------	--

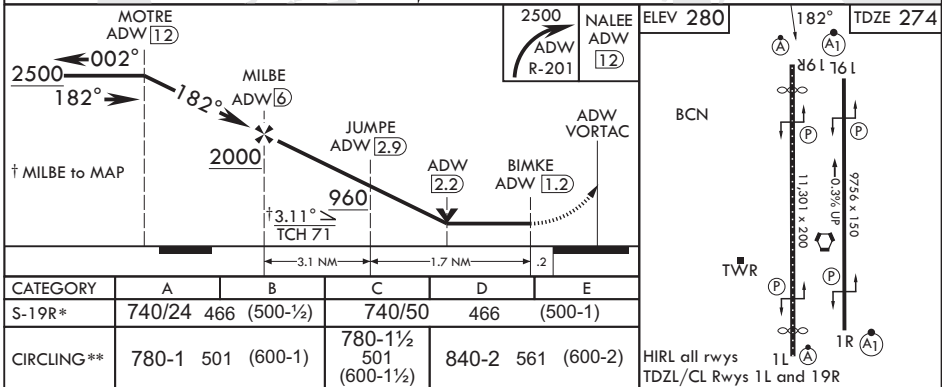
(USAF) JOINT BASE ANDREWS (ANDREWS AFB) (KADW)

RADAR required	ALSF-2	MISSED APPROACH: Climbing to 2500, intercept ADW VORTAC R-201 to NALEE and hold.
<p>▼ * When ALS inop, increase CAT AB RVR to 55, vis to 1 mile, CAT CDE vis to 1 3/8 miles. ** Circling not authorized W of Rwy 1L-19R.</p>		

ATIS 133.675 251.05	POTOMAC APP CON 128.0 335.5	TOWER 118.4 349.0	GND CON 121.8 275.8
------------------------	--------------------------------	----------------------	------------------------



EMERG SAFE ALT 100 NM 6200



CATEGORY	A	B	C	D	E
S-19R*	740/24 466 (500-½)		740/50	466	(500-1)
CIRCLING**	780-1 501 (600-1)		780-1½ 501 (600-1½)	840-2 561 (600-2)	

ELEV 280	TDZE 274
<p>HIRL all rwys TDZL/CL Rwy 1L and 19R</p>	

NE-3, 11 JUN 2026 to 09 JUL 2026

NE-3, 11 JUN 2026 to 09 JUL 2026

CAMP SPRINGS, MARYLAND
Amdt 2 18MAY23

38°49'N - 76°52'W JOINT BASE ANDREWS (ANDREWS AFB) (KADW)

TACAN RWY 19R