

CAMP SPRINGS, MARYLAND

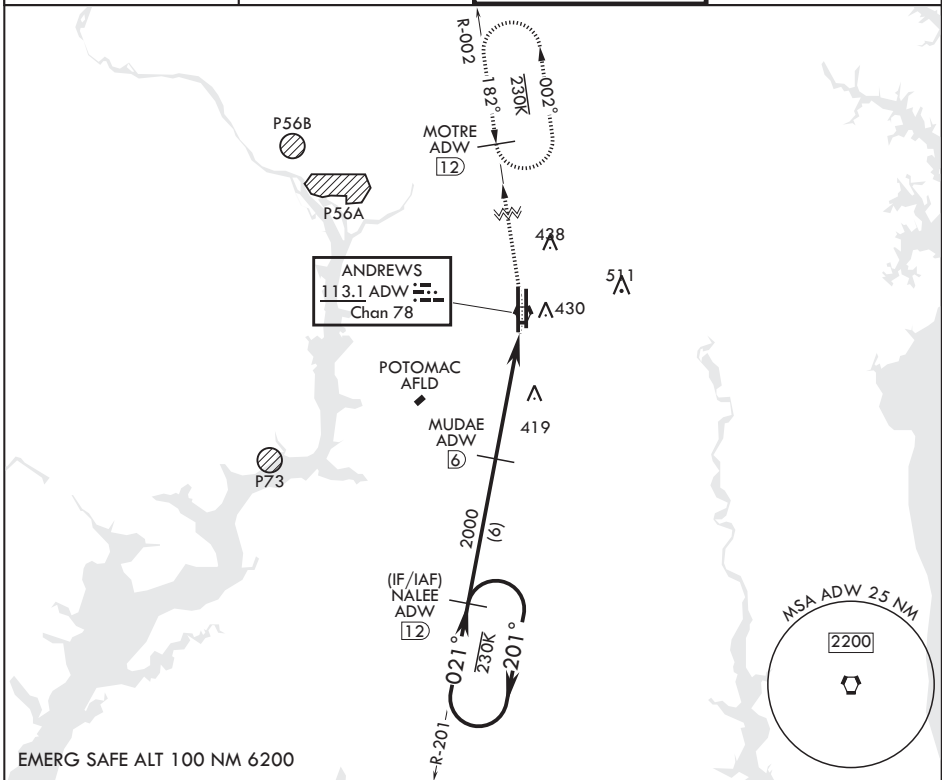
TACAN RWY 1L

VORTAC ADW 113.1 Chan 78	APCH CRS 021°	Rwy ldg TDZE Arprt Elev	10,310 261 280
--------------------------------	------------------	----------------------------	----------------------

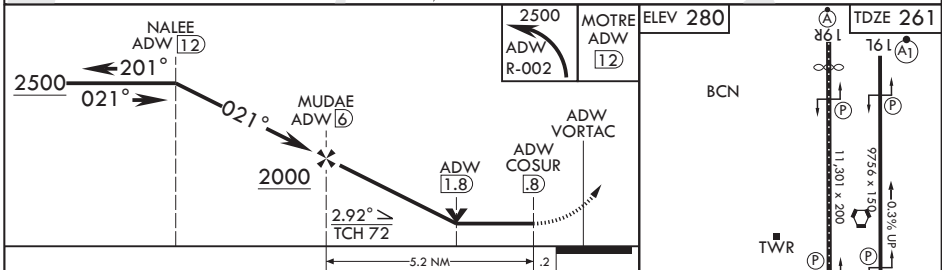
(USAF) JOINT BASE ANDREWS (ANDREWS AFB) (KADW)

RADAR required	ALSIF-2	MISSED APPROACH: Climb to 2500 via ADW VORTAC R-002 to MOTRE/ADW 12 DME and hold.
<p>▼ * When ALS inop, increase CAT AB RVR to 55, vis to 1 mile, CAT CDE vis to 1 3/8 miles. ** Circling not authorized W of Rwy 1L-19R.</p>		

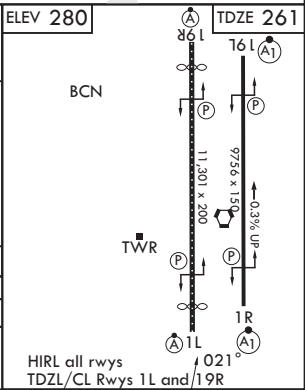
ATIS 133.675 251.05	POTOMAC APP CON 128.0 335.5	TOWER 118.4 349.0	GND CON 121.8 275.8
------------------------	--------------------------------	----------------------	------------------------



EMERG SAFE ALT 100 NM 6200



CATEGORY	A	B	C	D	E
S-1L*	720/24 459 (500-½)		720/45	459	(500-¾)
CIRCLING**	780-1 501 (600-1)		780-1½ 501 (600-1½)	840-2 561 (600-2)	



CAMP SPRINGS, MARYLAND

38°49'N - 76°52'W JOINT BASE ANDREWS (ANDREWS AFB) (KADW)

Amdt 2 18MAY23

TACAN RWY 1L

NE-3, 11 JUN 2026 to 09 JUL 2026

NE-3, 11 JUN 2026 to 09 JUL 2026

HIRL all rwys
TDZL/CL Rwy's 1L and 19R