

CAMP SPRINGS, MARYLAND

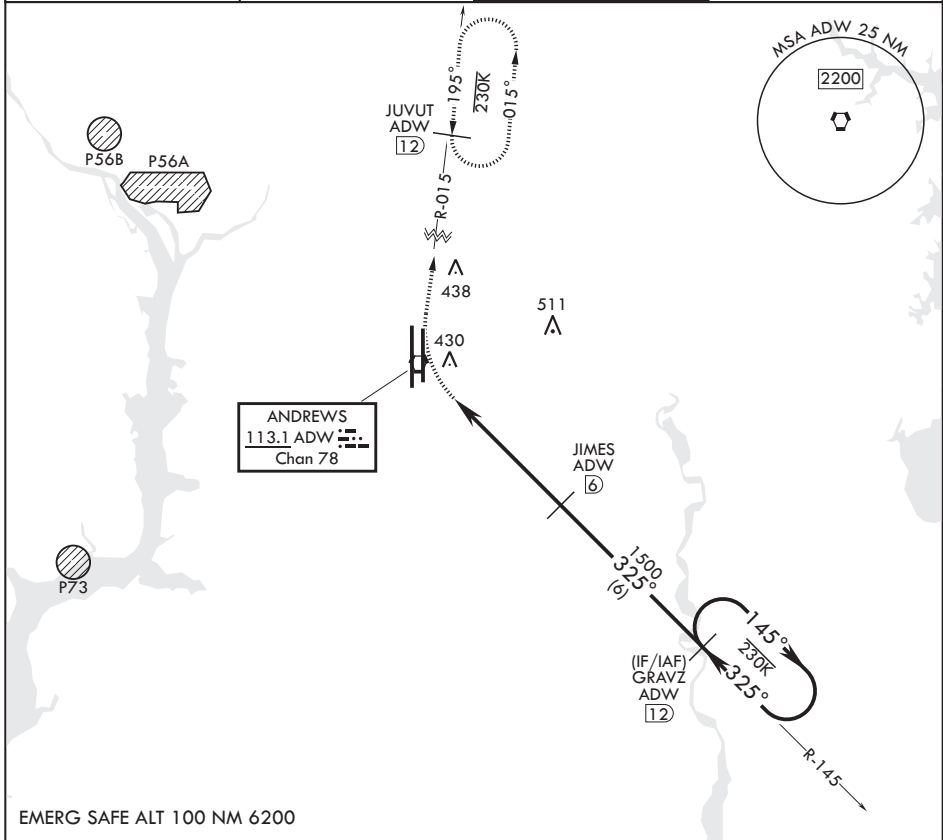
TACAN-B

VORTAC ADW 113.1 Chan 78	APCH CRS 325°	Rwy ldg TDZE Arprt Elev	N/A N/A 280
--------------------------------	------------------	-------------------------------	-------------------

(USAF) JOINT BASE ANDREWS (ANDREWS AFB) (KADW)

RADAR required
 MISSED APPROACH: Climbing right turn to 2500 via ADW R-015 to JUVUT and hold.

ATIS 133.675 251.05	POTOMAC APP CON 128.0 335.5	TOWER 118.4 349.0	GND CON 121.8 275.8
------------------------	--------------------------------	----------------------	------------------------



EMERG SAFE ALT 100 NM 6200																
2500 ADW R-015	JUVUT ADW 12	GRAVZ ADW 12	ELEV 280													
ADW VORTAC	JOLOS ADW 1.5	JAMES ADW 6	TWR													
<table border="1"> <thead> <tr> <th>CATEGORY</th> <th>A</th> <th>B</th> <th>C</th> <th>D</th> <th>E</th> </tr> </thead> <tbody> <tr> <td>CIRCLING*</td> <td>780-1¼ 500 (500-1¼)</td> <td></td> <td>780-1½ 500 (500-1½)</td> <td>840-2 560 (600-2)</td> <td></td> </tr> </tbody> </table>					CATEGORY	A	B	C	D	E	CIRCLING*	780-1¼ 500 (500-1¼)		780-1½ 500 (500-1½)	840-2 560 (600-2)	
CATEGORY	A	B	C	D	E											
CIRCLING*	780-1¼ 500 (500-1¼)		780-1½ 500 (500-1½)	840-2 560 (600-2)												
HIRL all rwys TDZL/CL Rwys 1L and 19R																

CAMP SPRINGS, MARYLAND

38°49'N - 76°52'W JOINT BASE ANDREWS (ANDREWS AFB) (KADW)

Amdt 4 18MAY23

TACAN-B

NE-3, 11 JUN 2026 to 09 JUL 2026

NE-3, 11 JUN 2026 to 09 JUL 2026