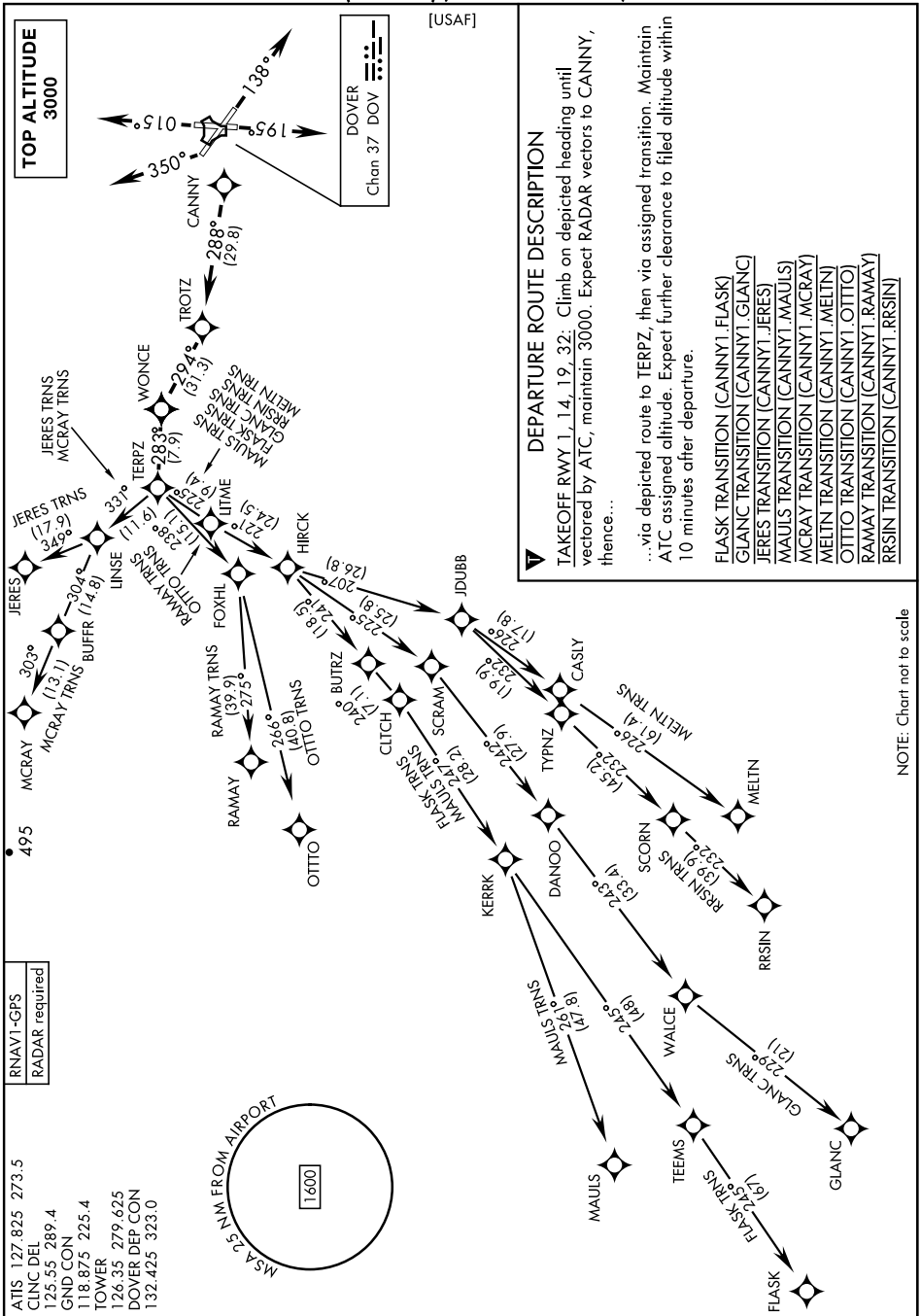


CANNY ONE DEPARTURE (RNAV)(CANNY1.CNY)

[USAF]

NE-3, 11 JUN 2026 to 09 JUL 2026



DEPARTURE ROUTE DESCRIPTION

TAKEOFF RWY 1, 14, 19, 32: Climb on depicted heading until vectored by ATC, maintain 3000. Expect RADAR vectors to CANNY, thence...

...via depicted route to TERPZ, then via assigned transition. Maintain ATC assigned altitude. Expect further clearance to filed altitude within 10 minutes after departure.

FLASK TRANSITION (CANNY1.FLASK)
 GLANC TRANSITION (CANNY1.GLANC)
 JERES TRANSITION (CANNY1.JERES)
 MAJUS TRANSITION (CANNY1.MAJUS)
 MCRAY TRANSITION (CANNY1.MCRAY)
 MELTN TRANSITION (CANNY1.MELTN)
 OTTO TRANSITION (CANNY1.OTTO)
 RAMAY TRANSITION (CANNY1.RAMAY)
 RRSIN TRANSITION (CANNY1.RRSIN)

NOTE: Chart not to scale

NE-3, 11 JUN 2026 to 09 JUL 2026

CANNY ONE DEPARTURE (RNAV)(CANNY1.CNY)

Amtd 3 11JUL24