

DOVER, DELAWARE

RNAV (GPS) RWY 32

WAAS CH 91360 W32A	APCH CRS 318°	Rwy ldg 12,903	TDZE 26
		Arpt Elev 29	

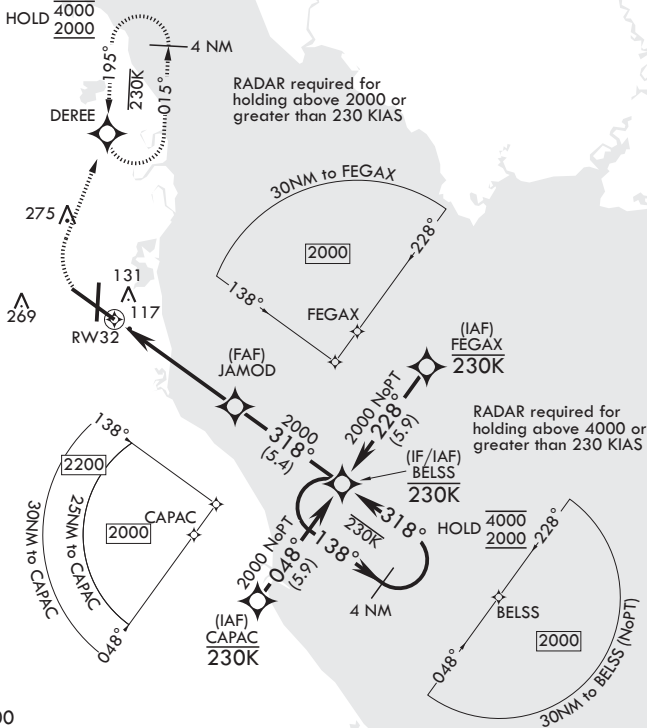
(USAF)

DOVER AFB (KDOV)

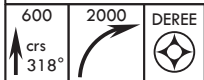
RNP APCH-GPS MISSED APPROACH: (Do not exceed 230 KIAS) Climb to 600 then climbing right turn to 2000 direct DEREÉ and hold.

ATIS 127.825 273.5	APP CON 132.425 257.875	TOWER 126.35 279.625	GND CON 118.875 225.4
-----------------------	----------------------------	-------------------------	--------------------------

For uncompensated Baro-VNAV systems, procedure NA below -15°C (5°F) or above 54°C (130°F).

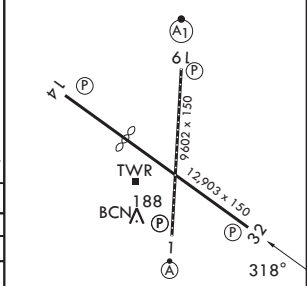
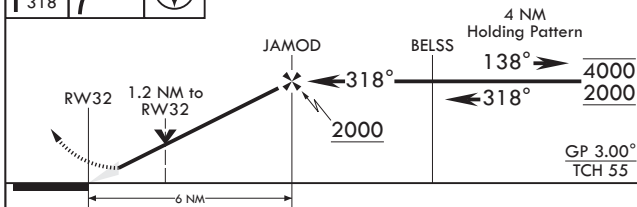


EMERG SAFE ALT 100 NM 4300



VGSI and RNAV glidepath not coincident (VGSI Angle 2.93/TCH 69).

ELEV 29 See Supp for declared dist. TDZE 26



CATEGORY	A	B	C	D
LPV DA	226-¾	200	(200-¾)	
LNAV/VNAV DA	277-¾ 251 (300-¾)	316-7/8 290 (300-7/8)	326-7/8 300 (300-7/8)	
LNAV MDA	460-1 434 (500-1)	460-1¼ 434 (500-1¼)	620-2 591 (600-2)	
CIRCLING	540-1 511 (600-1)	620-1½ 591 (600-1½)	620-2 591 (600-2)	

HIRL all rwys
REIL Rwy 32
TDZL/CL Rwy 1

DOVER, DELAWARE
Amdt 6 26DEC24

39°08'N - 75°28'W

DOVER AFB (KDOV)

RNAV (GPS) RWY 32

NE-3, 11 JUN 2026 to 09 JUL 2026

NE-3, 11 JUN 2026 to 09 JUL 2026