

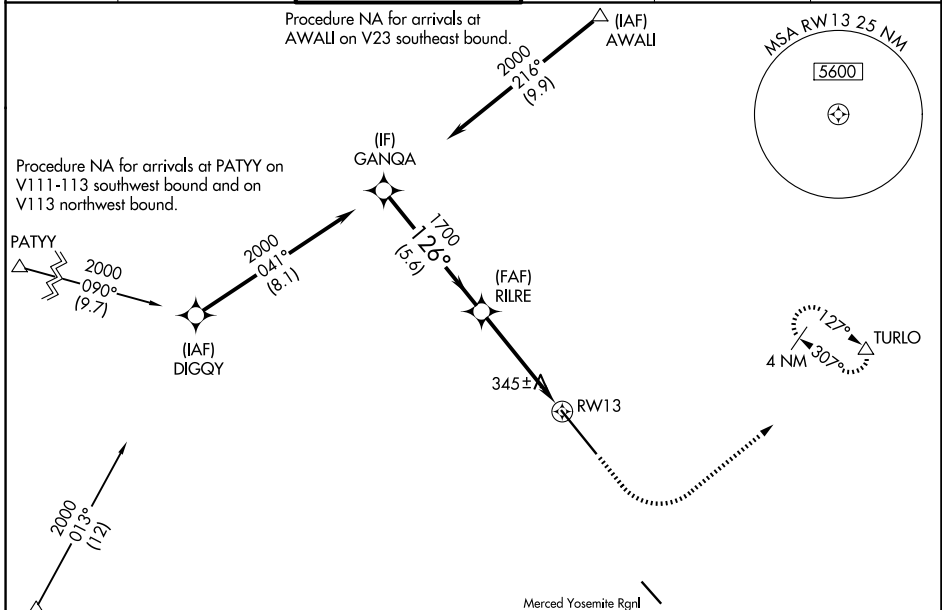
WAAS CH 50211 W13A	APP CRS 126°	Rwy Ldg 11802 TDZE 190 Apt Elev 190
--	------------------------	--

RNAV (GPS) RWY 13

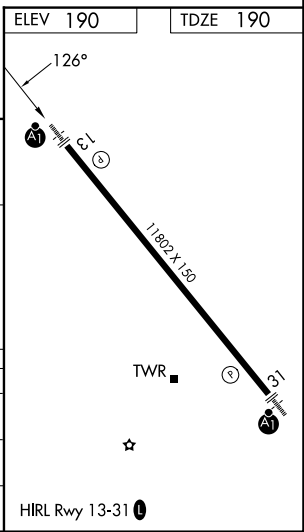
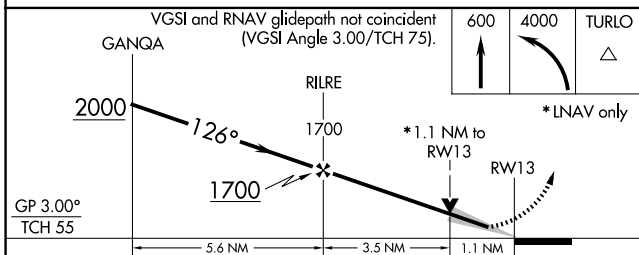
CASTLE (MER)

RNP APCH.	ALSF-1	MISSED APPROACH: Climb to 600 then climbing left turn to 4000 direct TURLO and hold, continue climb-in-hold to 4000.
<p>▼ For uncompensated Baro-VNAV systems, LNAV/VNAV NA below -1.5°C or above 54°C. For inoperative ALS, increase LNAV/VNAV all Cats visibility to 1½ SM, increase LNAV Cats A/B visibility to 1 SM, and increase LNAV Cat C/D visibility to 1½ SM.</p>		

ATIS 124,475	NORCAL APP CON 120,95 269,45	CASTLE TOWER ★ 118,175 (CTAF) 235,775	GND CON 133,575	UNICOM 122,95	123.0
------------------------	--	---	---------------------------	-------------------------	--------------



ELEV 190	TDZE 190
----------	----------



CATEGORY	A	B	C	D
LPV DA		390-¾	200 (200-¾)	
LNAV/VNAV DA		655-1	465 (500-1)	
LNAV MDA		600-¾	410 (500-¾)	

SW-2, 11 JUN 2026 to 09 JUL 2026

SW-2, 11 JUN 2026 to 09 JUL 2026