

LOC/DME I-TQW 111.3 Chan 50	APP CRS 325°	Rwy Ldg 7466 TDZE 1124 Apt Elev 1203
---	------------------------	--

ILS or LOC RWY 32

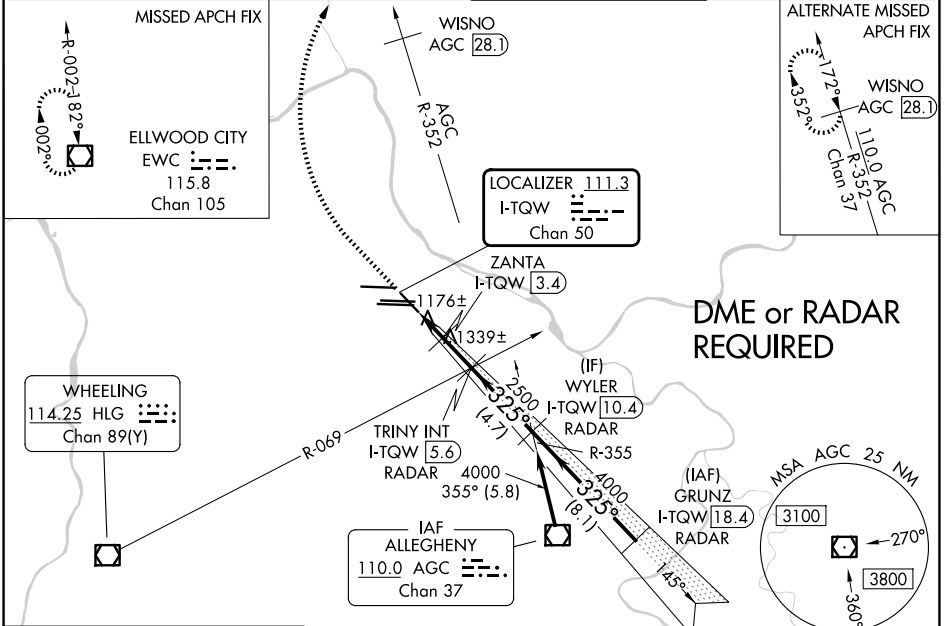
PITTSBURGH INTL (PIT)

⚠ DME or RADAR required. Inop table does not apply to S-ILS 32. For inop ALS, increase S-LOC 32 Cat E visibility to 1¼ SM and ZANTA fix minimums S-LOC 32 Cat E visibility to RVR 6000.

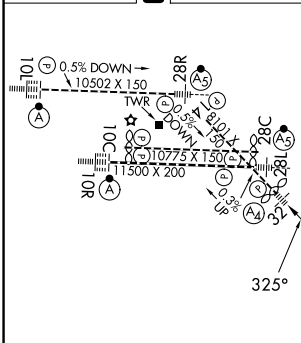
MALS

MISSED APPROACH: Climb to 1800 then climbing right turn to 4000 direct EWC VOR/DME and hold.

D-ATIS 127.25	PITTSBURGH APP CON 123.95 360.8	PITTSBURGH TOWER 128.3 291.7	GND CON SOUTH 121.9 348.6 NORTH 127.8 348.6
-------------------------	---	--	---



ELEV 1203	D	TDZE 1124
-----------	----------	-----------



1800	4000	EWC	VGSI and ILS glidepath not coincident (VGSI Angle 3.00/TCH 72).				
*LOC only.			TRINNY INT I-TQW 5.6 RADAR	WYLER I-TQW 10.4 RADAR	GRUNZ I-TQW 18.4		
I-TQW 1.4	*I-TQW 2.4	ZANTA I-TQW 3.4	2500	325°	4000	6000	GS 3.00° TCH 37
-1 NM			-1 NM	-2.2 NM	-4.7 NM	-8.1 NM	

REIL Rwy 10C
HIRL all rwys
TDZL/RCLS Rwy 10L, 10R, 28L, 28R, 28C, and 32

FAF to MAP 4.2 NM					
Knots	60	90	120	150	180
Min:Sec	4:12	2:48	2:06	1:41	1:24

CATEGORY	A	B	C	D	E
S-ILS 32	1324/40		200 (200-¾)		
S-LOC 32	1760/40	636 (600-¾)	1760-1½	636 (600-1½)	
CIRCLING	1760-1	557 (600-1)	1880-2 677 (700-2)	1880-2¼ 677 (700-2¼)	1880-2½ 677 (700-2½)
ZANTA FIX MINIMUMS (DME REQUIRED)					
S-LOC 32	1520/40	396 (400-¾)	1520/45	396 (400-¾)	
CIRCLING	1700-1	497 (500-1)	1880-2 677 (700-2)	1880-2¼ 677 (700-2¼)	1880-2½ 677 (700-2½)

NE-4, 11 JUN 2026 to 09 JUL 2026

NE-4, 11 JUN 2026 to 09 JUL 2026